

Lampiran 1 : Jawaban Try Out Non Responden (1)

No Resp.	Loyalitas Afiliasi Politik							
	X1.P1	X1.P2	X1.P3	X1.P4	X1.P5	X1.P6	X1.P7	X1.P8
1	2	2	3	3	3	3	1	2
2	2	2	2	2	3	4	1	1
3	1	1	2	2	3	4	3	1
4	2	2	2	2	2	3	2	2
5	4	4	4	4	4	4	2	3
6	3	3	2	2	3	3	3	3
7	4	4	4	4	4	4	3	4
8	4	4	4	4	4	4	4	4
9	2	2	3	3	3	4	3	4
10	3	3	4	4	4	4	3	3
11	2	2	3	3	3	3	2	3
12	4	4	4	4	4	4	4	4
13	4	4	3	3	3	3	3	3
14	3	3	3	3	3	3	3	3
15	3	3	3	3	3	3	2	3
16	4	4	4	4	4	4	4	4
17	4	4	4	4	4	4	4	3
18	4	4	4	4	3	2	2	2
19	4	4	3	3	3	4	3	2
20	4	4	3	3	4	4	4	4
21	3	3	3	3	4	3	2	2
22	4	4	4	4	4	4	3	3
23	3	3	3	3	3	3	3	3
24	4	4	3	3	3	3	2	2
25	4	4	4	4	4	4	3	3
26	3	3	3	3	3	3	2	1
27	4	4	3	2	1	3	2	3
28	4	4	2	3	3	3	4	2
29	2	2	3	1	3	2	1	1
30	3	3	1	3	1	3	4	1

Lampiran 2 : Jawaban Try Out Non Responden (2)

Intensitas Konsumsi Media					
X2.P1	X2.P2	X2.P3	X2.P4	X2.P5	X2.P6
2	3	2	2	1	1
1	1	1	1	2	2
1	1	1	2	1	1
2	2	2	2	2	2
4	4	4	4	3	2
3	3	3	3	3	3
3	3	3	4	2	2
4	3	3	3	2	2
4	3	1	1	4	1
3	3	3	3	3	3
2	2	2	2	2	3
4	4	4	4	4	4
4	4	4	4	3	3
3	3	3	3	3	3
3	3	3	3	1	1
4	3	3	4	2	3
4	4	4	4	3	3
2	2	2	1	1	1
4	4	3	2	2	1
4	3	3	4	4	4
3	2	2	2	1	1
4	4	3	3	2	2
3	3	3	3	3	3
3	2	3	3	3	3
2	2	1	1	2	2
2	2	2	2	2	2
2	1	2	3	3	3
4	3	2	1	2	4
3	4	3	4	1	4
3	4	1	3	2	3

Lampiran 3 : Jawaban Try Out Non Responden (3)

X3.P1	X3.P2	X3.P3.	X3.P4	X3.P5	X3.P6	X3.P7	X3.P8
1	1	1	1	1	1	1	1
1	1	1	1	1	1	1	1
1	1	1	1	1	1	1	1
2	2	2	2	2	2	2	2
2	2	2	2	2	2	2	2
3	3	3	3	3	3	3	3
3	3	3	3	3	3	3	3
2	2	2	2	2	2	2	2
2	2	2	2	2	2	2	2
3	3	3	3	3	3	3	3
2	2	2	2	2	2	2	2
4	4	4	4	4	4	4	4
3	3	3	3	3	3	3	3
3	3	3	3	3	3	3	3
1	1	1	1	1	1	1	1
3	3	3	3	3	3	3	3
2	2	2	2	2	2	2	2
1	1	1	1	1	1	1	1
2	2	2	2	2	2	2	2
4	4	4	4	4	4	4	4
1	1	1	1	1	1	1	1
3	3	3	3	3	3	3	3
3	3	3	3	3	3	3	3
3	3	3	3	3	3	3	3
3	3	3	3	3	3	3	3
1	1	1	1	1	1	1	1
2	2	1	2	1	3	1	2
1	4	3	3	3	2	2	1
4	3	2	1	4	1	3	3
1	2	2	3	2	3	2	4

Lampiran 4 : Jawaban Try Out Non Responden (4)

X3.P9	X3.P10	X3.P11	X3.P12	X3.P13	X3.P14	X3.P15	X3.P16
1	1	1	1	1	1	1	1
1	1	1	1	1	1	1	1
1	1	1	1	1	1	1	1
2	2	2	2	2	2	2	2
2	2	2	2	2	2	2	2
3	3	3	3	3	3	3	3
3	3	3	3	3	3	3	3
3	3	3	3	3	3	3	3
1	1	1	1	1	1	1	1
3	3	3	3	3	3	3	3
2	2	2	2	2	2	2	2
4	4	4	4	4	4	4	4
3	3	3	3	3	3	3	3
3	3	3	3	3	3	3	3
1	1	1	1	1	1	1	1
4	4	4	4	4	4	4	4
2	2	2	2	2	2	2	2
1	1	1	1	1	1	1	1
2	2	2	2	2	2	2	2
3	3	3	3	3	3	3	3
1	1	1	1	1	1	1	1
3	3	3	3	3	3	3	3
3	3	3	3	3	3	3	3
3	3	3	3	3	3	3	3
2	2	2	2	2	2	2	2
1	1	1	1	1	1	1	1
4	4	2	4	2	3	1	3
4	2	2	3	1	4	2	2
3	3	3	4	1	2	3	3
2	4	4	2	3	1	4	1

Lampiran 5 : Jawaban Try Out Non Responden (5)

Tingkat Peng.					
Y1.P1	Y1.P2	Y1.P3	Y1.P4	Y1.P5	Y1.P6
2	1	1	1	2	2
1	1	1	1	1	1
1	1	1	1	1	1
2	2	2	2	2	2
4	4	3	4	4	4
3	3	3	3	3	3
3	3	3	3	3	3
2	2	2	1	1	3
1	1	1	1	1	2
3	3	3	3	3	3
2	2	2	2	2	2
4	3	3	3	3	3
3	3	3	3	3	3
3	3	3	3	3	3
1	1	2	1	1	1
3	3	3	3	4	4
4	3	3	2	2	2
2	1	2	1	1	1
3	3	3	2	3	2
4	4	4	4	4	4
1	1	1	1	1	1
4	3	3	3	3	3
2	2	2	2	2	2
2	2	3	2	2	3
3	2	2	3	3	3
2	2	1	2	2	2
4	2	3	4	2	3
2	1	3	3	1	2
3	2	1	3	3	3
4	1	3	1	2	1

Lampiran 6 : Uji Validitas Pearson Product Moment pada Jawaban Non Responden Penelitian

Pertanyaan ke-	r-hitung	r-tabel	Keputusan
1	0.652738139	0,361	VALID
2	0.652738139	0,361	VALID
3	0.429342614	0,361	VALID
4	0.412577967	0,361	VALID
5	0.36817442	0,361	VALID
6	0.616829787	0,361	VALID
7	0.327968463	0,361	
8	0.660880612	0,361	VALID
9	0.690978949	0,361	VALID
10	0.572325616	0,361	VALID
11	0.687450393	0,361	VALID
12	0.715228014	0,361	VALID
13	0.643119328	0,361	VALID
14	0.690120225	0,361	VALID
15	0.836430803	0,361	VALID
16	0.875086949	0,361	VALID
17	0.892768016	0,361	VALID
18	0.878443161	0,361	VALID
19	0.848050676	0,361	VALID
20	0.878443161	0,361	VALID
21	0.892768016	0,361	VALID
22	0.834422993	0,361	VALID
23	0.791073041	0,361	VALID
24	0.829039865	0,361	VALID
25	0.864403895	0,361	VALID
26	0.842067573	0,361	VALID
27	0.867631263	0,361	VALID
28	0.859954622	0,361	VALID
29	0.840056453	0,361	VALID
30	0.896943622	0,361	VALID
31	0.760044451	0,361	VALID
32	0.815144738	0,361	VALID
33	0.813642564	0,361	VALID
34	0.752504512	0,361	VALID
35	0.766680482	0,361	VALID

36	0.828080656	0,361	VALID
----	-------------	-------	-------

**RUMUS R hitung**  
**PEARSON (Total jawaban responden per pertanyaan X total jawaban per responden)**

**Tabel Nilai-nilai r Product Moment**

N	Tarf Signifikansi		N	Tarf Signifikansi	
	5 %	1 %		5 %	1 %
3	0,997	0,999	38	0,320	0,413
4	0,950	0,990	39	0,316	0,408
5	0,878	0,959	40	0,312	0,403
6	0,811	0,917	41	0,308	0,398
7	0,754	0,874	42	0,304	0,393
8	0,707	0,834	43	0,301	0,389
9	0,666	0,798	44	0,297	0,384
10	0,632	0,765	45	0,294	0,380
11	0,602	0,735	46	0,291	0,376
12	0,576	0,708	47	0,288	0,372
13	0,553	0,684	48	0,284	0,368
14	0,532	0,661	49	0,281	0,364
15	0,514	0,641	50	0,279	0,361
16	0,497	0,623	55	0,266	0,345
17	0,482	0,606	60	0,254	0,330
18	0,468	0,590	65	0,244	0,317
19	0,456	0,575	70	0,235	0,306
20	0,444	0,561	75	0,227	0,296
21	0,433	0,549	80	0,220	0,286
22	0,423	0,537	85	0,213	0,278
23	0,413	0,526	90	0,207	0,270
24	0,404	0,515	95	0,202	0,263
25	0,396	0,505	100	0,195	0,256
26	0,388	0,496	125	0,176	0,230
27	0,381	0,487	150	0,159	0,210
28	0,374	0,478	175	0,148	0,194
29	0,367	0,470	200	0,138	0,181
30	0,361	0,463	300	0,113	0,148
31	0,355	0,456	400	0,098	0,128
32	0,349	0,449	500	0,088	0,115
33	0,344	0,442	600	0,080	0,105
34	0,339	0,436	700	0,074	0,097
35	0,334	0,430	800	0,070	0,091
36	0,329	0,424	900	0,065	0,086
37	0,325	0,418	1000	0,062	0,081

Lampiran 7 : Uji Reliabilitas Alfa Cronbach pada Jawaban Non Responden Penelitian

$k$	35
$(\frac{k}{k-1})$	1.029411765
$\frac{\sum \sigma_b^2}{\sigma_t^2}$	0.050875974
$(1 - \frac{\sum \sigma_b^2}{\sigma_t^2})$	0.949124026

$$\frac{\sum \sigma_b^2}{\sigma_t^2}$$
 Jumlah jawaban per pertanyaan dibagi Jumlah jawaban per responden



$$r_{11} = \left(\frac{k}{k-1}\right)\left(1 - \frac{\sum \sigma_b^2}{\sigma_t^2}\right)$$

$$r_{11} = 0.977039438$$

Instrumen dikatakan memiliki tingkat reliabilitas tinggi jika nilai  $r_{11}$  lebih tinggi dari 0,6 atau  $>0,6$

Lampiran 8 : Jawaban Responden Penelitian (1)

No	Nama Responden	Tingkat Loyalitas Afiliasi Politik (XI)						
		XI.P1	XI.P2	XI.P3	XI.P4	XI.P5	XI.P6	XI.P8
1	Siti Annisa Aditiansih	3	3	2	3	2	3	3
2	Rinda Alvarez	3	2	3	3	3	3	3
3	Siti Khotimah	3	2	4	4	3	3	3
4	Acep Fahmi	3	3	3	3	3	3	3
5	Ummu Nasichatul Ma'rifah	4	4	3	3	4	4	4
6	Titis Nurliana	3	3	3	3	3	3	3
7	Novi Salbiyah	4	4	4	4	4	4	4
8	Agus Setiadi	2	2	2	3	3	2	4
9	Reza	3	4	4	4	4	2	3
10	Lisnawati	3	3	3	3	4	4	4
11	Fikri Maulana	4	4	4	4	4	4	4
12	Pertamawati	2	2	2	2	2	2	2
13	Nurul Aini Azizah	3	4	4	4	4	4	4
14	Siti Musaropah	3	3	3	3	3	3	3
15	Mita	3	3	4	4	4	2	3
16	Fauziyah	3	3	4	4	3	3	4
17	Riyan Rojiyanto	4	4	4	4	4	4	4
18	Nanda Mirdayanti	3	4	3	3	3	4	4
19	Cahaya	4	4	4	4	4	4	4
20	Kiki Rizki Amaliah	3	3	4	4	4	4	4
21	Vini Syahida	2	3	3	3	3	3	3
22	Syahrul Fahmi	3	1	4	4	3	2	2
23	Nurhaya AG	4	4	3	3	3	4	4
24	Muhammad Jarot Andrianto	3	3	2	4	3	2	3
25	Prio Hary	3	3	3	4	4	3	3
26	Fajar Ilham Mahafi	3	2	4	4	4	4	3
27	Melinda Nurhaliza	3	3	3	4	3	2	2
28	Hilda Fitriani	4	4	4	4	4	3	4
29	Fadia Viyanti Silvana	3	4	3	2	3	4	2
30	Meli Sri Amelia	3	4	4	4	4	2	4

Lampiran 9 : Jawaban Responden Penelitian (2)

Intensitas Konsumsi Media (X2)					
X2.P1	X2.P2	X2.P3	X2.P4	X2.P5	X2.P6
3	2	2	2	2	1
3	3	3	3	3	2
2	2	2	2	2	1
2	2	2	2	1	1
3	2	3	2	1	1
2	1	2	1	2	1
3	2	4	2	2	1
3	2	3	2	1	1
2	1	2	1	2	1
3	2	3	2	2	2
4	2	4	2	4	2
2	1	3	1	2	1
2	1	2	1	2	1
3	3	3	3	3	3
2	3	2	2	4	2
3	2	3	2	3	2
3	3	2	2	2	2
3	2	3	2	3	2
4	4	2	4	2	4
3	2	3	2	4	3
4	1	3	1	3	1
1	2	2	1	1	1
2	2	3	2	3	2
3	2	3	2	3	2
3	4	3	4	3	4
3	4	4	4	4	4
2	3	2	3	3	3
3	3	3	3	3	2
2	1	2	1	2	1
4	3	4	2	2	2





Lampiran 12 : Jawaban Responden Penelitian (5)

Y.P1	Y.P2	Y.P3	Y.P4	Y.P5	Y.P6
2	2	2	1	1	1
2	2	1	2	2	2
3	3	3	3	3	3
1	1	1	1	1	1
2	2	2	2	2	2
1	1	1	1	2	2
3	3	3	3	3	3
1	2	2	2	2	2
2	2	1	2	2	2
2	2	2	2	2	2
4	4	4	4	4	4
2	2	3	3	2	2
2	2	2	2	1	1
3	3	3	3	3	3
2	2	3	3	2	3
3	3	3	3	3	3
2	3	2	2	2	2
3	3	2	2	1	3
1	2	2	1	2	3
3	3	3	3	3	3
3	2	2	2	3	3
2	2	1	2	1	1
2	2	2	2	3	3
3	2	3	3	3	3
3	3	3	3	3	3
4	2	4	4	4	3
2	2	2	2	2	2
3	2	2	2	2	3
2	2	2	2	2	2
2	2	2	2	2	2

Lampiran 13 : Kategorisasi Jawaban Responden Penelitian pada Variabel Tingkat Loyalitas Afiliasi Politik

No	Nama Responden	Tingkat Loyalitas Afiliasi Politik (XI)							Total	Predikat
		XI.P1	XI.P2	XI.P3	XI.P4	XI.P5	XI.P6	XI.P8		
1	Siti Annisa Aditianingsih	3	3	2	3	2	3	3	19	Rendah
2	Rinda Alvarez	3	2	3	3	3	3	3	20	Rendah
3	Siti Khotimah	3	2	4	4	3	3	3	22	Tinggi
4	Acep Fahmi	3	3	3	3	3	3	3	21	Tinggi
5	Ummu Nasichatul Ma'rifah	4	4	3	3	4	4	4	26	Tinggi
6	Titis Nurliana	3	3	3	3	3	3	3	21	Tinggi
7	Novi Salbiyah	4	4	4	4	4	4	4	28	Tinggi
8	Agus Setiadi	2	2	2	3	3	2	4	18	Rendah
9	Reza	3	4	4	4	4	2	3	24	Tinggi
10	Lisnawati	3	3	3	3	4	4	4	24	Tinggi
11	Fikri Maulana	4	4	4	4	4	4	4	28	Tinggi
12	Pertamawati	2	2	2	2	2	2	2	14	Rendah
13	Nurul Aini Azizah	3	4	4	4	4	4	4	27	Tinggi
14	Siti Musaropah	3	3	3	3	3	3	3	21	Tinggi
15	Mita	3	3	4	4	4	2	3	23	Tinggi
16	Fauziyah	3	3	4	4	3	3	4	24	Tinggi
17	Riyan Rojiyanto	4	4	4	4	4	4	4	28	Tinggi
18	Nanda Mirdayanti	3	4	3	3	3	4	4	24	Tinggi
19	Cahaya	4	4	4	4	4	4	4	28	Tinggi
20	Kiki Rizki Amaliah	3	3	4	4	4	4	4	26	Tinggi
21	Vini Syahida	2	3	3	3	3	3	3	20	Rendah
22	Syahrul Fahmi	3	1	4	4	3	2	2	19	Rendah
23	Nurhaya AG	4	4	3	3	3	4	4	25	Tinggi
24	Muhammad Jarot Andrianto	3	3	2	4	3	2	3	20	Rendah
25	Prio Hary	3	3	3	4	4	3	3	23	Tinggi
26	Fajar Ilham Mahafi	3	2	4	4	4	4	3	24	Tinggi
27	Melinda Nurhaliza	3	3	3	4	3	2	2	20	Rendah
28	Hilda Fitriani	4	4	4	4	4	3	4	27	Tinggi
29	Fadia Viyanti Silvana	3	4	3	2	3	4	2	21	Tinggi
30	Meli Sri Amelia	3	4	4	4	4	2	4	25	Tinggi

Lampiran 14 : Kategorisasi Jawaban Responden Penelitian pada Variabel Intensitas Konsumsi Media

No	Nama Responden	Intensitas Konsumsi Media (X2)						Total	Predikat
		X2.P1	X2.P2	X2.P3	X2.P4	X2.P5	X2.P6		
1	Siti Annisa Aditiansih	3	2	2	2	2	1	12	RENDAH
2	Rinda Alvarez	3	3	3	3	3	2	17	RENDAH
3	Siti Khotimah	2	2	2	2	2	1	11	RENDAH
4	Acep Fahmi	2	2	2	2	1	1	10	RENDAH
5	Ummu Nasichatul Ma'rifah	3	2	3	2	1	1	12	RENDAH
6	Titis Nurliana	2	1	2	1	2	1	9	RENDAH
7	Novi Salbiyah	3	2	4	2	2	1	14	RENDAH
8	Agus Setiadi	3	2	3	2	1	1	12	RENDAH
9	Reza	2	1	2	1	2	1	9	RENDAH
10	Lisnawati	3	2	3	2	2	2	14	RENDAH
11	Fikri Maulana	4	2	4	2	4	2	18	Tinggi
12	Pertamawati	2	1	3	1	2	1	10	Rendah
13	Nurul Aini Azizah	2	1	2	1	2	1	9	Rendah
14	Siti Musaropah	3	3	3	3	3	3	18	Tinggi
15	Mita	2	3	2	2	4	2	15	RENDAH
16	Fauziyah	3	2	3	2	3	2	15	RENDAH
17	Riyan Rojiyanto	3	3	2	2	2	2	14	RENDAH
18	Nanda Mirdayanti	3	2	3	2	3	2	15	RENDAH
19	Cahaya	4	4	2	4	2	4	20	Tinggi
20	Kiki Rizki Amaliah	3	2	3	2	4	3	17	RENDAH
21	Vini Syahida	4	1	3	1	3	1	13	RENDAH
22	Syahrul Fahmi	1	2	2	1	1	1	8	RENDAH
23	Nurhaya AG	2	2	3	2	3	2	14	RENDAH
24	Muhammad Jarot Andrianto	3	2	3	2	3	2	15	RENDAH
25	Prio Hary	3	4	3	4	3	4	21	Tinggi
26	Fajar Ilham Mahafi	3	4	4	4	4	4	23	Tinggi
27	Melinda Nurhaliza	2	3	2	3	3	3	16	RENDAH
28	Hilda Fitriani	3	3	3	3	3	2	17	RENDAH
29	Fadia Viyanti Silvana	2	1	2	1	2	1	9	RENDAH
30	Meli Sri Amelia	4	3	4	2	2	2	17	RENDAH



Lampiran 15 : Kategorisasi Jawaban Responden Penelitian pada Variabel Intensitas Komunikasi *Peer Group*

Intensitas Komunikasi Peer Group (X3)											
X3.P1	X3.P2	X3.P3	X3.P4	X3.P5	X3.P6	X3.P7	X3.P8	X3.P9	X3.P10	X3.P11	X3.P12
2	2	2	2	3	2	2	1	2	1	2	1
2	2	2	2	2	1	2	1	1	1	1	1
2	2	3	2	3	3	2	2	2	1	1	1
2	2	2	2	2	2	2	2	1	1	1	1
2	1	2	1	2	1	3	3	2	1	2	1
1	1	2	1	2	1	2	1	1	1	1	1
3	1	4	2	3	2	3	2	2	1	3	2
2	2	2	1	2	1	2	4	1	1	1	1
2	1	2	2	3	2	2	1	2	1	2	1
2	2	2	2	2	2	2	2	2	2	2	2
4	3	4	3	4	3	4	3	4	3	4	3
2	1	2	1	3	1	3	2	2	1	3	1
3	2	2	1	2	3	3	3	2	2	1	1
3	1	3	2	3	3	3	3	3	1	1	1
1	2	1	2	2	2	2	2	1	1	1	3
3	4	3	3	3	4	2	3	3	3	3	4
2	2	2	2	2	2	2	2	2	2	2	2
2	2	2	2	2	2	3	2	3	3	2	1
1	4	1	4	2	4	2	4	1	4	1	3
3	3	3	4	3	3	3	3	3	3	2	1
3	1	3	1	3	1	3	1	3	1	3	1
2	2	3	2	2	1	1	1	2	1	1	2
2	1	2	2	3	1	2	1	1	1	1	1
3	2	3	2	2	2	2	2	2	2	3	3
3	2	2	2	1	3	2	3	2	1	2	1
4	4	4	4	3	4	4	4	2	1	4	3
3	3	3	2	2	3	2	2	2	2	4	2
2	2	3	2	3	3	2	2	2	2	1	1
2	1	2	1	2	1	2	1	2	1	2	1
2	2	2	2	2	2	2	3	2	2	2	2

Lampiran 16 : Jawaban Responden Penelitian pada Variabel Intensitas Komunikasi *Peer Group* (2)

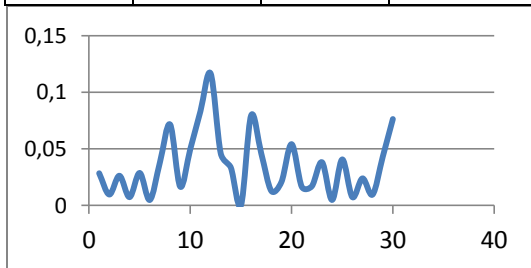
Intensitas Komunikasi Peer Group (X3)				Total	Predikat
X3.P13	X3.P14	X3.P15	X3.P16		
2	2	2	2	30	Rendah
1	1	2	1	23	Rendah
2	2	2	1	31	Rendah
2	2	2	2	28	Rendah
3	3	2	2	31	Rendah
2	1	2	1	21	Rendah
3	2	2	1	36	Rendah
2	2	2	1	27	Rendah
2	2	2	1	28	Rendah
2	2	3	2	33	Rendah
4	3	4	3	56	Tinggi
2	1	2	1	28	Rendah
3	3	3	3	37	Rendah
1	1	3	3	35	Rendah
2	2	2	2	28	Rendah
3	3	2	3	49	Tinggi
2	2	2	2	32	Rendah
3	2	3	2	36	Rendah
1	4	1	1	38	Rendah
2	1	3	3	43	Rendah
3	1	3	1	32	Rendah
2	1	2	1	26	Rendah
2	2	2	2	26	Rendah
3	3	3	3	40	Rendah
3	2	3	2	34	Rendah
4	2	4	3	54	Tinggi
3	3	3	2	41	Rendah
3	3	3	2	36	Rendah
2	1	2	1	24	Rendah
2	2	2	2	33	Rendah

Lampiran 17 : Kategorisasi Jawaban Responden Penelitian pada Variabel Tingkat Pengetahuan Mengenai RKUHP

No	Nama Responden	Tingkat Pengetahuan mengenai RKUHP (Y)						Total	Predikat
		Y.P1	Y.P2	Y.P3	Y.P4	Y.P5	Y.P6		
1	Siti Annisa Aditianingsih	2	2	2	1	1	1	9	Rendah
2	Rinda Alvarez	2	2	1	2	2	2	11	Rendah
3	Siti Khotimah	3	3	3	3	3	3	18	Tinggi
4	Acep Fahmi	1	1	1	1	1	1	6	Rendah
5	Ummu Nasichatul Ma'rifah	2	2	2	2	2	2	12	Rendah
6	Titis Nurliana	1	1	1	1	2	2	8	Rendah
7	Novi Salbiyah	3	3	3	3	3	3	18	tinggi
8	Agus Setiadi	1	2	2	2	2	2	11	Rendah
9	Reza	2	2	1	2	2	2	11	Rendah
10	Lisnawati	2	2	2	2	2	2	12	Rendah
11	Fikri Maulana	4	4	4	4	4	4	24	Tinggi
12	Pertamawati	2	2	3	3	2	2	14	Rendah
13	Nurul Aini Azizah	2	2	2	2	1	1	10	Rendah
14	Siti Musaropah	3	3	3	3	3	3	18	Rendah
15	Mita	2	2	3	3	2	3	15	Rendah
16	Fauziyah	3	3	3	3	3	3	18	tinggi
17	Riyan Rojiyanto	2	3	2	2	2	2	13	Rendah
18	Nanda Mirdayanti	3	3	2	2	1	3	14	Rendah
19	Cahaya	1	2	2	1	2	3	11	Rendah
20	Kiki Rizki Amaliah	3	3	3	3	3	3	18	Tinggi
21	Vini Syahida	3	2	2	2	3	3	15	Rendah
22	Syahrul Fahmi	2	2	1	2	1	1	9	Rendah
23	Nurhaya AG	2	2	2	2	3	3	14	Rendah
24	Muhammad Jarot Andrianto	3	2	3	3	3	3	17	Rendah
25	Prio Hary	3	3	3	3	3	3	18	Tinggi
26	Fajar Ilham Mahafi	4	2	4	4	4	3	21	Tinggi
27	Melinda Nurhaliza	2	2	2	2	2	2	12	Rendah
28	Hilda Fitriani	3	2	2	2	2	3	14	Rendah
29	Fadia Viyanti Silvana	2	2	2	2	2	2	12	Rendah
30	Meli Sri Amelia	2	2	2	2	2	2	12	Rendah

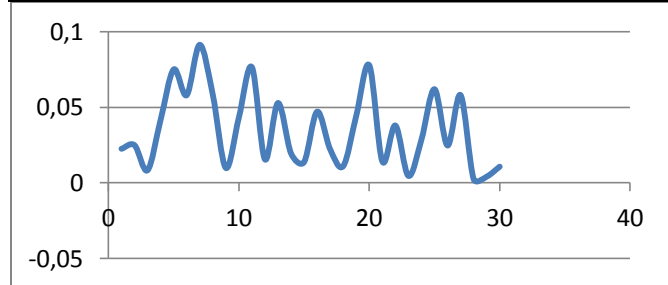
Lampiran 18 : Uji Asumsi Klasik: Uji Normalitas Kolmogorov Smirnov Variabel Tingkat Loyalitas Afiliasi Politik

X1	Freq	Cumul	Sn(x)	z-score	F(x)	Difference
14	1	1	0.033333333	-2.575964522	0.004998	0.028335288
18	1	2	0.066666667	-1.431091401	0.076202	0.009535344
19	1	3	0.1	-1.144873121	0.126131	0.02613086
19	1	4	0.133333333	-1.144873121	0.126131	0.007202473
20	1	5	0.166666667	-0.858654841	0.195265	0.028598819
20	1	6	0.2	-0.858654841	0.195265	0.004734514
20	1	7	0.233333333	-0.858654841	0.195265	0.038067847
20	1	8	0.266666667	-0.858654841	0.195265	0.071401181
21	1	9	0.3	-0.572436561	0.283513	0.016486874
21	1	10	0.333333333	-0.572436561	0.283513	0.049820207
21	1	11	0.366666667	-0.572436561	0.283513	0.08315354
21	1	12	0.4	-0.572436561	0.283513	0.116486874
22	1	13	0.433333333	-0.28621828	0.387355	0.045977862
23	1	14	0.466666667	0	0.5	0.033333333
23	1	15	0.5	0	0.5	0
24	1	16	0.533333333	0.28621828	0.612645	0.079311195
24	1	17	0.566666667	0.28621828	0.612645	0.045977862
24	1	18	0.6	0.28621828	0.612645	0.012644528
24	1	19	0.633333333	0.28621828	0.612645	0.020688805
24	1	20	0.666666667	0.28621828	0.612645	0.054022138
25	1	21	0.7	0.572436561	0.716487	0.016486874
25	1	22	0.733333333	0.572436561	0.716487	0.01684646
26	1	23	0.766666667	0.858654841	0.804735	0.038067847
26	1	24	0.8	0.858654841	0.804735	0.004734514
27	1	25	0.833333333	1.144873121	0.873869	0.040535807
27	1	26	0.866666667	1.144873121	0.873869	0.007202473
28	1	27	0.9	1.431091401	0.923798	0.023797989
28	1	28	0.933333333	1.431091401	0.923798	0.009535344
28	1	29	0.966666667	1.431091401	0.923798	0.042868677
28	1	30	1	1.431091401	0.923798	0.076202011



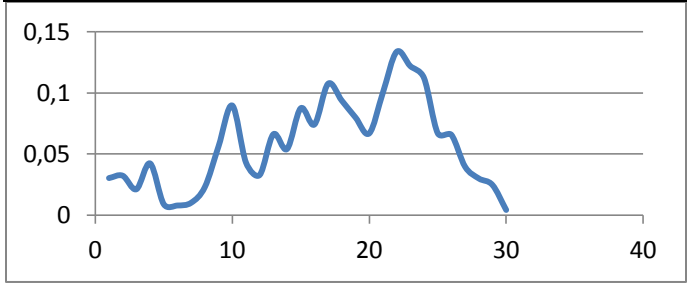
Lampiran 19 : Uji Asumsi Klasik: Uji Normalitas Kolmogorov Smirnov Variabel Intensitas Konsumsi Media

X2	Freq	Cumul	Sn(x)	z-score	F(x)	Difference
8	1	1	0.033333333	-1.590090865	0.055907	0.022573829
9	1	2	0.066666667	-1.330836919	0.091621	0.024954672
9	1	3	0.1	-1.330836919	0.091621	0.008378661
9	1	4	0.133333333	-1.330836919	0.091621	0.041711995
9	1	5	0.166666667	-1.330836919	0.091621	0.075045328
10	1	6	0.2	-1.071582974	0.141954	0.058046308
10	1	7	0.233333333	-1.071582974	0.141954	0.091379641
11	1	8	0.266666667	-0.812329029	0.208301	0.058365238
12	1	9	0.3	-0.553075083	0.290106	0.009894001
12	1	10	0.333333333	-0.553075083	0.290106	0.043227335
12	1	11	0.366666667	-0.553075083	0.290106	0.076560668
13	1	12	0.4	-0.293821138	0.384447	0.015552709
14	1	13	0.433333333	-0.034567193	0.486212	0.052879098
14	1	14	0.466666667	-0.034567193	0.486212	0.019545764
14	1	15	0.5	-0.034567193	0.486212	0.013787569
14	1	16	0.533333333	-0.034567193	0.486212	0.047120902
15	1	17	0.566666667	0.224686753	0.588889	0.022221848
15	1	18	0.6	0.224686753	0.588889	0.011111486
15	1	19	0.633333333	0.224686753	0.588889	0.044444819
15	1	20	0.666666667	0.224686753	0.588889	0.077778152
16	1	21	0.7	0.483940698	0.685786	0.014213978
17	1	22	0.733333333	0.743194643	0.771318	0.037984744
17	1	23	0.766666667	0.743194643	0.771318	0.00465141
17	1	24	0.8	0.743194643	0.771318	0.028681923
17	1	25	0.833333333	0.743194643	0.771318	0.062015256
18	1	26	0.866666667	1.002448589	0.841937	0.024730159
18	1	27	0.9	1.002448589	0.841937	0.058063493
20	1	28	0.933333333	1.520956479	0.935865	0.002531287
21	1	29	0.966666667	1.780210424	0.962479	0.004187432
23	1	30	1	2.298718315	0.98924	0.01076047



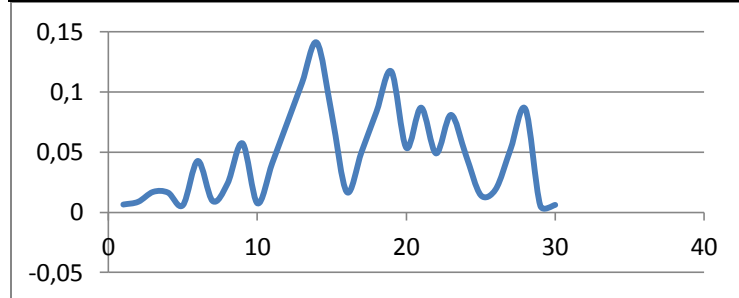
Lampiran 20 : Uji Asumsi Klasik: Uji Normalitas Kolmogorov Smirnov Variabel Intensitas Komunikasi *Peer Group*

X3	Freq	Cumul	Sn(x)	z-score	F(x)	Difference
21	1	1	0.033333333	-1.523862531	0.063772	0.030438194
23	1	2	0.066666667	-1.286992708	0.099048	0.032381748
24	1	3	0.1	-1.168557796	0.121291	0.02129092
26	1	4	0.133333333	-0.931687973	0.175749	0.042415569
26	1	5	0.166666667	-0.931687973	0.175749	0.009082235
27	1	6	0.2	-0.813253061	0.208036	0.008036492
28	1	7	0.233333333	-0.694818149	0.243585	0.010251303
28	1	8	0.266666667	-0.694818149	0.243585	0.02308203
28	1	9	0.3	-0.694818149	0.243585	0.056415364
28	1	10	0.333333333	-0.694818149	0.243585	0.089748697
30	1	11	0.366666667	-0.457948325	0.323495	0.043171883
31	1	12	0.4	-0.339513414	0.367111	0.032888503
31	1	13	0.433333333	-0.339513414	0.367111	0.066221836
32	1	14	0.466666667	-0.221078502	0.412516	0.054151012
32	1	15	0.5	-0.221078502	0.412516	0.087484345
33	1	16	0.533333333	-0.10264359	0.459123	0.074210411
33	1	17	0.566666667	-0.10264359	0.459123	0.107543744
34	1	18	0.6	0.015791322	0.5063	0.093700436
35	1	19	0.633333333	0.134226233	0.553388	0.079945175
36	1	20	0.666666667	0.252661145	0.599735	0.066931704
36	1	21	0.7	0.252661145	0.599735	0.100265038
36	1	22	0.733333333	0.252661145	0.599735	0.133598371
37	1	23	0.766666667	0.371096057	0.644717	0.121949661
38	1	24	0.8	0.489530969	0.687767	0.112232918
40	1	25	0.833333333	0.726400792	0.766203	0.067129886
41	1	26	0.866666667	0.844835704	0.800899	0.065767955
43	1	27	0.9	1.081705527	0.860308	0.039691698
49	1	28	0.933333333	1.792314998	0.963459	0.030125406
54	1	29	0.966666667	2.384489557	0.991449	0.024781917
56	1	30	1	2.62135938	0.995621	0.004378994



Lampiran 21 : Uji Asumsi Klasik: Uji Normalitas Kolmogorov Smirnov Variabel Tingkat Pengetahuan Mengenai RKUHP

Y	Freq	Cumul	Sn(x)	z-score	F(x)	Difference
6	1	1	0.033333333	-1.929105404	0.026859	0.006474444
8	1	2	0.066666667	-1.436567854	0.07542	0.008753745
9	1	3	0.1	-1.190299079	0.116964	0.016964431
9	1	4	0.133333333	-1.190299079	0.116964	0.016368902
10	1	5	0.166666667	-0.944030304	0.172577	0.005910415
11	1	6	0.2	-0.697761529	0.242663	0.042663171
11	1	7	0.233333333	-0.697761529	0.242663	0.009329838
11	1	8	0.266666667	-0.697761529	0.242663	0.024003496
11	1	9	0.3	-0.697761529	0.242663	0.057336829
12	1	10	0.333333333	-0.451492754	0.325817	0.007516111
12	1	11	0.366666667	-0.451492754	0.325817	0.040849444
12	1	12	0.4	-0.451492754	0.325817	0.074182777
12	1	13	0.433333333	-0.451492754	0.325817	0.107516111
12	1	14	0.466666667	-0.451492754	0.325817	0.140849444
13	1	15	0.5	-0.205223979	0.418699	0.081301432
14	1	16	0.533333333	0.041044796	0.51637	0.016963425
14	1	17	0.566666667	0.041044796	0.51637	0.050296759
14	1	18	0.6	0.041044796	0.51637	0.083630092
14	1	19	0.633333333	0.041044796	0.51637	0.116963425
15	1	20	0.666666667	0.287313571	0.613064	0.053602783
15	1	21	0.7	0.287313571	0.613064	0.086936116
17	1	22	0.733333333	0.779851121	0.782261	0.048927411
18	1	23	0.766666667	1.026119896	0.847582	0.080915797
18	1	24	0.8	1.026119896	0.847582	0.047582463
18	1	25	0.833333333	1.026119896	0.847582	0.01424913
18	1	26	0.866666667	1.026119896	0.847582	0.019084203
18	1	27	0.9	1.026119896	0.847582	0.052417537
18	1	28	0.933333333	1.026119896	0.847582	0.08575087
21	1	29	0.966666667	1.76492622	0.961212	0.00545475
24	1	30	1	2.503732545	0.993855	0.006144545









Lampiran 24 : Uji Regresi Linier Berganda

X1	X2	X3	Y	SUMMARY OUTPUT										
14	8	21	6											
18	9	23	8	<i>Regression Statistics</i>										
19	9	24	9	Multiple R	0.97813146720177									
19	9	26	9	R Square	0.95674116713028									
20	9	26	10	Adjusted R Square	0.95174976333762									
20	10	27	11	Standard Error	0.89194972084074									
20	10	28	11	Observations	30									
21	12	28	12	<i>ANOVA</i>										
21	12	30	12		<i>df</i>	<i>SS</i>	<i>MS</i>	<i>F</i>	<i>Significance F</i>					
21	13	31	12	Regression	3	457.48173474946	152.49391158315	191.67777380327	7.6157304217905E-18					
22	14	31	12	Residual	26	20.684931917205	0.79557430450787							
23	14	32	12	Total	29	478.16666666667								
24	15	33	14		<i>Coefficients</i>	<i>Standard Error</i>	<i>t Stat</i>	<i>P-value</i>	<i>Lower 95%</i>	<i>Upper 95%</i>	<i>Lower 95.0%</i>	<i>Upper 95.0%</i>		
24	15	33	14	Intercept	-5.2295375047435	1.8056265339275	-2.89624537880960	0.0075598675687602	-8.9410560004262	-1.5180190090609	-8.9410560004262	-1.5180190090609		
24	15	33	14	X1	0.37058810945518	0.15129472701192	2.4494449791761	0.021356795634489	0.0595973441707350	0.68157887473962	0.0595973441707350	0.68157887473962		
24	15	34	14	X2	0.38204363755583	0.21769140321094	1.7549780649153	0.091041861161137	-0.065427450283739	0.8295147253954	-0.065427450283739	0.8295147253954		
24	15	35	14	X3	0.151765578045830	0.075177587556937	2.01876094961	0.0539361858666790	0.00276416630360770	0.306295322395260	0.00276416630360770	0.306295322395260		
25	16	36	15											
25	17	36	17											
26	17	37	18	<i>RESIDUAL OUTPUT</i>										
26	17	38	18											
27	17	40	18		<i>Observation</i>	<i>Predicted Y</i>	<i>Residuals</i>	<i>Standard Residuals</i>						
27	18	41	18		1	6.202122267038	-0.20212226703799	-0.23932392221889						
28	18	43	18		2	8.3700494985062	-0.37004949850619	-0.43815903460546						
28	20	49	18		3	8.8924031860072	0.1075968139928	0.12740056758899						
28	21	54	21		4	9.1959343420989	-0.19593434209885	-0.23199707749004						
28	23	56	24		5	9.566522451554	0.43347754844597	0.51326134724393						
					6	10.100331667156	0.89966833284431	1.0652569717712						
					7	10.252097245202	0.74790275479848	0.88555814923173						
					8	10.634140882757	0.36585911724265	0.4331973918618						
					9	11.386772629768	-0.38677262976835	-0.45796014521091						
					10	11.386772629768	0.61322737023165	0.72609505922584						
					11	11.69030378586	0.30969621413999	0.36669741414682						
					12	12.224113001462	-0.22411300146167	-0.26536216576263						
					13	12.976744748473	-0.97674474847267	-1.1565197028353						
					14	13.499098435974	-1.4990984359737	-1.7750153050776						
					15	13.499098435974	-0.49909843597368	-0.59096010064088						
					16	14.0214521234750	0.0214521234746870	0.0254004988446422						
					17	14.403495761031	-0.40349576103051	-0.47776125581835						
					18	14.555261339076	-0.55526133907634	-0.65746007835586						
					19	14.707026917122	-0.70702691712217	-0.83715890089538						
					20	14.858792495168	0.141207504832	0.16719748100186						
					21	15.611424242179	-0.61142424217901	-0.72396005607085						
					22	15.993467879735	1.0065321202652	1.1917895954327						
					23	16.515821567236	1.4841784327642	1.7573491976272						
					24	16.667587145282	1.3324128547183	1.5776503750877						
					25	17.341706410829	0.6582935891715	0.77945595030586						
					26	17.87551562643	0.12448437356984	0.14739637039642						
					27	18.549634891977	-0.54963489197699	-0.65079805438539						
					28	20.224315635364	-2.2243156353636	-2.6337125043623						
					29	21.365187163149	-0.36518716314858	-0.43240176111957						
					30	22.432805594352	1.5671944056481	1.8556446923718						