

# Improving Performance Of Low Pressure Reverse Osmosis Systems By Intermittent Autoflushing

*by* Nazaruddin Sinaga

---

**Submission date:** 13-Jan-2020 08:32PM (UTC+0700)

**Submission ID:** 1241442798

**File name:** 11.pdf (429.05K)

**Word count:** 3817

**Character count:** 18809

## **IMPROVING PERFORMANCE OF LOW PRESSURE REVERSE OSMOSIS SYSTEMS BY INTERMITTENT AUTOFLUSHING**

**I N. Widiassa<sup>1\*</sup>, N. Sinaga<sup>2</sup>, and D. Ariyanti<sup>3</sup>**

## 1. Introduction

Water is very essential to human life. The improvement standard of living from time to time has increasing the water quality standard that needed by human. In contrast, quality of water in every resource in the world was decline due to industrial growth and human activity. Reverse osmosis (RO) membrane is becoming a common treatment method for contaminated drinking water (Effendi, 2003; Eisenberg and Middlebrooks, 1986; Daigger, 2008). RO is probably best known for its use in desalination projects. However, it is also effective for treating water quality problems in the home.

RO membrane system can reduce the amounts of organics, inorganic, bacteria and particulates that can be found in contaminated drinking water. Even though, RO membrane has limitation, especially once scaling phenomena appear in the system (Fisher et al., 2007; Mustofa, 2007; Song et al., 2003). Scaling defines as precipitation of sparingly soluble salts on membrane surfaces. Scaling can cause permeate flux decline, degradation of salt rejection and permanent damage in membrane which affected membrane performance and membrane life time (Mustofa, 2007; Song et al., 2003; Gloede and Melin, 2007; Tzotzi et al., 2007; Chesters, 2009; Oh et al., 2009).

Generally, scaling is related to feed water characteristic (Wang, 2005). Water resources such as river, lake, basin, well water and brackish water contains inorganic compounds which responsible for scaling. The inorganic compounds include calcium carbonate ( $\text{CaCO}_3$ ), barium sulfate ( $\text{BaSO}_4$ ), silica ( $\text{SiO}_2$ ), and calcium sulfate ( $\text{CaSO}_4$ ), calcium fluoride ( $\text{CaF}_2$ ), strontium sulfate, ( $\text{SrSO}_4$ ) and magnesium hydroxide ( $\text{Mg}(\text{OH})_2$ ) (Effendi, 2003; Daigger, 2008).

Calcium carbonate scale is the first scale that occurs on the membrane surface (Singh, 2006). Detailed studies on  $\text{CaCO}_3$  scale formation in membrane systems are limited, such as laboratory procedure for characterization of the  $\text{CaCO}_3$  scaling propensity of RO feed waters and for evaluating antiscalant effectiveness (Drak et al., 2000); induction time of  $\text{CaCO}_3$  scale formation during flow in porous media (Stamatakis et al., 2005); and scale formation of  $\text{CaCO}_3$  in RO and NF membranes (Tzotzi et al., 2007).

In the process of separation using RO membrane, there will be an increased

concentration of the scaleforming species in the bulk due to permeate withdrawal. This is further enhanced in the region next to the membrane surface by the superimposed effect of concentration polarization; concentration polarization phenomena will lead to saturation and super saturation condition, by the time concentration of sparingly soluble salts exceed their solubility limit. In this condition nuclei will occur and grow (Tzotzi et al., 2007; Wang, 2005).

The ability to predict scaling is an important tool in controlling its occurrence (Song et al., 2003; Tzotzi et al., 2007). The methods that can be used to predict scaling especially for calcium carbonate scale, i.e. langelier saturation index (LSI), stiff davis stability index and ryznar stability index. The common one in practice is langelier saturation index (LSI) which shown the calcium carbonate equilibrium in water by calculate delta between system's pH and saturation pH of calcium carbonate (Song et al., 2003).

For controlling scale formation, many methods has been used, such as reducing permeate flux withdrawal during separation process which can reduce the rate of precipitation (Sheikholeslami and Ong, 2003). This method has drawback, quantity of product cannot be maximum. Other method is antiscalant addition (Sagle and Freeman, 2004). This method economically applicable in industrial RO membrane system, but not in household system since the procedure and equipment were very complex.

Apart from above, there is one method called intermittent autoflush. The method is mechanical technique which based on automatic degradation of operating pressure in couple of time. In this time feed water will flush the membrane surface and bring out all components which might be concentrated on the membrane surface (Bray, 1976; Chen et al., 2003; Shon et al., 2007; Anonym, 2008). Intermittent autoflush method did not use chemical agent and automatically worked while separation proceed, also only applicable for low pressure RO membrane. From this point of view intermittent autoflush may be suitable for household RO system. Many inventions related to autoflush system for membrane process such as reverse osmosis system with automatic flushing (Bray, 1976); compact reverse osmosis system with cold water flush (Mora et al., 1992); hydrostatically driven osmotic membrane flush system (Schoenmeyr, 1997); while experimental data

about the feasibility of intermittent autoflush to prevent  $\text{CaCO}_3$  scale formation in household RO system still not available on literature.

The scope of this work is two-fold: first to investigate the trend of flux decline due to scaling in various LSI value with full recycle mode in relatively short runs 6 h. A second objective is to examine the effectiveness of intermittent autoflush method (by varying the interval and duration time) in the same household RO system under identical conditions.

## 2. Methodology

### Model Solution

In this project, bicarbonate model solution was used as feed water by mixing a number of  $\text{CaCl}_2$  and  $\text{NaHCO}_3$  (Merck) in 1L distilled water. The concentration was varying as mentioned in Table 1.

**Table 1. Variation model solution concentration**

No	$\text{CaCl}_2$ (ppm)	$\text{NaHCO}_3$ (ppm)
1	150	227
2	200	302
3	260	393
4	400	605
5	800	1210

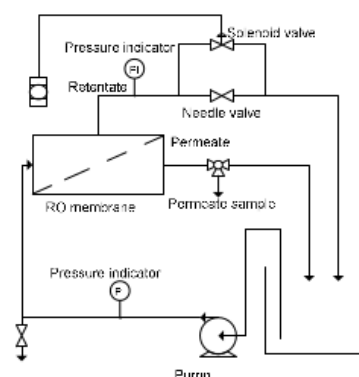
$\text{Ca}^{2+}$  content, pH and TDS (total dissolved solid) value of model solution were analyzed by EDTA titration method, pH meter and TDS meter.

### Household RO membrane

All experiments were carried out using commercially available spiral wound RO membrane (CSM RE-1812LP) supplied by Saehan Industries Inc. The RO membrane was made of polyamide with negative surface charge. The membrane was fabricated as thin film composite and configured as spiral wound. Outer diameter and length of the RO membrane were 1.77 and 11.8 inch, respectively. The membrane system was supported by a diaphragm pump, a feed water tank and a timer as autoflush controller. In the beginning, membrane conditioning was conducted for stabilizing the membrane in total recycle mode during 6 hours at pressure of  $5 \text{ kg/cm}^2$  and flowrate of 60 l/h (see Figure 1).

### Experiment

The aim of the first experiment is to investigate the trend of flux decline due to scaling in various LSI value. The system was operated without intermittent autoflush



**Figure 1. Schematic diagram of the experimental set-up**

The first method using feed water in various LSI value as mentioned in Table 2. The system also operated in total recycle mode during 6 hours at pressure of  $5 \text{ kg/cm}^2$  and flow rate of 60 l/h. Sample of permeate was taken every 20 min, for flux analysis.

**Table 2. Run without intermittent autoflush method**

No	LSI	Run without autoflush
1	0	✓
2	+0,31	✓
3	+0,8	✓
4	+1,2	✓
5	+1,5	✓

**Table 3. Run with intermittent autoflush method**

Duration (sec)	Interval (min)	LSI Value			
		0,31	0,8	1,2	1,5
60	5	✓	✓	✓	✓
	10	✓	✓	✓	✓
	15	✓	✓	✓	✓
	20	✓	✓	✓	✓
	25	✓	✓	✓	✓
	30	✓	✓	✓	✓
30	5	✓	✓	✓	✓
	10	✓	✓	✓	✓
	15	✓	✓	✓	✓
	20	✓	✓	✓	✓
	25	✓	✓	✓	✓
	30	✓	✓	✓	✓
15	5	✓	✓	✓	✓
	10	✓	✓	✓	✓
	15	✓	✓	✓	✓
	20	✓	✓	✓	✓
	25	✓	✓	✓	✓
	30	✓	✓	✓	✓

The second step of the experiment conducted using intermittent autoflush method. The system was run in the variation of two autoflush parameters i.e. duration and interval which is shown in Table 3. Identical condition and the same analysis method also used in this experiment.

Membrane samples were prepared for microscopic observations by cutting one or more small pieces of the scaled membrane and then attaching them to a bronze mount. Scanning electron microscopy (SEM) observations were made after gold sputtering in a JEOL JSM 6063 unit. X-ray micro analysis (EDS) was performed in an OXFORD LINK ISIS 300 system on samples with carbon coating.

### 3. Results and Discussion

#### Flux decline in various LSI value in the system without intermittent autoflush method

Figure 2 presents flux measurement for different LSI values. In some experiment a small initial increase of the flux was observed. For LSI = 0 and 0.31, the trend of flux were stable during operation time, a rather small flux decline in the range of 3-6% were observed, apparently due to the membrane conditioning (compaction, etc.). The small flux decline in above range was close to 5-8% which the range of the same phenomena shown in other experiments (Tzotzi et al., 2007).

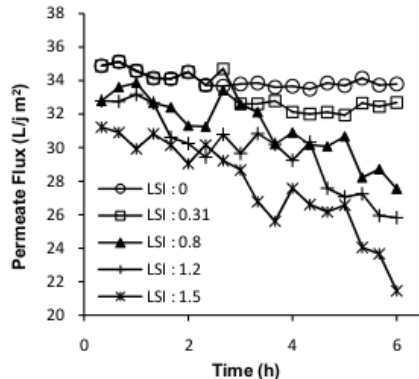


Figure 2. Permeate flux curves in various LSI value (0-1.5) in experiments without intermittent autoflush method

Figure 2 also shown the significant flux decline in LSI = 0.8; 1.2 and 1.5. Permeate flux of LSI 0.8 was decreased up to 16% and so did the permeate flux of LSI 1.2 and 1.5; both were decreased about 21.23% and 31.28%

from initial flux. Under the conditions and for the limited duration of these experiments (6 hours), it was found that onset scaling in the household RO membrane surface occurs between LSI 0.31-0.8.

From  $Ca^{2+}$  concentration in the feed water point of view also can be stated the same. Figure 3 presents the  $Ca^{2+}$  concentration measurement in the same experiments with above flux measurement.

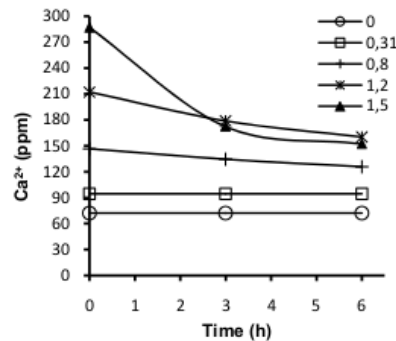


Figure 3.  $Ca^{2+}$  concentration curves in various LSI value (0-1.5) in experiments without intermittent autoflush method

For LSI=0 and 0.31, the  $Ca^{2+}$  concentration were same both in the initial and in the end of experiment. In contrast, the  $Ca^{2+}$  concentration for LSI=0.8; 1.2; 1.5 were decreased 14% up to 46.9% from initial  $Ca^{2+}$  concentration in the feed water. This data were obviously supported the earlier statement that onset scaling in the household RO membrane surface occurs between LSI 0.31-0.8. The decrease of  $Ca^{2+}$  concentration indicates that the ions were polarized in the membrane surface to form scale and covering the membrane surface which lead to reduction of the available filtration area and permeate flux decline.

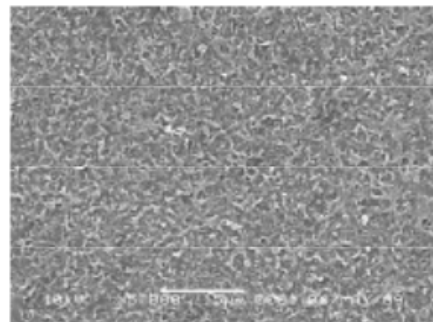


Figure 4. SEM micrograph membrane surface of polyamide free from scale

The scale formation can also be seen by visual observation in the membrane surface. The micro image of the scale was analyzed using analytical scanning electron microscope (SEM). Figure 4 present membrane surface of polyamide free from scale. While figure 5 and 6 show that there are scale at the membrane surface in the deposit form, after experiments without intermittent autoflush conducted.

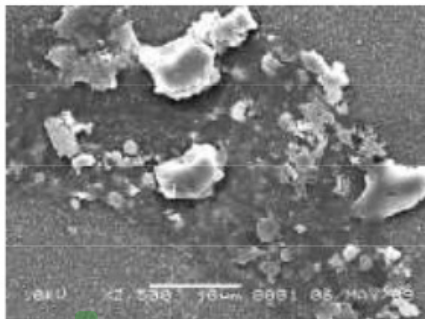


Figure 5. SEM micrograph of scale in deposit form on the membrane surface lateraly

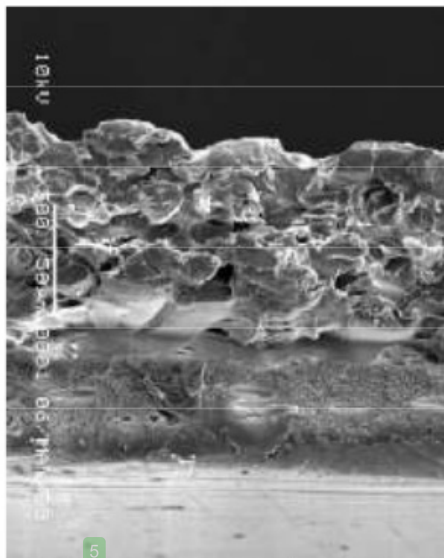


Figure 6. SEM micrograph of scale in deposit form on the membrane surface in cross section point of view

Cake layer scale in the deposit form on the membrane surface was formed due to bulk (homogeneous) crystalization. Bulk (homogeneous) crystalization is one of pathways of scaling mechanism. In this mechanism, crystals formed in the bulk

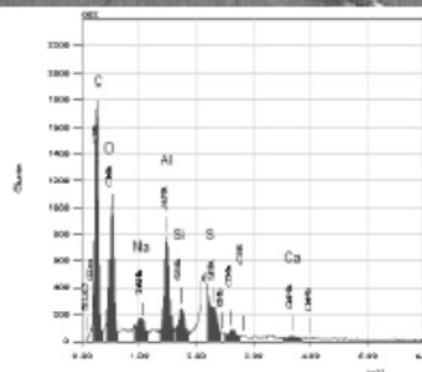
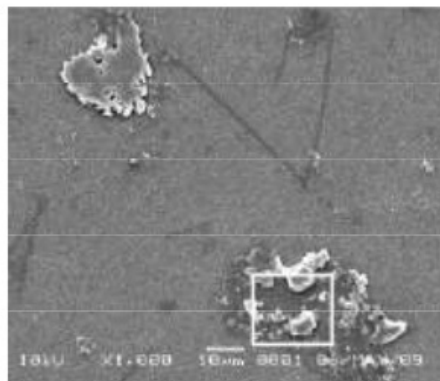


Figure .7 EDS analysis of scale on the membrane surface

mechanism, crystals formed in the bulk solution sediment on the membrane surface leading to flux decline (Oh et al., 2009). The content of scale which is formed on the membrane surface can be analyzed using energy dispersive X-ray spectrometer (EDS). Figure 7 shown the scale which is formed in one spot on the membrane surface and the analysis result of scale components at that zone. EDS analysis shown the peak of Ca which expressed that there are scale in the form of calcium carbonate on the membrane surface.

#### Trend of permeate flux in various interval in the system with intermittent autoflush method

A study was also carried out to assess the scale suppression effectiveness of various intermittent autoflush parameter combinations at the same condition. Result from previous section shown that scaling occurs in the membrane surface at LSI value 0.8-1.5. According to the result, trend of permeate flux in various interval in the

system with intermittent autoflush method were observed in the range of LSI value 0.8-1.5. Interval is the time between first autoflush process and the next process. The autoflush duration was set for 60 sec operation time and various intervals in the range of 5-60 min. The assessment was made in the terms of monitoring of the permeate flux as well as concentration of  $Ca^{2+}$  in the feed water. Judging from the evaluation of permeate flux, intermittent autoflush method in the variation of parameter combination tested in the present work appear to be effective in suppressing calcium carbonate scale formation on the membrane surface.

Figure 8, 9 and 10 present the permeate flux measurement for different autoflush interval at LSI value 0.8-1.5. For LSI=0.8 (Figure 8) and LSI=1.2 (Figure 9), there were two tendency observed in both of permeate flux trend. First was in the interval 5-25 min, the permeate flux relatively stable in 37-38 L/h m<sup>2</sup>. On the other hand, the second tendency was in the interval 30-60 min, permeate flux seems decline insignificantly in 34-35 L/h m<sup>2</sup>.

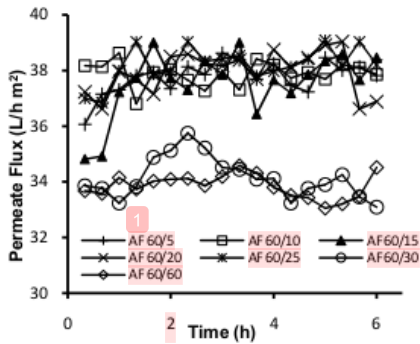


Figure 8. Permeate flux curves in experiments with intermittent autoflush method; LSI=0.8; 60 sec duration time in various interval (5-60 min)

Even all interval time seems to be effective in suppressing calcium carbonate scale formation in both LSI value 0.8 and 1.2, but the monitoring of  $Ca^{2+}$  concentration in the feed water during the experiment shown different.  $Ca^{2+}$  concentration in both LSI value 0.8 and 1.2 starts decreasing at the interval 30 min for about 10-14%.

Figure 10 shown the permeate flux measurement for different autoflush interval (5-60 min) at LSI value 1.5. The same tendency observed, First was in the interval 5-

15 min, the permeate flux relatively stable in 35-36 L/h m<sup>2</sup>. In contract, the second tendency was in the interval 20-60 min, permeate flux only reach 29-30 L/h m<sup>2</sup>. The monitoring result of  $Ca^{2+}$  concentration also shown similar pattern.  $Ca^{2+}$  concentration start decreasing at the interval 20 min for about 19%.

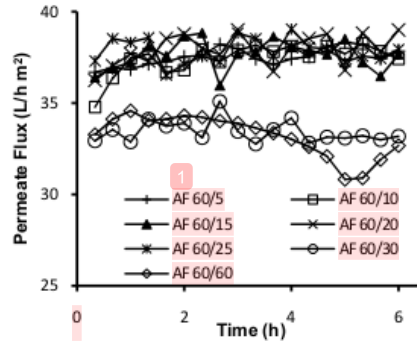


Figure 9. Permeate flux curves in experiments with intermittent autoflush method; LSI=1.2; 60 sec duration time in various interval (5-60 min)

AF = intermittent autoflush parameter combination (duration (sec)/ (interval (min)))

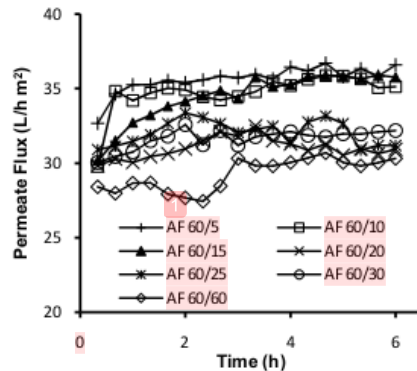


Figure 10. Permeate flux curves in experiments with intermittent autoflush method; LSI=1.5; 60 sec duration time various interval (5-60 min)

The permeate flux decline and decreasing of  $Ca^{2+}$  concentration in the feed water in specific time may be related to the rate of polarization concentration that happen in the membrane system and induction time of calcium carbonate. Such as for LSI 0.8 and 1.2 flux decline and  $Ca^{2+}$  concentration start

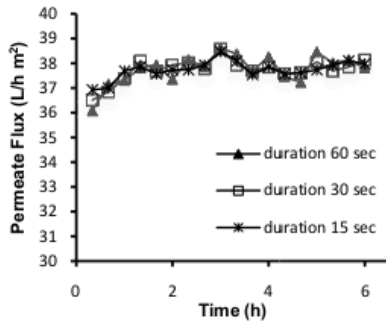
decreasing at the time of 30 min operation time and for LSI 1.5 at the time of 20 min operation time. But these relationships need to be observed and prove in the next experiment.

These phenomena indicate that autoflush parameter such as interval was able to stabilizing and improving performance of household reverse osmosis systems at some specific level.

**Trend of permeate flux in various duration in the system with intermittent autoflush method**

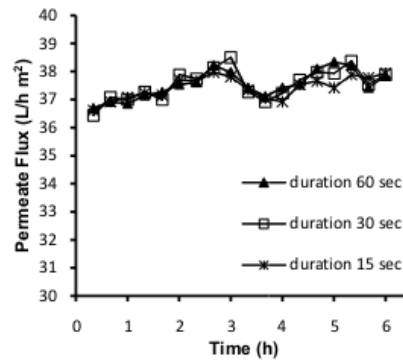
In other experiment which already conducted, conclude that interval and duration of intermittent autoflush method were effected the permeate flux stabilization (Shon et al., 2007). But how far the duration influencing the permeate flux still not available in the literature. Duration is the time when autoflush process conducted. The same assessment was made in the terms of monitoring of the permeate flux.

Figure 11, 12 and 13 presents the permeate flux measurement for different autoflush duration (60, 30 and 15 sec) at LSI value 0.8; 1.2; 1.5 and interval time 5 min. All curves were showing the similar phenomena.

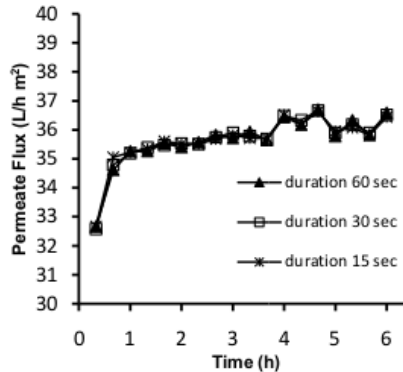


**Figure 11. Permeate flux curves in experiments with intermittent autoflush method; LSI=0.8; 5 min interval time in various duration time (60-15 sec)**

The experiment which used feed water with LSI value 0.8, permeate flux was in the range of 37-38 L/h m<sup>2</sup> in duration time 60 sec, 30 sec and also in 15 sec. The same was happen in the experiment which used feed water with LSI value 1.2. For LSI=1.5 permeate flux was around 35-36 L/h m<sup>2</sup>, applied the same for all duration time.



**Figure 12. Permeate flux curves in experiments with intermittent autoflush method; LSI=1.2; 5 min interval time in various duration time (60-15 sec)**



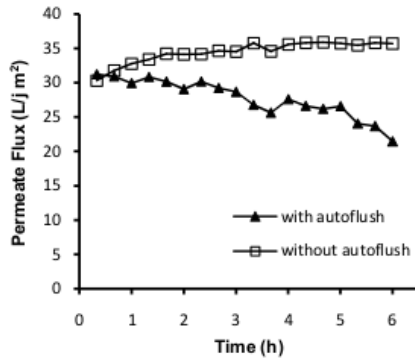
**Figure 13. Permeate flux curves in experiments with intermittent autoflush method; LSI=1.5; 5 min interval time in various duration time (60-15 sec)**

From the experimental result, the flushing process to depolarized concentration in the membrane and replace membrane which full of concentrate solution that lead to scaling with feed water solution completed at duration time 60, 30 and even 15 sec. More specifically in this experiment, it can be stated that reduction of 15-45 sec duration time to duration time 60 sec still can stabilizing the permeate flux and not showing the significant influence to the permeate flux.

**System with and without intermittent autoflush method**

Taking data from previous experiments, the trend of permeate flux curve in the system with and without intermittent

autoflush method can be compared as shown in the Figure 14.



**Figure 14. Permeate flux curves in experiments with and without intermittent autoflush method; LSI=1.5**

Figure 14 definitely supported the statement that intermittent autoflush method is able to stabilizing and improving the performance of household RO membrane system effectively, even in the specific level.

Applying intermittent autoflush method in the household RO membrane system have consequence to removed additional feed water that used for flushing process as drain. But this consequence economically saved, since in household RO membrane system operation, permeate and drain level ratio 1:1 maximum (Anonym, 2004). This is also means for producing 1L/min great quality of water, 1L/min drain has to be removed from the system. Additional removal of feed water that used for flushing process only contributes 1% to the drain volume.

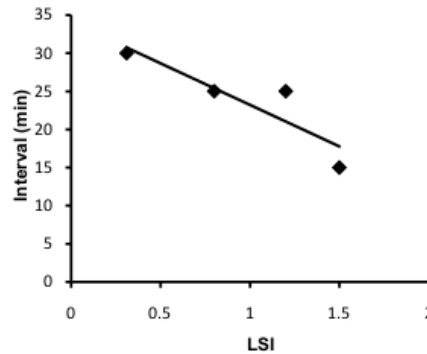
**Determination of the best autoflush interval for various LSI values**

This study was also carried out to determine the best autoflush interval for various LSI values which presented the characteristic of feed water. In the previous discussion already stated that autoflush parameter such as interval was able to stabilizing and improving performance of household reverse osmosis systems at some specific level only.

Data from previous section has shown the best autoflush interval for various LSI values. The data already mentioned in Table 4 and depicted in Figure 15.

**Table 4. The best interval for various LSI values**

LSI	Best interval (min)
0.31	30
0.8	25
1.2	25
1.5	25



**Figure 15. Interval curves in various LSI values; household RO membrane system 5 kg/cm² operation pressure**

In determining the best autoflush interval for various LSI values, the trend line was described in the linier approach. The linier trend line was used basically from hypothesis that there are limitation where on the one specific LSI value, intermittent autoflush method cannot stabilizing and improving the performance of household RO membrane system. But in this experiment critical LSI value not yet determine.

Equation interval (Int) = (-10,899 LSI) + 34,132 can be used to determine the best autoflush interval for various LSI values in household RO membrane system 5 kg/cm² operation pressure application.

**4. Conclusion**

CaCO<sub>3</sub> scale formation in the household RO membrane system has been investigated. The permeate flux start to decline and Ca<sup>2+</sup> concentration start to decrease in between of feed water with LSI value 0.31-0.8, indicates that the ions were polarized in the membrane surface to form scale and covering the membrane surface which lead to reduction of the available filtration area.

Application of intermittent autoflush method in the household RO membrane system also investigated in terms of influence of interval and duration time. Data from experiments show that autoflush parameter

such as interval was able to stabilizing and improving performance of household reverse osmosis systems at some specific level. Equation interval (Int) = (-10,899 LSI) + 34,132 can be used to determine the best autoflush interval for various LSI values in household RO membrane system 5 kg/cm<sup>2</sup> operation pressure application. Other parameter such as duration or the flushing process to depolarized concentration completed at duration time 60 sec, 30 sec and even 15 sec. Or it can be stated that reduction of 15-45 sec duration time to duration time 60 sec still can stabilizing the permeate flux and not showing the significant influence to the permeate flux.



# Improving Performance Of Low Pressure Reverse Osmosis Systems By Intermittent Autoflushing

## ORIGINALITY REPORT

19%

SIMILARITY INDEX

11%

INTERNET SOURCES

9%

PUBLICATIONS

0%

STUDENT PAPERS

## PRIMARY SOURCES

1

[eprints.undip.ac.id](http://eprints.undip.ac.id)

Internet Source

11%

2

C TZOTZI, T PAHIADAKI, S YIANTSIOS, A KARABELAS, N ANDRITSOS. "A study of CaCO<sub>3</sub> scale formation and inhibition in RO and NF membrane processes", Journal of Membrane Science, 2007

Publication

7%

3

Mahdieh Asadollahi, Dariush Bastani, Seyyed Abbas Musavi. "Enhancement of surface properties and performance of reverse osmosis membranes after surface modification: A review", Desalination, 2017

Publication

<1%

4

Lee, S.. "Control of scale formation in reverse osmosis by membrane rotation", Desalination, 20030615

Publication

<1%

5

H. Garbacz, M. Lewandowska. "Microstructural

changes during oxidation of titanium alloys",  
Materials Chemistry and Physics, 2003

Publication

<1%

---

6

[www.cheric.org](http://www.cheric.org)

Internet Source

<1%

---

Exclude quotes Off

Exclude matches Off

Exclude bibliography Off

# Improving Performance Of Low Pressure Reverse Osmosis Systems By Intermittent Autoflushing

---

## GRADEMARK REPORT

---

FINAL GRADE

**/0**

GENERAL COMMENTS

**Instructor**

---

PAGE 1

---

PAGE 2

---

PAGE 3

---

PAGE 4

---

PAGE 5

---

PAGE 6

---

PAGE 7

---

PAGE 8

---

PAGE 9

---

PAGE 10

---