



Proceedings of the
4th Biennale

ICIAP

INTERNATIONAL CONFERENCE ON
INDONESIAN ARCHITECTURE AND PLANNING

DESIGN AND PLANNING
IN THE **DISRUPTIVE ERA**

26-27 JULY 2018, YOGYAKARTA

Dept. of Architecture and Planning, Universitas Gadjah Mada

4th Biennale

ICIAP

International Conference on Indonesian Architecture and Planning

Design and Planning in the Disruptive Era

Yogyakarta, Indonesia

July 26-27, 2018

Department of Architecture and Planning,
Faculty of Engineering, Universitas Gadjah Mada

**The 4th BIENNALE INTERNATIONAL CONFERENCE ON INDONESIAN
ARCHITECTURE AND PLANNING**

Proceedings of the international conference held in Yogyakarta Between 26-
27 of July 2018

Editors : Doddy Aditya Iskandar, MeRSA., Ph.D.
Odilia Renaningtyas M., ST., MA(UD)
Rendy Bayu Aditya, S.T., MUP

First Edition | online distribution, September 2018

21 x 29.7 cm; 830 pages

ISBN: 978-97998815-8-8

All rights reserved

Published by Department of Architecture and Planning, Faculty of Engineering,
Gadjah Mada University

Apart from brief citations with reference, this publication may not be reproduced by any means without
the permission of the publisher.

Authors are responsible for the quality of the language in their papers.

Organizing Committee

East Wing Building Department of Architecture and Planning

Jalan Grafika No.2 Kampus UGM Yogyakarta 55281 INDONESIA

Phone : +62 274 580092

Fax : +62 274 580583

Email : iciap.ft@ugm.ac.id

4th Biennale

ICIAP

International Conference on Indonesian Architecture and Planning

Design and Planning in the Disruptive Era

Yogyakarta, Indonesia

July 26-27, 2018

Steering Committee

Prof. Ir. Bakti Setiawan, MA, Ph.D
Prof. Wiendu Nuryanti, M. Arch, Ph. D
Dr. Ir. Achmad Sarwadi, M.Eng
Ir. Ikaputra, M.Eng, Ph.D
M. Sani Roychansyah, ST, M.Eng, D.Eng

Scientific Committee

Prof. Yoshiaki Kubota (University of Toyama, Japan)
Prof. Shuenn-Ren Liou (National Cheng Kung University, Taiwan)
Dr. Ing. Heru W. Poerbo (Institut Teknologi Bandung, Indonesia)
Evawani Ellisa, Ph.D (Universitas Indonesia, Indonesia)
Syam Rachma Marcilia, ST., M.Eng., Ph.D. (Universitas Gadjah Mada, Indonesia)
Deva Fosterharoldas Swasto, S.T., M.Sc (Universitas Gadjah Mada, Indonesia)
Dr. Dwita Hadi Rahmi (Universitas Gadjah Mada, Indonesia)
Dr. Laretna Trisnantari Adishakti (Universitas Gadjah Mada, Indonesia)
Dr. Eng. Agus Hariyadi, S.T., M.Sc (Universitas Gadjah Mada, Indonesia)
Dr. Eng. Nedyomukti Imam Syafii, ST., M.Sc (Universitas Gadjah Mada, Indonesia)
Irsyad Adhi Waskita H., ST., M.Sc (Universitas Gadjah Mada, Indonesia)

Organizing Committee

Doddy Aditya Iskandar, MeRSA., Ph.D.
Dr. Dyah Titisari Widyastuti, ST., MUDD.
Dr. Yori Herwangi, ST., MURP
Atrida Hadiani, ST., M.Sc., Ph.D.
Maria Ariadne Dewi Wulansari, ST., MT
Odilia Renaningtyas Manifesty, ST., MA(UD)
Rendy Bayu Aditya, ST., MUP.
Alfiandy Ahmad Yunus, ST

FOREWORD

Recent trends indicate the dramatic and significant shift from the conventional approach of seeing things for granted to 'disruptive innovation.' It splintered into many aspects of individuals and communities, including planning and design. Not only does disruptive innovation become a cornerstone in current academic discourses, it also calls for new approaches in observing, critiquing and analyzing our contemporary issues and problems. As such, disruptive innovation deconstructs our comfort zone and engages us in a new territory.

The 4th International Conference on Indonesian Architecture and Planning (ICIAP) uses these ideas as backdrop for critically examining the effect of disruptive innovation in planning and design, including but not limited to the application of it and policy responses. At the same time, the conference also considers topics related to globalization and the way it stimulates creative disruption in planning and design. We encourage papers that consider disruptive innovation as another form of machine capable to co-opt various actors and institutions in disseminating certain social, economic and cultural values, planning and design as a form of resistance against the commodification process diffused across space and social groups and is systematically embedded in the structural power relations of innovation politics, and historical assessment of built environment as a form of disruptive innovation.

Dr. Ir. Ahmad Sarwadi, M.Eng
Head of Department Architecture and Planning, Faculty of Engineering,
Universitas Gadjah Mada

INTRODUCTION

First of all, let us express our thanks to God the Almighty who gave all of us a chance to meet again in this ICIAP 2018. The fourth International Conference on Indonesia Architecture and Planning (ICIAP) is part of a biennale international program at the Department of Architecture and Planning, Faculty of Engineering, Universitas Gadjah Mada. With the focus on the field of architecture and planning subject/discourse in Indonesia, the conference is expected to be able to capture ideas, concepts, methods, or practices that evolve continuously in this field.

There are three conferences was held previously, the first ICIAP in 2012 was bringing the theme of *"Better Space Better Living"*, while the second ICIAP in 2014 with theme *"Space for The Next Generation"*, and the latest ICIAP was in 2016 with *"Inclusive Space, Enriching Culture"*. The recent trends indicate the dramatic and significant shift from the conventional approach of seeing things for granted to 'disruptive innovation.' It splintered into many aspects of individuals and communities, including planning and design. Not only does disruptive innovation become a cornerstone in current academic discourses, it also calls for new approaches in observing, critiquing and analyzing our contemporary issues and problems. As such, disruptive innovation deconstructs our comfort zone and engages us in a new territory. By this regard, ICIAP 2018 set the theme *"Planning and Design in Disruptive Era"*.

In the fourth ICIAP, the conference offers main plenary session, panel discussions, and excursion to various architectural and heritage sites. We also had the opportunity to invite ten speakers coming from diverse cultural background that come to share their specialties and experience from broader multi-dimensional aspects of these issues. This year, we had received over 100 abstracts or full papers that have been submitted to the conference. After the screening process, there are 53 papers that have been reviewed and eligible to participate in this event. From various perspectives, these papers have been grouped in several contexts, such as design, urban, traditional and contemporary architecture, educational, socio-cultural, history-heritage, disaster resilient, and green environment contexts.

In this opportunity, we would like to express many thanks to everyone, especially all the faculties, staffs, students, as well as the study programs at the Department of Architecture and Planning Faculty of Engineering, Universitas Gadjah Mada for their tireless supports and positive participations. We are also indebted to all of speakers who have dedicated time to share their invaluable knowledge in this forum. Of course, sincerely we send our high appreciation to the entire participants of ICIAP, from the authors, the presenters, as well as the observers who have been during two days conference gave a positive academic atmosphere through related discussions. Last but not least, the highest honors is sent to our committee

Doddy Aditya Iskandar, MeRSA, S.T., MCP., Ph.D
Chairperson Organizing Committee of ICIAP 2018

CONTENT

Cover Page	i
Committee	iii
Foreword	iv
Introduction	v
Content	vi

TOPIC 1: Critical Assessment on the Idea of ‘Disruptive’ and ‘Innovation’

The Commodification of Nusantara Architecture in Indonesian Tourism: A Pathway to Culture Preservation or Universalism? <i>Diah Asih Purwaningrum and Athina Ardhyanto</i>	2
Designing Integrated Neighbourhood Market Place as A Strategy of Public Market Revitalization <i>Susy Prajna Sari and Agus S. Ekomadyo</i>	9
Co-Housing In Developing Country As Strategies For Living Space And Social Needs <i>Rositha Mujica, Alexander Rani Suryandono, Hafiz Nurrahman and Treza Chandra Julian</i>	16
Precast System for Affordable Landed Housing in Indonesia <i>Hafidz Al Mubarak and Andrian Eka Lucianto</i>	23
From Angkringan to Coworking Space: The Emergence of New Social Spaces for Young People <i>Odilia Renaningtyas Manifesty and Nabila Afif</i>	30
The Role of Architects in a Multi-client Community Program: The Case of Semarang <i>Ismet Belgawan Harun, Sri Suryani and Stirena Rossy Tamariska</i>	37
The Implementation Of MOOC Parametric Design As A Teaching Pedagogy For Architecture Student <i>Agus Hariyadi and Nabila Afif</i>	45
Back to Simple- Disruptive Methods for the Improvement of the Building Performance of the Museum Affandi <i>Ulrike Herbig, Tina Tezarek, Ulrich Pont and Ardeshir Mahdavi</i>	52

TOPIC 2: Diffusion of (Disruptive) Innovation in Built Environment

Land Requirements of High-Rise Building in Surabaya City: A Disruptive Review toward Sustainable Urban Development <i>Dian Rahmawati and Kesumaning Dyah Larasati</i>	62
Ride-Sharing Platform's Effect on the Transportation Movement Pattern in Daerah Istimewa Yogyakarta <i>Ardina Putri Rahtama, Lanthika Atianta and Dwi Aditya Indra Lesmana</i>	70
Malay Wood Carving: The Godang House at Koto Sentajo <i>Gun Faisal, Yohannes Firzal and Indra Kuswoyo</i>	77
Emerging Algorithm Design Approach for Constructing Complex Form with Low Skilled Labor Context <i>Rakhmat Fitrianto Aditra and Andry Widjowijatnoko</i>	85
The Implementation of Text Mining on the Study of the Perception of Urban Area <i>Anugrah Sabdono Sudarsono, Ni Putu Amanda Nitidara, Joko Sarwono, Widjaja Martokusumo, Heru W. Poerbo, Michael Djimantoro, Amanda Arifiana and Feysa A. Poetry</i>	91
Aksiku.Bdg: Using Mobile Games to Promote the Youth as Local Change Maker <i>Dewi Shinta Wulan Dini Soebari Putri and Teti Armiami Argo</i>	96
Study of the Impact of Application-Based Ojek Presence on Urban Spaces in CBD Area Jakarta <i>T. M. Aziz Soelaiman, R. Winton Danardi and Adrianto</i>	104
Adaptable Space: Transformation of Outdoor Space and Streets to Facilitate Residents' Needs Post Disaster Settlement <i>Syam Rachma Marcillia</i>	112
Batik Pattern Panel Performance Of Solar Radiation Reduction <i>Alexander Suryandono, Agus Hariyadi and Hiroatsu Fukuda</i>	119

TOPIC 3: Environmental Issues, Sustainability

Redesign of Melong Area Based on Flood Resilient Urban Design Principles <i>Azka Taujih Robbani, Widjaja Martokusumo and Mochamad Prasetyo Effendi Yasin</i>	126
Thermal Comfort Perception of Public Space (Case Study: Zero Kilometer Point, Yogyakarta) <i>Christian Nindyaputra Octarino and Yohanes Satyayoga Raniasta</i>	133
Analysis of Urban Structure Parameters Based on the Climate-Sensitive Design in the Cultural Heritage Site Of Rajawali Surabaya <i>Dini Faza Illiyin, Widjaja Martokusumo and Mochamad Donny Koerniawan</i>	140

Thermal Comfort Investigation in Urban Heat Island Area, Open High-rise Building and Compact Low-rise Building Typology Study Case in Surabaya <i>Kety Intana Janesonia, Woerjantari Kartidjo Soedarsono, Mochammad Donny Koerniawan and Astri Isnaini Dewi</i>	147
Optimization Of Spatial Configuration To Make Thermal Comfort Condition In Fort Oranje Public Space In Ternate City <i>Asri A Muhammad, Firdawaty Marasabessy, Arif Kusumawanto and Ardhya Nareswari</i>	155
The Bioregional Planning as Ecology Conservation for Sustainable Living: Jakarta as the Case Study <i>Ayu Larasati</i>	163
Modeling of Urban Heat Island in Surabaya City <i>Purba Karlengie, Rijanta and Doddy Iskandar</i>	172
Prospect of Sustainable Slum Upgrading in The Peatlands of Kuala Tungkal <i>Nur Aini, Bakti Setiawan and Retno Widodo Dwi Pramono</i>	180
4 Different Time Segments Of Community Adaptation Strategies In Tambak Lorok, North Semarang: 23 Years Dealing With Rob <i>Nadhila Shabrina, Agam Marsoyo and Deva Fosterharoldas</i>	187
Streets, A Space To Maintain Neighborhood Associations (Case Study : Slum Area Of Semanggi, Surakarta) <i>Dea Karina Putri, Avi Marlina and Ofita Purwani</i>	193
Colors of the Earth: Enhancing the Sustainability of Earth-based Local Materials <i>Paramita Atmodiwirjo, Anak Agung Ayu Suci Warakanyaka and Yandi Andri Yatmo</i>	200
Cross-cultural Phenomenon: Defining Balinese Traditional Architecture in Chinese Temple Architecture <i>Freddy Hendrawan and Ardina Susanti</i>	206
Span Construction of Bamboo Floor <i>Eugenius Pradipto and Swari Dewanti Hamastuti</i>	212

TOPIC 4: Globalization and Resilience

The Correlation between Urban Compactness and Urban Health in <i>Kawasan Perkotaan Yogyakarta</i> <i>Fatima Putri Prativi and M Sani Roychansyah</i>	223
From Manual to Digital, the Importance of Social Media in Promoting the Artwork of Architectural Design in Disruption Era <i>Ngakan Ketut Acwin Dwijendra and Made Vairagya Yogantari</i>	231
Regional Resilience Index of Climate Change in the Special Region of Yogyakarta <i>Faricha Kurniadhini, Amar Ma'Ruf Zarkawi and Sumartini</i>	239

The Effect of Slum Upgrading Programs on Resilience of Riverside Settlement in Banjarmasin City	245
<i>Yunisari Dahliani, Bakti Setiawan and Retno Widodo Dwi Pramono</i>	

TOPIC 5: Governance, Regionalism, Management

Study on Inter-Agency Relationship under One Map Policy: Does Open Data Policy Enhance the Growth of Innovations or Disruption?	254
<i>Adipandang Yudono, Chintia Dewi and Mulyanto Darmawan</i>	
Conceptual Framework of Decision Support System (DSS) for Visual Quality Evaluation of Urban Streetscape Based on Public Preferences	263
<i>Herry Santosa, Jenny Ernawati and Lisa Dwi Wulandari</i>	
Learning from Banyuwangi Poverty Reduction Strategy Innovation in Gerbang Hebat Program of Semarang City Government	271
<i>Lillah Haulah and Landung Esariti</i>	
The Role of Tourism Sector to Regional Economic In the Disruptive Era, Case Special Region of Yogyakarta	278
<i>Riswandha Risang Aji, Retno Widodo Dwi Pramono and Dwita Hadi Rahmi</i>	
Acceleration of Land Acquisition Process to Support Infrastructure Development	284
<i>Ganang Prakoso</i>	

TOPIC 6: Historic Preservation, Space and Place

Adjusting the Past for the Future within the Era of Disruption. Authenticity and Integrity Revisited	293
<i>Widjaja Martokusumo, Arif Sarwo Wibowo and Athina Ardhyanto</i>	
Reading Social Media Data Using Place Attachment Approach for Developing Malioboro District	300
<i>Sushardjanti Felasari, Nimas Sekarlangit, Sinta Dewi and Djoko Setyohadi</i>	
Designing Public Library as an Urban Community Place	
<i>Adinda Yuwono and Agus Ekomadyo</i>	
Evoking Traditions and Creating Uniqueness: Traditional Settlements and Tourism in Disruptive Era	308
<i>I Dewa Gede Agung Diasana Putra</i>	
The Transformation of Shape Imagery of Gorga in Toba Batak Houses	316
<i>Yulianto</i>	

The Perception of Tourist toward the Quality Product of Tourism Destination: Fort Rotterdam, Makassar <i>Gusniyati Buhari, Diananta Pramitasari and Ahmad Saifullah</i>	324
Trilogy Masjid, Pesareyan, and Kauman as Spatial Core and Identity of Dongkelan Kauman Settlements <i>Lutfi Setianingrum, Sudaryono Sastrosasmito and M. Sani Roychansyah</i>	331
The Role Quality of Place to Support People's Capability in Cultural- Creative Tourism Village <i>Zilda Dona Okta Permata, Retno Widodo D. Pramono</i>	340
Community Disruption And Adaptation: The Role Of The Street As A Social Place In Informal Settlements In The Era Of Motorised Transport <i>Jimly Al Faraby</i>	348
The Form and Transformation of the Church by Mangunwijaya <i>Sotaro Kikuchi and Dimas Ikaputra</i>	357
Transformation of Balinese traditional village architecture: The case of Tenganan Pageringsingan <i>Dwita Hadi Rahmi</i>	364

TOPIC 7: Historical Perspectives on Cities, Urban Areas

Study Sustainability Aspect of Colonial Building as Adaptation of Tropical Climate in Indonesia (Case study: Pasar Johar Semarang and Pasar Gede Surakarta) <i>Dindha Nirmalasari and Suhendri Suhendri</i>	372
Potential of Semarang Old Town as Tourist District <i>Mia Amelia Suryani and Ikaputra</i>	378
Revitalization of Chinese Settlement Area in Lasem Jawa Tengah <i>Stefy Prasasti Anggraini, Laretna T. Adhisakti and Dwita Hadi Rahmi</i>	387
Urban Development and Heritage Conservation towards Integrated Conservation Planning: case of The Historic City of Medan <i>Isnen Fitri, Amy Marisa and Ratna</i>	393
Control Implementation in Preservation of Heritage Buildings in Yogyakarta City, Case Study: Demolition of Vocational High School of Taman Ibu and House of Tjan Bian Thiong <i>Risa Risdiasari, Deva Fosterharoldas Swasto and Leksono Probosubanu</i>	400

TOPIC 8: Housing, Neighborhoods, Community Development

Low-Income Housing Demand in Jakarta Peri-Urban Areas <i>Diva Teguh Respati and Komara Djaja</i>	408
Neighborhood Space Design for Candi Indah Residential In Yogyakarta <i>Gabriella Natalingrum Nugrahanto, Ahmad Sarwadi and Didik Kristiadi</i>	419
Physical Element Of Wayfinding Factor At Nogotirto Housing, Gamping, Sleman, Yogyakarta <i>Reno Riandru, Prof Ir Yoyok Wahyu Subroto, Syam Rachma Marcilia, ST., M.Eng., Ph.D</i>	425
Settlement transformation: Dealing with Unplanned Development Settlement in Cirata Reservoir Area <i>Agustinus Adib Abadi, Titus Adi Kurniawan and Anastasia Astrid Ronaully</i>	432
Ethnodevelopment In The Context Of Special Autonomy In Papua Province <i>Yannice Sitorus, Arief Rosyidie, Suhirman and Hastu Prabatmodjo</i>	438
Participatory Design and Community Empowerment in Fashion Village Lab, Cigondewah, Indonesia <i>Dewi Shinta Soebari Putri and Aji Bima Amalsyah</i>	445
Diverting the Current: Cultural Trajectories of River Dwelling in Jakarta Metropolis <i>Sri Suryani and Wahyu Kusuma Astuti</i>	452
Spatial Characteristic Urban Residential Area in Military City: Stability Vs Uncertainty. The Case Study of Cimahi <i>Agustinus Adib Abadi, Syaiful Achmad Lathif, Stirena Rossy Tamariska and Aldissain Jurizat</i>	458
Decoding Indonesian Millennials Traits as Variables In Assessing Millennials Living Preferences In Apartment <i>Laras Primasari and Angela Christysonia Tampubolon</i>	464
Evoking Traditions and Creating Uniqueness: Traditional Settlements and Tourism in Disruptive Era <i>I Dewa Gede Agung Diasana Putra</i>	471
Evaluating the factors of millennials' housing choice in Jakarta Metropolitan Region <i>Atika Almira, Fathina Izmi Nugrahanti and Dibja Kusyala</i>	479
Empowering the Poor in Urban Kampong Settlements by Intensifying Stakeholder Collaboration in Creating Development Plan <i>Paulus Bawole, Haryati Sutanto and Winarna –</i>	487
The Role of Apartment Growth in Bekasi to The Formation of Metropolitan Spatial Structure <i>Desy Novita Sari and Retno Widodo Dwi Pramono</i>	494
Characteristics of Social Space around PT. Indah Kiat Pulp and Paper Perawang Mill, Siak Regency	500

Rizki Zarli Humairah, Rijanta and Doddy Aditya Iskandar

Settlement Vulnerability Aspect in Slum Upgrading Program of Ambon City 508
Wilhelmina Musila, Retno Widodo Dwi Pramono and Dwita Hadi Rahmi

Model of Women's Participation in Implementation of Slum Upgrading Program at Kebonsari Village, Pasuruan City 515
Aninda Yulian Pritasari, Bakti Setiawan and Retno Widodo Dwi Pramono

A Study on Spatial Characteristics of Home-Based Enterprises's Kampung Kota. Case Study: Squatter Dwelling Kampung Kenteng, Semanggi, Surakarta 522
Kusumaningdyah Handayani and Amalia Ji Darmastuti

A Study on Circulation-Usage Alteration at Kampung Pakuncen, Gampingan, Yogyakarta 532
Agustinus Wisnu Wardana, Rendra Kusuma Berlianto and Kusumaningdyah Nurul Handayani

Satu Simbah Concept As The Foundation Of Kampung Morisan 543
Cut Khusnul Khotimah, Sudaryono Sastrosasmito and M. Sani Roychansyah

TOPIC 9: Infrastructure Networks, Transport, Basic Urban Services

Current Situation and Problem Solving of Intersection Saturated in Urban Street 552
Imma Widyawati Agustin

Problems in Improving the Road's Level of Service in Urban Road 560
Septiana Hariyani and Imma Widyawati Agustin

Intermoda As Container Transportation Alternative in Indonesia 568
Donie Aulia, Ibnu Syabri, Puspita Dirgahayani and Pradono Pradono

Design Guideline for Urban Settlement along The Railway Line on Kebonharjo Semarang based on The Noise Impact of Railway Line Crossing 576
Isti Nugroho and Dyah Titisari Widyastuti

The Impact of the Purbaleunyi Toll Road towards Socio-Economic Development In West Java 583
Zeis Zultaqawa, Benny Alexandri and Donie Aulia

The Readiness People of Semarang City Toward A Model For Building License (IMB) Online 588
Ragil Haryanto and Bagus Nuari Priambudi

Controlling Core Urbanism In The Corridor Of Surabaya – Sidoarjo Using A Road's Level of Service Approach 595
Budi Sugiarto Waloejo, Fauzan Roziqin and Imma Widyawati Agustin

The Role of Apartment Growth in Bekasi to the Formation of Metropolitan Spatial Structure <i>Desy Novita Sari and Retno Widodo Dwi Pramono</i>	604
Evaluating Brawijaya Terminal's service performance using Importance Performance Analysis <i>Dadang Meru Utomo, Budi Sugiarto Waloeja and Refi Ardianata</i>	611
Sustainability Assessment of Engineering Faculty UGM Complex through Floor Area Ratio and Operational Energy Analysis Using Urban Modeling Interface Simulation <i>Arif Kusumawanto, Fadhillia Tri Nugrahaini and Mega Setyowati</i>	617

TOPIC 10: Land use, Growth Management, Development, Planning

The Impact Of Land Use Regulation On Land Values: Case Study Of Ngaglik District, Indonesia <i>A Yunastiawan Eka Pramana and Datuk Ary Adriansyah Samsura</i>	625
Colonial City Pattern In Indonesia Using Depth Calculation: Introduction To Study Ratio On Master Plan Using DepthMapX <i>Pindo Tutuko, Nurhamdoko Bonifacius and Dani Yuniawan</i>	634
Socio-Spatial Disintegration: The Influence Of Semarang-Solo Toll Road To Local-Dis-Connection (Case Study: Kandangan Village, Bawen, Indonesia) <i>Susiyowati Indah Ayuni and S Sariffuddin</i>	642
Territorial Ordering Program As A Basis For Designing An Oceanic Fishing Port <i>Rafi Mentari, Paramita Atmodiwirjo and Yandi Andri Yatmo</i>	650
Transactive Planning and Transfer Knowledge between Transfer Agents within Local Development <i>Muhammad Taufiq, Benedictus Kombaitan and Suhirman</i>	656
Growing Sprawl: Leapfrog Development In Kendari From 2000 – 2016 <i>Fikrani Asha and Agam Marsoyo</i>	663
Transformation of Space in Balige, Province of Sumatera Utara, Indonesia <i>Morida Siagi</i>	669

TOPIC 11: Theorizing Local and Regional Disruptive Innovation

Connecting Global Market and Local Potential through Designing Heritage Port. Case: International Cruise Port in Probolinggo <i>Addina Nur Amalia and Agus S. Ekomadyo</i>	678
Theorizing Inspiration: Learning from Creative Process of Indonesian Architects <i>Tulus Widiarso, Baskoro Tedjo and Himasari Hanan</i>	686

Maintaining Local Wisdom In Home Base Hospitality Case Study: Bed And Breakfast In Yogyakarta <i>Wulan Maharani, Ofita Purwani, Titis Pitana and Hardiyati</i>	694
---	-----

TOPIC 12: Urban Design, Urban Architecture

Visual Image of Physical Traditional Elements as an Identity of Local Architecture in Penglipuran Village Bali <i>Agus S Sadana, Ashri Prawesthi D and Cynthia Puspitasari</i>	702
Study on the Quality of Streetscape in Pasar Gede Area, Surakarta <i>Tri Palupi and Dyah Titisari Widyastuti</i>	708
Measuring Cultural Vitality Level as a Basis for Development Guidance of Chinese Settlement in Karangturi, Lasem <i>Yohana Aneke and M. Sani Roychansyah</i>	714
Study on Walkability of University Campus Area, Case: Demangan Baru Yogyakarta <i>Muhamad Faisal Paani and Dyah Titisari Widyastuti</i>	721
Study On Livability Quality Of Public Open Space In Banjir Kanal Barat Normalization Area Involving The Role Of Visitors In Facing Disruptive Era <i>Dhipo Achmad Hartono and M. Sani Roychansyah</i>	726
Correlation between Urban Compactness Level and Urban Creativity Level In Yogyakarta City <i>May Larasati and M. Sani Roychansyah</i>	731
The Role Of Transition And Thresholds In Creating Public Space Quality <i>Julia Dewi and Martin Pratama</i>	738
Sight and Sound in Designing the Urban Space <i>Heru Poerbo, Widjaja Martokusumo and Anugrah Sabdonu Sudarsono</i>	745
The Impact of Langsa Townsquare Existence for Langsa Central Business District Vitality <i>Almira Raissa, Wahyu Utami and Amy Marisa</i>	752
Revealing Significant but Unpredictable Domestic Qualities of Urban Architecture for Children by Framing Method <i>Ajifah Karimah, Paramita Atmodiwirjo and Yandi Andri Yatmo</i>	758
The Old Urban Spatial of Banda Aceh through the Historical Approach <i>Marisa Hajrina, Wahyu Utami and Imam Faisal Pane</i>	765

Re-imagining Historical Identity and Urban Culture in Alun-Alun Malang using Disruptive-Revival Innovation's Design Method, to Establish New Identity of Urban Space and Revitalization of Public Space	773
<i>Firmansyah and Ira Prayuni</i>	
The Incompatibility of Window Placement to the User's Seeing Experience: A Case Study in Healthcare Environment	781
<i>Maria Myron Charlotta Sengke, Yandi Andri Yatmo and Paramita Atmodiwirjo</i>	
Correlation between Urban Compactness Level And Urban Safety Level In Yogyakarta City	789
<i>Riana Desi Putri Ratmawati and M.Sani Roychansyah</i>	

TOPIC 13: Urban Disaster Planning, Management, Cities and National Security

Factors Affecting Vulnerability to Flood Risk (Case Study: Flood Risk In Balikpapan City)	799
<i>Ariyaningsih Ariyaningsih</i>	
Land Development Control Instruments in Surabaya: How is the Relevance in Making a Resilient City	806
<i>Kesumaning Dyah Larasati and Eko Budi Santoso</i>	
Concept of Spatial Planning To Reduce Earthquake Risk in Aceh Province	813
<i>Rizki Kirana Yuniartanti, Tiara Sartika Worowirasmu and Bintang Septiarani</i>	
Social and Economic Measurement of Urban Kampung Resilience	823
<i>Imelda Irmawati Damanik, Bakti Setiawan, M. Sani Roychansyah and Sunyoto Usman</i>	

4th Biennale

ICIAP

International Conference on Indonesian Architecture and Planning

Design and Planning in the Disruptive Era

Yogyakarta, Indonesia

July 26-27, 2018

TOPIC 9: Infrastructure Networks, Transport, Basic Urban Services

The Readiness People of Semarang City Toward a Model Online Single Submission for Building License (IMB)

Ragil Haryanto¹, Bagus Nuari Priambudi²

¹First Author, Diponegoro University, Faculty of Engineering, Department of Urban and Regional Planning, Prof. Soedarto, SH Street, Tembalang, Semarang and 50275, Indonesia

²Second Author, Diponegoro University, Faculty of Engineering, Department of Urban and Regional Planning, Prof. Soedarto, SH Street, Tembalang, Semarang and 50275, Indonesia

E-mail: ragil.haryanto@pwk.undip.ac.id

Abstract. E-government is application one door integrated service to facilitate people get a licensing in a many sector without washing time come to the office. This application can process data and information fast and accurate. Semarang city is one example already now applicate this system since 2015. This system is can be assessed effective and efficient make shortcut for public service framework especially in licensing sector. In 2017, Government Semarang City builds a new innovation for public service application based on website to get building licensing (IMB). This application planed finished in 2019, and perhaps can be fast and accurate to help people of Semarang City get a building licensing (IMB). Aim of this research to study Readiness People of Semarang City against a Model for Online Single Submission Building License (IMB). These researche use a quantitative method for collecting data and information. A subject this research is individuals or group which are in the process get a building permit (IMB) and people who a build website for permit IMB online. Result this research that people of semarang city already toward to Model for Online Single Submission Building License (IMB). But, this readiness must be support with good program and good people to manage overall.

1. Introduction

Planning information systems in public services in this current era, can be regarded as a nuisance to the surrounding environment. Innovation of the system in analogikan a market competition that can lead to existing systems and develop previously can be eliminated. This is in accordance with what was delivered by Clayton M. Christensen in 1997 Disruptive innovations were first popularized by disturbing technology terminology. Christensen introduces annoying innovations as a form of distraction by newcomers. The newcomer competes with an established company [2]. But there is a positive side that can be taken in the presence of a new inovation can lead to efficiency of performance of a system [3]. At this time technology information is a growing fast and for example is application e-government. E-government is application one door integrated service to facilitate people get a licensing in a many sector without washing time come to the office. This application can process data and information fast and accurate. So that this application perhaps can facilitate department PPTSP to give an optimal, transparency, effective, efficient and good service for people.

In Indonesia especially in a big city, already now applicated one door integrated service to increase income from permit service and public investment. Semarang city is one example already now applicate this system since 2015. This system is can be assessed effective and efficient make shortcut for public service framework especially in licensing sector. In 2017, Government Semarang City builds a new innovation for public service application based on website to get building licensing (IMB). This application planed finished in 2019, and perhaps can be fast and accurate to help people of Semarang City get a building licensing (IMB). Aim of this research to study Readiness People of Semarang City against a Model for Online Single Submission Building License (IMB). Based on this fact, research question will be reviewed is "*How the Level Readiness People of Semarang City Toward Model Online Single Submission for Building License (IMB)?*". Output this research we can get an information about the level readiness people in Semarang City toward era e-government especially permit IMB online. Then, we will delivered information and suggest to government Semarang City for build an informative website match with a characteristic people of Semarang City.

2. Method

Methods to be used in a study based on research approach selected. Research approach is a scientific method who insists on the use of a concept major in a study will be the analysis and used to target research [6]. These researches use a quantitative method for collecting data and information. Quantitative methods is understanding incident with the quantitative principal and combine with phenomenology principal then expressed through elaboration descriptive heading for draw conclusions research [12]. A subject this research is individuals or group which are in the process get a building permit (IMB) and people who a build website for permit IMB online. The primary data collectiing in this research consists of two kinds is an interview and questionnaire. The secondary data collection in this research get with a read document from BPS, BAPPEDA, Government Semarang City and many more. Technique analysis in this research use a descriptive quantitative. According to [7], analysis descriptive quantitative is technique the analysis for analyze data with way describe or describes the data that has been collected and no make conclusions apply for population. For the analysis this research use a tool analysis weighting Scale Likert. Scale Likert is technique analysis for determine location position someone in something attitude to object from negative to positive, where determination location determined with quantify response someone to answers provided. Scale Likert used for give assessment to indicators every variable so could is known weight each parameter [7], In determination score assessment referring on scale likert that can use level 3, 5 or 7 depending on population research . On ladder more high will produce more research accurate. Giving score do on the data to be used for rate level readiness community of Semarang City in this era era digitalization and onlinezation. In assessment score end there range that describes score the is good, medium, or bad for every indicator variable [8]. By because that, if amount the question in questionnaire 10 with ladder a score of 1 to 5, then the total score between 10 and 50. So determination amount question will influence amount score end on every respondent's research. After all score end respondents obtained, step next is conclude and do convert all ordinal data into interval data. How to do is with divide score the in class interval given the data obtained of the questionnaire data is ordinal data [11]. Formulated to determine range score according to [9] explained as the following :

$$Score\ Range = \frac{Highest\ Score - Lowest\ Score}{Amount\ Score}$$

Then, this is example the range every score is as following :

$$Score\ Range = \frac{5-1}{5} = 0,8$$

So the distance interval score both with a medium score, medium score and a bad score of 0.8. Here is a table of scoring ranges based on each of the criteria described as follows :

Table 1. Assesment Score Range In This Research

Score Range	Criteria
1 – 1,8	Very Bad
1,9 – 2,6	Bad
2,7 – 3,4	Moderate
3,5 – 4,2	Good
4,3 – 5,0	Very Good

Source : *Researcher Interpretation, 2018*

Framework this research described in figure 1 :

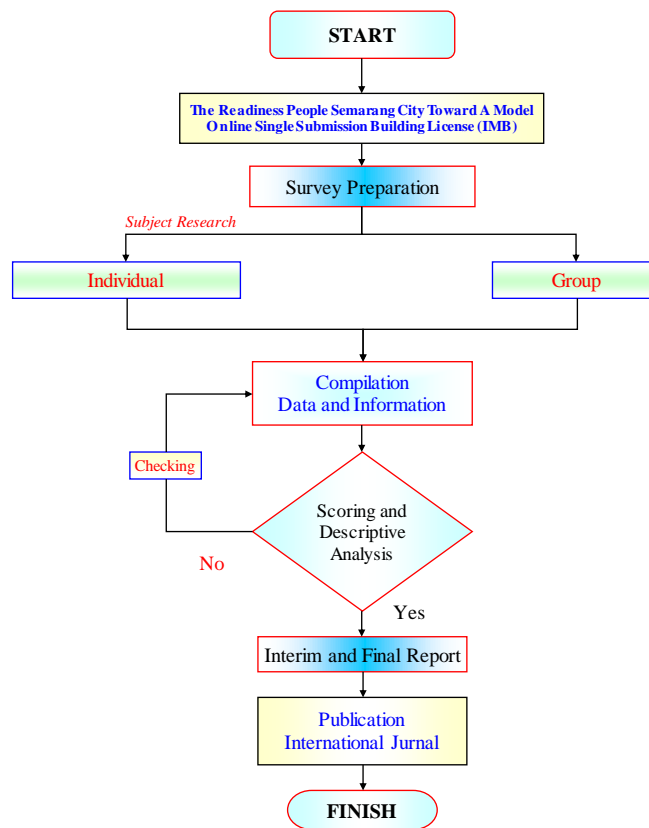
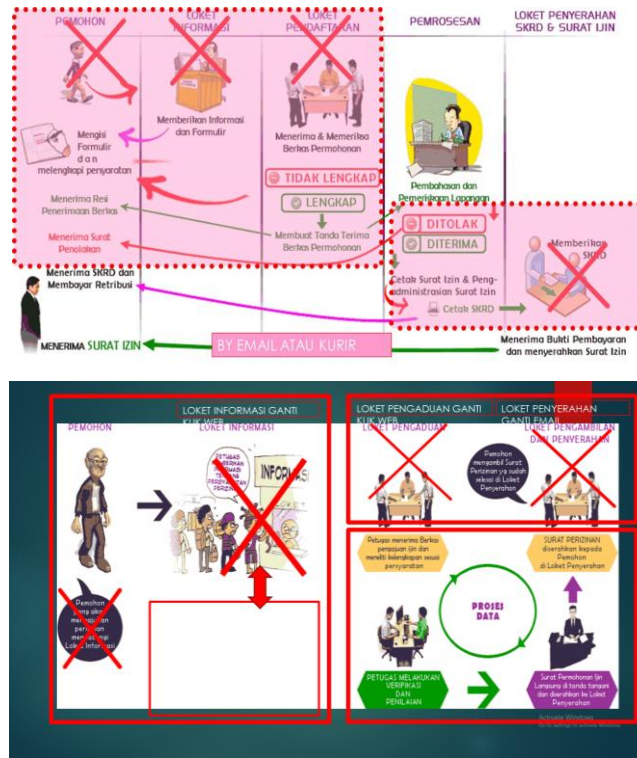


Figure 1. Research Framework

3. Result

E-Government is an extension of Electronic Government, here in after referred to as "E-Gov". In the Indonesian language it is called Electronic Government. E-Government itself is an effort to develop the administration of electronic-based governance. A structuring of management systems and work processes within the government by making use of information and communication technology. The definition of E-Government itself is the use of information technology by the government to provide information and services for its citizens, business affairs, and other matters pertaining to government [1]. Semarang city is one example already now applicate this system since 2015. This system is can be assessed effective and efficient make shortcut for public service framework especially in licensing sector.

In 2017, Government Semarang City builds a new innovation for public service application based on website to get building licensing (IMB). This application planned finished in 2019. From this research we get an information about framework to build the model Permission Building (IMB) Online in Semarang City, as described follows :



Source : Jakarta.go.id 2014, Accessed May 2018

Figure 2. Scheme Model IMB Online

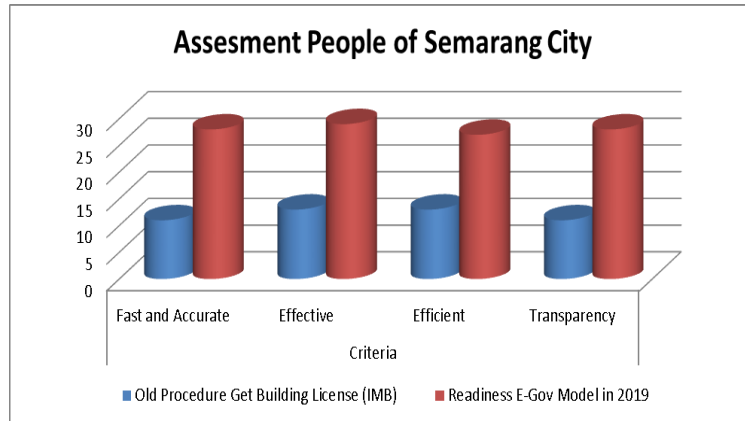
Amount subject for this research is 10 individual or group and use accidental sampling to get some information. Based on primary data collecting in this research consists of two kinds is an interview and questionnaire and secondary data collecting, this research get information from individual or group about Readiness People of Semarang City against a Model for Online Single Submission Building License (IMB), as described follows :

Table 2. The Results of Assessment Respondents Research

Subject (Individual/Group)	Criteria							
	Old Procedure Get Building License (IMB)				Readiness E-Gov Model in 2019			
	Fast and Accurate	Effective	Efficient	Transparency	Fast and Accurate	Effective	Efficient	Transparency
P1	1	1	1	1	4	4	3	3
P2	1	1	1	1	4	3	2	3
P3	1	2	1	1	3	2	2	4
P4	1	1	1	1	2	2	2	3
P5	1	2	2	1	3	4	4	2
P6	1	1	1	2	2	3	4	2
P7	1	1	1	1	2	2	3	3
P8	1	2	1	1	2	3	2	2

Subject (Individual 1/ Group)	Criteria							
	Old Procedure Get Building License (IMB)				Readiness E-Gov Model in 2019			
	Fast and Accurate	Effective	Efficient	Transparency	Fast and Accurate	Effective	Efficient	Transparency
P9	2	1	2	1	3	3	2	4
P10	1	1	2	1	3	3	3	2

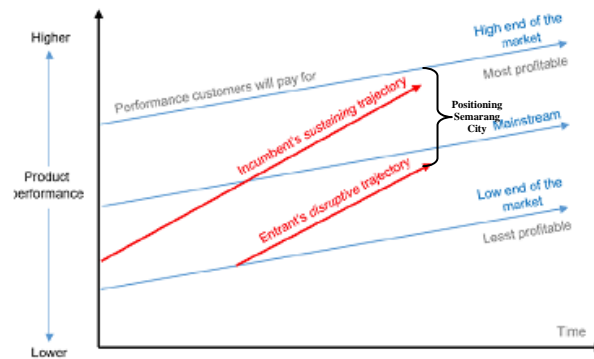
Source : Field Research, 2018



Source : Field Research, 2018

Figure 3. Results Chart Assesment Respondent Research

4. Discussion



Source: Latin American and Caribbean Competition Forum, 2016

Figure 4. Shceme Desruptive Theory

New innovations in a system is a new hope for the government to improve the quality of public services. Based on the results of research that has been done can be seen that, the procedure of building license (IMB) in Semarang city that already existed is considered less optimal and takes a long time. People of Semarang City takes a long time to make the arrangement. Eventhough, if there are errors and less requirements they have to come back periodically to complete it. This results indicates that the process is ineffective and not efficient in advanced era. They need an innovation that can be used as a foundation that is strong enough and is an important factor of economic development is the renewal usually done by entrepreneurs.

An important factor in a renewal should be useful for many people [3,13]. The assessment people of Semarang City community on the development of building license (IMB) model is very enthusiastic. This is described in figure 2 by the improvement of the community assessment chart before the program is completed. They have a great public expectation of a new innovation in better public service. They judge that this is a very good innovation and can make it easier for everyone to take care of the building license. Their hope with the program to be launched in 2019 can improve the quality of existing public services to be faster accurate, effective, efficient and transparency. This is in accordance with the opinion expressed by [4,10] during his life, people always need service. People in general will really expect a form of the best service and supported by adequate facilities and infrastructure and human resources who are experts in the field. Because public service is strategic issues became interaction media between government and society [5]. So that an improvement of public service especially Model for Online Single Submission Building License (IMB) that has quality will be very desirable by society today. Beside that this improvement can lead to efficiency of performance of a system [3].

5. Conclusion

The conclusions can be obtained based on the results of data collection and analysis of the variables tested, that the people of Semarang City is considered very ready to go to the era of filing the Online Single Submission Building License (IMB).

Innovation in improving the quality of public services is needed by the community. So that the system provided by the government can be utilized properly. Suggestions and inputs to the government for the better system that needs to be formed a special team that can manage in a professional and sustainable so that the program can still run well. So that the program will be launched later can still continue serving the community until the next period. This condition is different from that expressed by Clayton M. Christensen in 1997 Disruptive innovations were first popularized by disturbing technology terminology. Christensen introduces annoying innovations as a form of distraction by newcomers. The newcomer competes with an established company [2]. Because public service is a very strategic issue and become the arena of interaction between the government and its citizens [5]. so the latest innovation is strongly supported by all parties. This research is still a lot of limitations in the implementation. The limitation is still reviewing the readiness of the aspect of society (Service User) and have not studied from the service provider side (Semarang City Government). The next research recommendation is that it can conduct in-depth research and see from two aspects of perception ie the government and society. So it can be concluded in making the public service system faster, accurate, effective and efficient.

Acknowledgements

This article represented one of focus research in group study Urban Development Laboratory, The authors would like to express much gratitude to the Department of Urban and Regional Planning, Faculty Engineering Diponegoro University for facilitating this research and who provided insight and expertise that greatly assisted the research, although they may not agree with all of the interpretations / conclusions of this paper.

References

- [1] Adiwijaya, Andre Pratama. 2017. Sistem Pencatatan Sirkulasi Dokumen Perizinan Pada Badan Pelayanan Perizinan Terpadu Provinsi Aceh. Jurnal Teknologi Rekayasa Volume 22 No.2, Agustus 2017. Fakultas Ilmu Komputer, Universitas Gunadarma
- [2] Australian Government: Productivity Commission. (2016). Digital Disruption: What do governments need to do? Canberra: Commonwealth of Australia.
- [3] Oakey, R. P. 2015. Schumpeterian economics: some observations on the relevance of his theoretical contributions to the management of industrial research and development. RADMA and John Wiley & Sons Ltd, 386-398

- [4] Budiman Rusli, Kebijakan Publik Membangun Pelayanan Publik Yang Responsif, Bandung: Hakim Publishing, 2013.
- [5] Dwiyanto, Agus. 2012. Manajemen Pelayanan Publik. Yogyakarta : Gadjah Mada University Press.
- [6] Prasetyo, B. D. J. L. M. 2012. Metode Penelitian Kuantitatif, Yogyakarta, Rajawali Pers.
- [7] Sugiyono. 2012. Metode Penelitian Kuantitatif, Kualitatif, dan R & D. Bandung: Penerbit Alfabeta Bandung.
- [8] Singarimbun, M., & Effendi, S. 2008. Metode Penelitian Survei. Jakarta: Pustaka LP3ES.
- [9] Usman, H., & Akbar, P. S. 2006. Metodologi Penelitian Sosial. Jakarta: Bumi Akbar.
- [10] A.G. Subarsono.2006. Analisis kebijakan publik: konsep, teori dan aplikasi, Yogyakarta : Pustaka Pelajar.
- [11] Nazir, M. 2003. Metode Penelitian. Jakarta: Ghalia Indonesia.
- [12] Corbin Anselm Strauss, J. 1990. Grounded Theory Research: Procedures, Canons, and Evaluative Criteria. Qualitative Sociology Vol. 13, No. 139.
- [13] Sukirno, S. 1978. Ekonomi Pembangunan: Proses, Masalah, dan Dasar Kebijaksanaan. Medan: Borta Gorat.