

DAFTAR PUSTAKA

1. Cunningham FG, Leveno KJ, Bloom SL, Hauth JC, Rouse DJ, Spancy CY. 2014. *Williams Obstetrics* 24 ed. New York: Mc Graw Hill
2. Wiknjosastro. 2009. *Ilmu Kebidanan*. Jakarta : PT Bina Pustaka Sarwono Prawirohardjo
3. Alexander, JM, Cunningham FG: Management. In Tylor RN, Robert, Cunningham FG (eds): Chesley's. *Hypertensive Disorders in Pregnancy*. Amsterdam. Academic Press. 2014
4. Unicef. 2014. *Maternal mortality has declined steadily since 1990, but not quickly enough to meet the MDG target*. Available from <http://data.unicef.org/maternal-health/maternal-mortality#sthash.9iwJps4j.dpuf> . diakses tanggal 8 April. 2015
5. WHO. 2014. *Maternal Mortality*. Available from <http://www.who.int/mediacentre/factsheets/fs348/en/> , diakses tanggal 8 April 2015.
6. Kemenkes RI. 2011. *Peraturan Menteri Kesehatan Republik Indonesia Nomor 2562 Tahun 2011*. Available from: http://www.depkes.go.id/downloads/PERATURAN_MENTERI_KESEHATAN_JUKNIS_JAMPERSAL.pdf . diakses tanggal 8 April 2015
7. Kemenkes RI. 2014. *Profil Kesehatan Indonesia Tahun 2013*. Available from <http://www.depkes.go.id/resources/download/pusdatin/profil-kesehatan-indonesia/profil-kesehatan-indonesia-2013.pdf> . diakses tanggal 8 April 2015
8. Humas Jateng, 2015. *Puskesmas Garda turunkan AKI dan AKB*. Available from : <http://www.jatengprov.go.id/id/berita-utama/puskesmas-garda-turunkan-aki-dan-akb>. diakses tanggal 8 April 2015
9. Dinkes Provinsi Jateng. 2014. *Profil Kesehatan Jawa Tengah Tahun 2013*. Available from: <http://dinkesjatengprov.go.id/v2014/Document/profil2013/#p=19>. Di akses tanggal 8 April 2015
10. Dinkes Kabupaten Pemalang. 2014. *Profil Kesehatan Kabupaten Pemalang 2013*. Pemalang : Dinkes Kabupaten Pemalang

11. AHRQ. 2011. *WHO Recommendations For Prevention And Treatment Of Pre-Eclampsia And Eclampsia*. Available from : <http://www.guideline.gov/content.aspx?id=39384>. Diakses 8 April 2011
12. Lopez-Novoa JM. *Soluble endoglin is an accurate predictor and a pathogenic molecule in preeclampsia*. *Nephrol Dial Transplant*. 2007;22: 712-4.
13. Huppertz B. *Placental origins of preeclampsia: challenging the current hypothesis*. *Hypertension*. 2008;51:970-5.
14. Bdoalah Y, Karumanchi SA, Sachs BP. *Recent Advances In Understanding Of Preeclampsia*. *Croat Med J*. 2005;46(5):728-36
15. Momin AH, Acharya S and Gajjar A. *Review Of Advances In Phytopharmacology Coriandrum Sativum 2012*. Available from <http://www.ijpsr.com/V3I5/2%20Vol.%203,%20Issue%205,%20May%202012.%20IJPSR-482.%20Paper%202.pdf>, diakses tanggal 20 Mei 2015
16. Emamghoreishi M & heidari-Hamedani , 2006, *Sedative-Hypnotic Activity of Extract and Essential Oil of Coriander Seeds, Iran Journal Medical Science .31(1), 22-27*. Available from http://www.sid.ir/En/VEWSSID/J_pdf/85120060106.pdf. diakses tanggal 20 Mei 2015
17. Hosseizodeh, Hossein. *Anticonvulsant Effect of Coriandum Sativum L. Seed Extract in Mice 2011*. Available from http://www.sid.ir/En/VEWSSID/J_pdf/86920000405.pdf, diakses tanggal 20 Mei 2015
18. Jabeen, Qaiser. *Coriander Fruit Exhibits Gut Modulatory, Blood Pressure Lowering And Diuretic Activities 2008*. Available from http://ecommons.aku.edu/cgi/viewcontent.cgi?article=1060&context=pakistan_fhs_mc_bbs , diakses tanggal 20 Mei 2015
19. Kanski JJ,2007, *Hypertensive Disease, Clinical Ophthalmology A Systematic Approach, Eleventh Edition, Chapter 13*, Butterwortf Hanemann, China, Elsevier; 567-569
20. Yogiantoro M, 2006, *Hipertensi Esensial dalam Buku Ajar Ilmu Penyakit Dalam Jilid I, Edisi IV*, Pusat Penerbitan Departemen Ilmu Penyakit Dalam, Jakarta FK UI ; 610-14
21. Chobanian. *Detection, Evaluation, And Treatment Of High Blood Pressure (JNC) Guidelines For Hypertension Management*. Dalam: Christensen,

- Chyntia & Lewis, Patricia. *Core Curriculum for Vascular Nursing 2014*. United States of America: Library of Congress. 2014; 101-135
22. Hallak M. *Hypertension Pregnancy*. In: James DK, Steer PJ, Weiner CP, Gomk B, editors. *High risk Pregnancy*. 3 ed. London: WB Saunders; 2005. p. 639-63.
 23. Sibai B, Dekker G, Kupferminc M. *Pre-eclampsia*. *Lancet*. 2005; 365:785-99.
 24. Lunghi L, Ferreti ME, Medici S, Biondi C, Vesce V. *Control on human trophoblast function*. *Reprod boil and Endocrin*. 2007;5:1-14.
 25. Redman CW. *Latest Advances in Understanding Preeclampsia*. *Science*. 2005;308:1592-4.
 26. Nugroho, Taufan. 2012. *Patologi Kebidanan*. Yogyakarta : Nuha Medika
 27. Fraser DM., Cooper MA. 2009. *Myles Buku Ajar Bidan Edisi 14*. Jakarta: EGC
 28. Beckmann, Charles RB., et al. *Obstetric and Gynecology*. Dalam: Mochtar, Rustam. *Sinopsis Obstetri*. Jakarta: EGC, 2008; 115-118.
 29. Stevens, Bordui. 2008. *Ilmu Keperawatan*. Jakarta: EGC
 30. Adi, L.T., 2008, *Tanaman Obat dan Jus*. PT.Agromedia, Tangerang
 31. Hadipjoentyanti, Endang & Wahyuni, Sri. *Pengelompokkan Kultivar Ketumbar Berdasarkan Sifat Morfologi*. Diakses dari http://indoplasma.or.id/publikasi/buletin_pn/pdf/buletin_pn_10_1_2004_32-36_endang.pdf, tanggal 20 Mei 2015
 32. Ahjun, V., Pandeyan, S.N., Yadavi, S.K., Singh, S., Soni, P., 2011, Review On Coriandum Sativum (Linn.): *An Ayurvedic Medicinal Herb Of Happiness*. *Journal of Advance in Pharmacy and Healthcare Research*, vol. 1, issue 3.
 33. Tedjasukmana P. Tatalaksana *Hipertensi*. *Cermin Dunia Kedokteran*. 2012;39 (4):251-5
 34. Septian BA, Widyaningsih TD. *Peranan senyawa Bioaktif Minuman Cincau Hitam (Mesona Palustris bl.) terhadap Penurunan Tekanan darah Tinggi*. *Jurnal pangan dan Argoindustri*. 2014 : 2 (3): 198202

35. Panjaitan RGP, Bintang M. *Peningkatan kandungan kalium Urin setelah Pemberian Ekstrak Sari buah Belimbing Manis (Avverhoa Carambola)*. Jurnal Veteriner. 2014: 15(1): 108-13
36. Beevers G, Lip GYH, O'brien EABC of *Hypertension: The Phathophysiology of Hypertension*. BMJ. 2006:322:912-6
37. Ismarani, Pradono DI, Darusman LK. *Mikroenkapsulasi Ekstrak Formulan Pegagan-Kumis Kucing-Sambiloto sebagai Inhibitor Angiotensin I Converting Enzyme scara In Vitro*. CEFARS Jurnal Agribisnis dan Pengembangan Wilayah 2011:3(1):11-24
38. Balasuriya BWN, Rupasinghe HPN. *Plant Flavanoids as Angiotensin Concerting Enzyme Inhibitors in Regulation of Hypertension*. FFHD. 2011:5:172-188
39. Muliani, H. (2011). *Pertumbuhan Tikus Laboratorium : Setelah Pemberian Biji Jaraj Pagar (Jatropha curcas) Growth Exposed to barbados Nuts Seed*. Bioma
40. Campbell DT, Stanley JC. *Experimental and quasi-eksperimental designs for reseach*. Dalam: Sastroasmoro, Sudigdo., Ismael, Sofyan. Dasar-Dasar Metodologi Penelitian Edisi 4. Jakarta: Sagung Seto, 2011; 116-117.
41. Nattaj, S, Tayyebi, P, Zangoor, V. 2011. *The Effect Of Coriandrum Sativum Seed Extract On The Learning Of Newborn Mice By Electric Shock: Interaction With Caffeine And Diazepam*. Diakses dari <http://www.ncbi.nlm.nih.gov/pmc/articles/PMC3218779/> . tanggal 30 Juni 2016



UNIVERSITAS GADJAH MADA
PUSAT STUDI PANGAN DAN GIZI

No. : PSPG – UGM/12/IX/2015
Hal. : Permohonan Ijin Penelitian

16 September 2015

Kepada
Yth. Direktur Progran Pascasarjana
Fakultas Kedokteran, Universitas Diponegoro
Jl. Imam Bardjo, SH No. 5
Semarang 50231

Dengan hormat.

Menindaklanjuti surat Saudara Nomor 2379/UN7.4/TU/2015 perihal Permohonan Ijin Penelitian di Laboratorium Pusat Studi Pangan dan Gizi UGM sehubungan dengan kegiatan penulisan Tesis bagi mahasiswa Program Studi Magister Epidemiologi Konsentrasi Sain Terapan Program Pascasarjana Universitas Diponegoro :

Nama : Vina Nurul Utami
NIM : 30000313420076

Judul Tesis : Pengaruh Ekstrak Ketumbar (*Coriandrum Sativum*) Terhadap Perubahan Tekanan Darah : Studi Laboratorium pada Tikus Pasca Bersalin

Waktu Ijin Lab : 10 September s/d 30 Oktober 2015

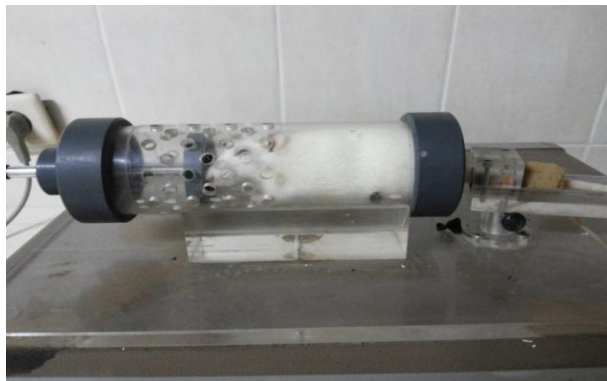
Dengan ini kami beritahukan bahwa permohonan Ijin Penelitian menggunakan Laboratorium di Pusat Studi Pangan dan Gizi UGM tersebut dapat kami setujui sesuai peraturan yang berlaku.

Demikian kami sampaikan atas perhatiannya diucapkan terima kasih.

Kepala

Prof. Dr. Ir. Umar Santoso, MSc.
NIP. 195902171985031002

Lampiran 8



Lampiran 8

