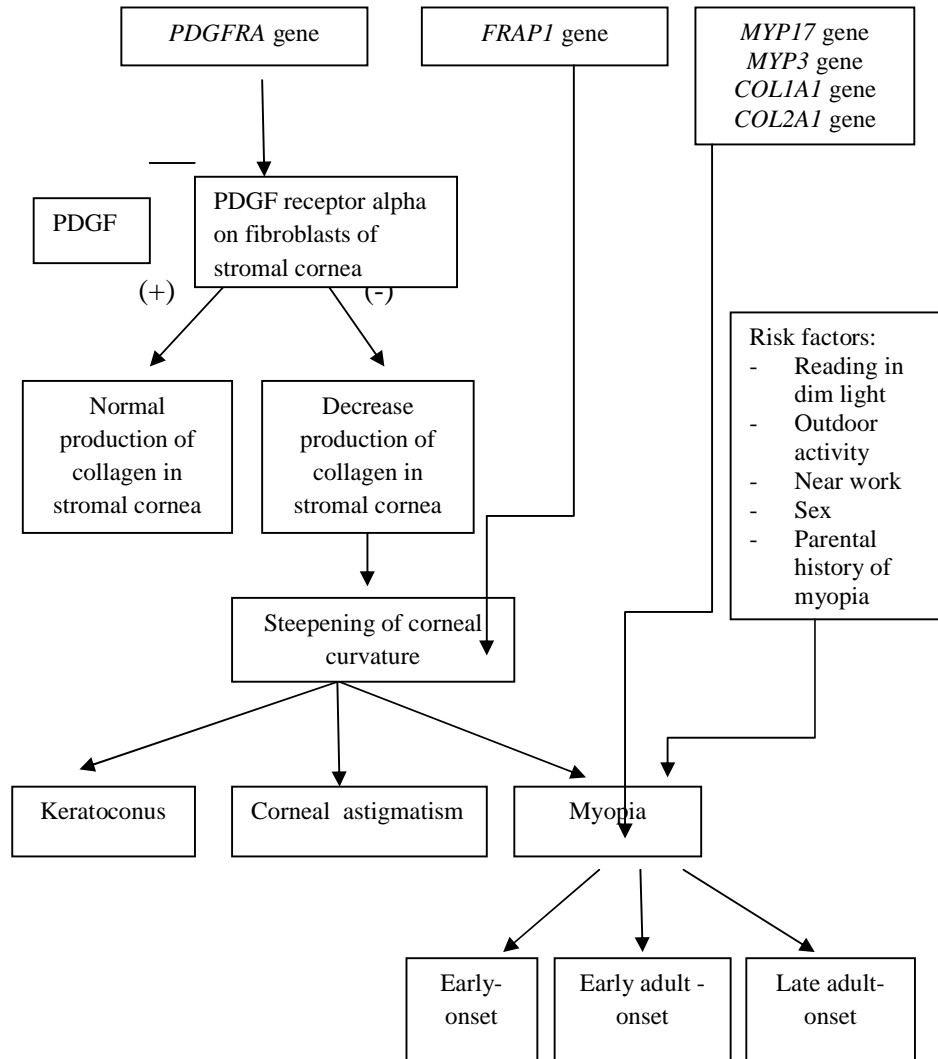


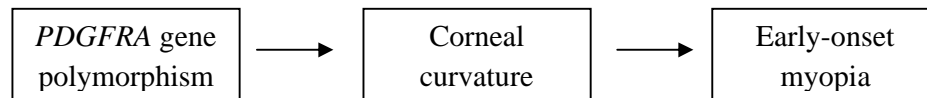
## CHAPTER III THEORETICAL AND CONCEPTUAL SCHEME

### 3.1 Theoretical Scheme



### 3.2 Conceptual scheme

Based on the theoretical scheme above, some of the variables are intentionally omitted. On this research only *PDGFRA* gene polymorphism that had been examined to see its association with early-onset myopia.



### 3.3 Hypothesis

#### 3.3.1 Research Hypothesis

1. The distribution of mutant allele polymorphisms in *PDGFRA* gene is bigger in the subject with early-onset myopia than in normal subject.
2. *PDGFRA* gene polymorphism, parental history, near work, reading in dim light, outdoor activity, sex, and corneal curvature are correlated to early-onset myopia in South Sumatera population.

#### 3.3.2 Null Hypothesis

1. The distribution of mutant allele polymorphisms in *PDGFRA* gene is equal between the subject with early-onset myopia and in normal subject.
2. *PDGFRA* gene polymorphism, parental history, near work, reading in dim light, outdoor activity, sex, and corneal curvature are not correlated to early-onset myopia in South Sumatera population.