

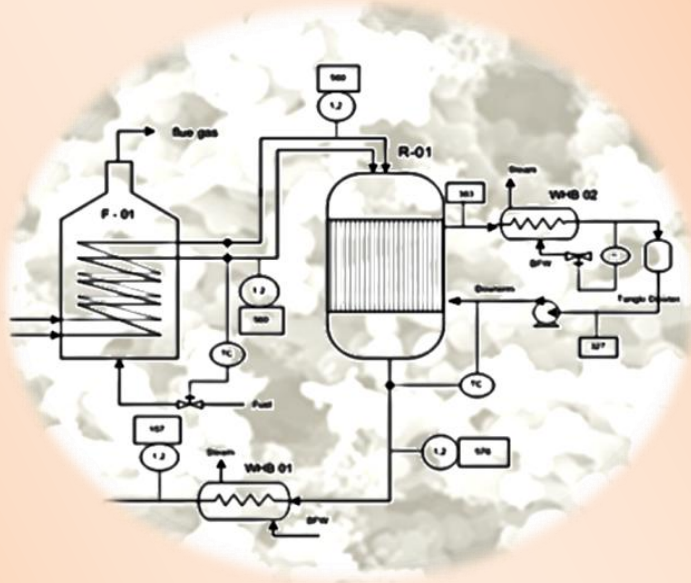


1st INTERNATIONAL CONFERENCE ON
CHEMICAL AND MATERIAL ENGINEERING



PROCEEDING of ICCME 2012

ISBN 978-602-097-281-7



Departement of Chemical Engineering,
Diponegoro University, Semarang – Indonesia
12 – 13 September, 2012



Penerbitan & Percetakan
UPT UNDIP Press
SEMARANG



Organizing Committee

The Responsible :	Ir. H. Bambang Pudjianto, MT (Dean of the Faculty of Engineering UNDIP)
Steering committee :	Prof. Ir. Abdullah, MS, PhD Dr.Ir. Ratnawati, MT Dr.Ir. Budiyo, MSi Dr.nat.tech. Siswo Sumardiono
Chair :	Dr. rer.nat. Heru Susanto
Co-chair:	Dr. Andri Cahyo Kumoro
Secretary and Secretariat :	Dr. Nita Aryanti Dessy Ariyanti, ST, MT
Treasurer :	Aprilina Purbasari, ST, MT Yuli Sugarti Erlina Sari Amd
Program :	Dr. Hadiyanto Ir. Diah Susetyo Ratnawati, MT Ir. Indro Sumantri, MSc Aji Prasetyaningrum, ST, MT Harry Permadi Paramarta Siwi R Abraham T Eka Putra Nadhila Sylvianti Herlina Sukmawati Favian Naviega Hamdani Olga Meta Jolanda Indra Hutama Defany Purnamasari Putri Fatkhiyatul Ulya Faris Gustomi Salim Satria Arif Wicaksono Bakrie
Paper and proceedings :	Dr. Widayat Luqman Buchori, ST, MT Noer Abyor Handayani, ST., MT M. Bachtiar Rifai Wahid Hasyim Mudzofar Sofyan Zeno Rizqy Ramadhan
Consumption (Food & drink) :	Dr. Dyah Hesti Wardani Ir. Kristinah Haryani, MT Indah Yuliana

Funding and sponsorship :

Dr. I Nyoman Widiasta
Prof. Ir. Abdullah, MS, PhD
Ir. Danny Soetrisnanto, MEng
Ir. Agus Hadiyanto, MT
Dr. Tutuk Djoko Kusworo
Ir. Nur Rokhati, MT

Publication and Information :

Dr. Istadi
Nur Widayarti

Equipment and Transportation :

Ir. Hargono, MT
Dr. ing. Suherman
Anik Kristi Rahayu, S.Sos
Darto A

Scientific Editorial Board Members

	Prof. Dr. Mathias Ulbricht
UDuE, Germany	
	Prof. Dr. Hadi Nur
UTM, Malaysia	
	Prof. Dr. Abdullah
UNDIP, Indonesia	
	Prof. Dr. Bakti Jos
UNDIP, Indonesia	
	Prof. Dr. Rochmadi
UGM, Indonesia	
	Dr. Nurul Taufiqurrohman
LIPI, Indonesia	
	Dr. Abdul Halim M. Yusof
UTM, Malaysia	
	Dr. M. A. Zazouli
MUMS, Iran	
	Assoc. Prof. Dr. Masturah Markom
UKM, Malaysia	
	Dr. Shahin Ghafari
UM, Malaysia	
	Dr. Yin Chun Yang
UiTM, Malaysia	
	Dr. Bryan Rey Oliveros
UP, Philippines	
	Dr Arie Arenst Andreas
Parahyangan Catholic University, Indonesia	
	Dr. Shahin Ghafari
University of Malaya	
	Dr. K Kusmiyati
UMS, Indonesia	
	Dr. Hadiyanto
UNDIP, Indonesia	
	Dr. M. Djaeni
UNDIP, Indonesia	
	Dr. Didi Dwi Anggoro
UNDIP, Indonesia	
	Dr Heru Susanto
UNDIP, Indonesia	

	Prof Bambang
UNDIP, Indonesia	Dr. Widayat
UNDIP, Indonesia	Dr. Budiyo
UNDIP, Indonesia	Dr. Istadi
UNDIP, Indonesia	Dr. Ratnawati
UNDIP, Indonesia	Dr. Andri Cahyo Kumoro
UNDIP, Indonesia	



Editor

	Dr. Widayat
UNDIP, Indonesia	Luqman Buchori, ST, MT
UNDIP, Indonesia	Noer Abyor Handayani, ST, MT
UNDIP, Indonesia	



PREFACE

This abstract book contains abstracts of research papers presented on International Conference on Chemical and Material Engineering (ICCME) 2012. The ICCME 2012 is organized by Department of Chemical Engineering Diponegoro University along with the opening of the doctoral program in the Department of Chemical Engineering. The conference took place at Grand Candi Hotel, Semarang Indonesia in September 12-13, 2012. It is designed as an international forum on fundamental and application of Chemical and Material Engineering among the researchers, students, industries and government. The ICCME offers a platform for extensive sharing and exchange of ideas, thoughts and discussions on all aspects of Chemical and Material Engineering.

The ICCME 2012 invited 65 keynote speakers from 84 and accepted 70 research papers. There are 4 (four) parallel sessions comprising 4 categories: Bioprocess and Renewable Energy (BRE), Material and Science Development (MSD), Separation and Process Engineering (SPE) and Process System Engineering (PSE). The full research papers can be obtained on the enclosed CD Proceeding with ISBN of 978-602-097-281-7

The organizing committee express our gratitude to the distinguished keynote speakers: Prof. M Ulbricht, Prof Hadi Nur, Prof Purwanto, Ir. Gunung Sardjono, Ir. Hardiono and Ichsan, MSc, PDEng for their participation to this conference. We thank to all participants for their contributions to the Conference Programme, abstract book and conference proceedings. We also express our sincere thanks to the scientific committee for reviewing and evaluating the abstracts.

It is very pleased to acknowledge to the conference sponsors: IKPT, Pertamina Gas, BP Migas, Pura Grup, C-BIORE, MER-C, D-WaRE, BCREC for their financial support to enable this conference to be accomplished.



Dr. rer. nat. Heru Susanto
(Chair)

The Organizing Committee of the International Conference on Chemical and Material Engineering (ICCME) 2012 is pleased to welcome you to this conference which is held in Semarang, 12-13 September 2012. The event is organized by the Department of Chemical Engineering, Faculty of Engineering, Universitas Diponegoro (UNDIP).

The aims of the ICCME are to be an international forum for the researchers, students, industries and government in communicating their research and development, to share extensively and exchange of ideas, thoughts and discussions on all aspects of chemical and material engineering and to facilitate the formation of networks among participants of the conference for improving the quality and benefits of the research. We believe that your research and experience will be a valuable contribution to this conference.

The scientific program of the ICCME includes plenary lectures given by leading experts and contributed papers on all aspect of chemical and material engineering. Around 100 abstracts and persons from different countries contribute to this conference. We appreciate the contribution of the participants and on behalf of the organizing committee we would like to express our sincere thanks to plenary Speakers Prof. Dr. Mathias Ulbricht (from Duisburg-Essen University, Germany), Prof. Dr. Hadi Nur, PhD (from UTM, Malaysia), Ir. R. Gunung Sardjono Hadi, MT (President Director of PT Pertamina Gas), Drs. Hardiono, Mcomm (from BPMIGAS), Prof. Dr. Purwanto (from Diponegoro University), and Ichsan, MSc, PDEng (PT. Maris Sustainable Indonesia). In addition, we would like also thank to: IKPT, PERTAGAS, BPMIGAS, PURA GROUP, BCREC, C-CIORE, MeR-C, DeWARE for their financial support.

Finally, we hope that this conference and this proceeding will be useful and promote the exchange of knowledge and ideas in chemical and material engineering.

Dr. rer. nat. Heru Susanto

Dr. Andri Cahyo Kumoro

Cover	1
Scientific and Editorial Board Members	2
Editor	3
Organizing Committee	4
Preface	6
Contents	7
Table of Abstracts	8
Programme Schedule	17
Abstract	
Invited Speakers	21
Oral Presentation	
Bioprocess and Renewable Energy (BRE)	27
Material and Science Development (MSD)	52
Process System Engineering (PSE)	80
Separation and Process Engineering (PSE)	92
Acknowledgement	

Table of Papers

Invited Speakers

- [IS – 01](#) **PROF. DR. MATHIAS ULBRICHT**
UDuE, Germany
- [IS – 02](#) **PROF. DR. PURWANTO**
Diponegoro University, Indonesia
- [IS – 03](#) **IR. R. GUNUNG SARDJONO HADI, MT**
PT Pertamina Gas, Indonesia
- [IS – 04](#) **DRS. HARDIONO, MComm**
BP Migas, Indonesia
- [IS – 05](#) **ICHSAN, MSC, PDENG**
PT Maris Sustainable Indonesia
- [IS – 06](#) **PROF. DR. HADI NUR**
UTM, Malaysia

Oral Presentation

BRE – BIOPROCESS AND RENEWABLE ENERGY

- [BRE – 01](#) **ENZYMATIC HYDROLYSIS OF ALKALINE PRETREATED COCONUT COIR**
Akbarningrum Fatmawati^a, Rudy Agustriyanto^a, Carolina Adhelia^a, Jovita Paulina^a, Yusnita Liasari^b
^a *Chemical Engineering Department, Faculty of Engineering, Surabaya University, INDONESIA*
^b *Faculty of Biotechnology, Surabaya University, INDONESIA*
- [BRE – 02](#) **OPTIMIZATION OF STREPTOMYCES SP.A11 MEDIUM CULTIVATION ON CYCLO(TYROSYL-PROLYL) PRODUCTION USING THE RESPONSE SURFACE METHODOLOGY**
Rofiq Sunaryanto
Center of Biotechnology, Badan Pengkajian dan Penerapan Teknologi (BPPT), INDONESIA
- [BRE – 03](#) **ENHANCEMENT OF BIOMASS PRODUCTION FROM SPIRULINA SP CULTIVATED IN POME MEDIUM**
Hadiyanto, Muhamad Maulana Azimatun Nur, Ganang Dwi H
Center of Biomass and Renewable Energy, Department of Chemical Engineering Diponegoro University, INDONESIA
- [BRE – 04](#) **ETHANOL PRODUCTION FROM NON FOOD TUBERS OF ILES-ILES (AMORPHOPHALLUS CAMPANULATUS) USING HYDROLYZES BY COMMERCIAL ENZYMES (A AND B AMYLASE) AND FERMENTATION BY SACCHAROMICES CEREVISEAE**
Kusmiyati^{a,b}, Asha Tridayana^a, Nurul Widya FP^a, Tri Utami^a
^a *Chemical Engineering Department, Faculty of Engineering, Muhammadiyah Surakarta University INDONESIA*
^b *Renewable Energy Research Centre, Muhammadiyah Surakarta University - Surakarta INDONESIA*
- [BRE – 05](#) **SYNTHESIS OF ZEOLITE PELLETS FROM NATURAL ZEOLITE AND STARCH AS ADSORBENT FOR FUEL GRADE BIOETHANOL PRODUCTION**
Anwar Ma'ruf and Neni Damajanti
Chemical Engineering Department, Faculty of Engineering, Muhammadiyah University of Purwokerto, INDONESIA

- BRE – 06** **QUALITY IMPROVEMENT (FIBER CONTENT AND PROTEIN DIGESTIBILITY VALUE) OF CASSAVA PEEL BY FERMENTATION USING TAPE YEAST WITH VITAMIN B SUPPLEMENTATION**
 Wikanastri Hersoelistyorini^a, Cahya S. Utama^b
^a *Food Technology Study Program, University of Muhammadiyah Semarang, INDONESIA*
^b *Department of Animal Feed and Nutrition, Diponegoro University, INDONESIA*
- BRE – 07** **THE DETERMINATION OF SALINITY PROFILE AND NUTRITION (NAH₂PO₄) PROFILE IN UTILIZING NANNOCHLOROPSIS OCLATA TO GAIN MAXIMUM LIPID**
 Elida Purba, Kenjiro Parsaulian Siburian
Chemical Engineering Department, Faculty of Engineering, University of Lampung, INDONESIA
- BRE – 08** **DESIGN PROCESS OF ETHANOL PRODUCTION BY EXTRACTIVE -FERMENTATION TO INCREASE THE YIELD AND PRODUCTIVITY OF ETHANOL**
 Ayu Ratna Permanasari, Ririn Indriani AR, Tri Widjaja, Ali Altway
Chemical Engineering Department, Faculty of Industrial Technology, Sepuluh Nopember Institut of Technology, INDONESIA
- BRE – 09** **TRANSESTERIFICATION OF VEGETABLES OIL USING SUB-AND SUPERCRITICAL METHANOL**
 Nyoman Puspa Asri^{a,d}, Siti Machmudah^{a,b}, Wahyudiono^c, Suprpto^a, Kusno Budikarjono^a, Achmad Roesyadi^a, Mitsuru Sasaki^c, Motonobu Goto^b
^a *Chemical Engineering Department, Industrial Technology Faculty, Sepuluh Nopember Institute of Technology, Surabaya, INDONESIA 60111*
^b *Bioelectrics Research Center, Kumamoto University, JAPAN*
^c *Graduate School of Science and Technology, Kumamoto University, JAPAN*
^d *Chemical Engineering Department, Faculty of engineering, WR Supratman University, Surabaya, INDONESIA*
- BRE – 10** **THE INFLUENCE OF CATALYSTS TO SELECTIVITY OF PRODUCT OF PALM OIL CRACKING**
 Achmad Roesyadi, Danawati Hariprajitno, Nurjannah, Santi Dyah Savitri
Chemical Reaction Engineering Laboratory, Department Of Chemical Engineering Department Of Chemical Engineering, INDONESIA
- BRE – 11** **BIO-LUBRICANTS DEVELOPMENT: POTENTIAL USE OF BORON-CONTAINING ADDITIVES**
 Dicky Dermawan, Dyah Setyo Pertiwi
Chemical Engineering Department, Faculty of Industrial Technology, Itenas, INDONESIA
- BRE – 12** **UTILIZATION POTENCY OF EXTRACELLULAR POLYMERIC SUBSTANCE AS INDUSTRIALS BIOSORBENT AND ION EXCHANGE RESIN**
 Zainus Salimin^a, Pungky Ayu Artiani^a, Junaidi^b, and Wawan^b
^a *Radioactive Waste Technology Center, National Nuclear Energy Agency – BATAN, INDONESIA*
^b *Study Program of Environmental Engineering, Faculty of Engineering, Diponegoro University, INDONESIA*
- BRE – 13** **IMMOBILIZATION OF COW RUMEN FLUID CELLULASE BY ENTRAPMENT IN CALCIUM ALGINATE BEADS**
 Indah Hartati^a, Laeli Kurniasari^a, and Agnes Budiarti^b
^a *Department of Chemical Engineering, Faculty of Engineering, Wahid, INDONESIA*
^b *Department of Pharmacy, Faculty of Pharmacy, Wahid Hasyim University, INDONESIA*
- BRE – 14** **OPTIMIZATION PROCESS OF BIODIESEL PRODUCTION FROM NYAMPLUNG SEED (CALOPHYLLUM INOPHYLLUM L) USING IN SITU PROCESS AND ULTRASONIC ASSISTED**
 Widayat, Abdullah, Kanevi Octova Paradita and Elsanta Monaliza Tungga D
Department of Chemical Engineering Faculty of Engineering Diponegoro University, INDONESIA
- BRE – 15** **EFFECT OF PHENYLACETIC ACID ADDITION ON PRODUCTIVITY OF PENICILLIUM CHRYSOGENUM IN PENICILLIN G PRODUCTION USING PILOT SCALE REACTOR**
 Amila Pramisandi, Rofiq Sunaryanto, Suyanto
Center for the Application of Biotechnology, BPPT, INDONESIA
- BRE – 16** **STUDY OF ENZYMATIC HYDROLYSIS OF DILUTE ACID PRETREATED COCONUT HUSK**
 Rudy Agustriyanto, Akbarningrum Fatmawati, Maria Angelina, Raissa Monica
Surabaya University, INDONESIA

- BRE – 17** **KINETICS OF ETHANOL PRODUCTION FROM WHEY BY FERMENTATION USING KLUYVEROMYCES MARXIANUS**
 Dessy Ariyanti^{ab}, Desiyantri Siti Pinundi^a, Apsari Puspita Aini^a, Hadiyanto^{ab}, Djoko Murwono^a
^a *Chemical Engineering Department, Faculty of Engineering, Diponegoro University, INDONESIA*
^b *Center of Biomass and Renewable Energy (C-BIORE), Faculty of Engineering, Diponegoro University, INDONESIA*
- BRE – 18** **POTENTIAL OF SO₄²⁻ / ZnO ACID CATALYST FOR HETEROGENEOUS TRANSESTERIFICATION OF VEGETABLE OIL TO BIODIESEL**
 I. Istadi, Didi D Anggoro, Luqman Buchori, Inshani Utami, and Roikhatus Solikhah
Laboratory of Energy and Process Engineering, , Chemical Reaction Engineering an Catalysis Group, Department of Chemical Engineering, Diponegoro University, INDONESIA
- BRE – 19** **A SIMPLE METHOD FOR EFFICIENT EXTRACTION AND SEPARATION OF C-PHYCOCYANIN FROM SPIRULINA PLATENSIS**
 Noer Abyor Handayani^{ab}, Hadiyanto^{ab}, Melinda^a, Inggar^a, Amin Nugroho^a
^a *Chemical Engineering Department, Faculty of Engineering, Diponegoro University, INDONESIA*
^b *Center of Biomass and Renewable Energy (C-BIORE), Faculty of Engineering, Diponegoro University, INDONESIA*
- BRE – 20** **STUDY ON SLAUGHTERHOUSE WASTES POTENCY AND CHARACTERISTIC FOR BIOGAS PRODUCTION**
 Budiyo^a, I Nyoman Widiasa^a, Seno Johari^b, Sunarso^c
^a *Department of Chemical Engineering, Diponegoro University, INDONESIA*
^b *Faculty of Animal Science and Agriculture, Diponegoro University, INDONESIA*
^c *Department of Chemical Engineering, Diponegoro University, INDONESIA*
- BRE – 21** **STUDY ON PRODUCTION PROCESS OF BIODIESEL FROM RUBBER SEED (HEVEA BRASILIENSIS) BY IN SITU TRANSESTERIFICATION METHOD WITH ALKALINE CATALYZED**
 Widayat^{a,b}, Agam Duma Kalista Wibowo^a, Hadiyanto^{a,b}
^a *Magister of Chemical Engineering, Diponegoro University, INDONESIA*
^b *Central of Biomass and Renewable Energy, INDONESIA*
- BRE – 22** **THERMOGRAVIMETRY CHARACTERISTICS OF MSW CHAR BRIQUETTE COMBUSTION**
 Dwi Aries Himawanto^a, Indarto^b, Harwin Saptoadi^b, Tri Agung Rohmat^b
^a *Mechanical Engineering Department Faculty of Engineering, Sebelas Maret University, INDONESIA*
^b *Mechanical and Industrial Engineering Department Faculty of Engineering, Gadjah Mada University, INDONESIA*
- BRE – 23** **PERFORMANCE OF SULFONATED POLY ETHER-ETHER KETONE (SPEEK) AND NAFION MEMBRANE IN PALM OIL MILL EFFLUENT MICROBIAL FUEL CELL**
 Nur Dianaty Nordina Abdul Halim Mohd Yusof^{a,b,c}, Ahmad Fauzi Ismail^{a,d}, Mohd Noorul Anam Mohd Norddin^{a,d}
^a *Faculty of Chemical Engineering, Universiti Teknologi Malaysia, MALAYSIA*
^b *Advanced Membrane Technology Research Centre, Universiti Teknologi Malaysia, MALAYSIA*
^c *Department of Biology, Massachusetts Institute of Technology, UNITED STATES OF AMERICA*
^d *Faculty of Petroleum and Renewable Engineering, Universiti Teknologi Malaysia, MALAYSIA.*
- BRE – 24** **SURFACE MODIFICATION OF POLYETHERSULFONE WITH POLYVINYLPIRROLIDONE-IODINE VIA PHASE INVERSION AND UV PHOTOGRATING FOR ANTIBACTERIAL APPLICATIONS**
 Abdul Halim Mohd Yusof^{a,b}, Devanai Kannan^a
^a *Department of Bioprocess Engineering, Faculty of Chemical Engineering;Universiti Teknologi Malaysia, MALAYSIA*
^b *Department of Biology, Massachusetts Institute of Technology, UNITED STATES OF AMERICA*
- BRE – 25** **ESTERIFICATION OF JATROPHA OIL TO BIODIESEL OVER SiO₂-PHOSPHOTUNGSTIC ACID HETEROGENEOUS CATALYST**
 Nur Hidayati, Aning Tri Aisyah, Ike Sambung Sari and Prinda Widayari
Chemical Engineering Department, Universitas Muhammadiyah Surakarta, INDONESIA

- [MSD – 01](#) **CHARACTERIZATION OF SAGO STARCH AND STUDY OF LIQUEFICATION PROCESS ON HIGH FRUCTOSE SYRUP PRODUCTION**
Anastasia Prima Kristijarti, Tony Handoko, Cindy Adelia, Lucy Andrea
Chemical Engineering Department, Faculty of Industrial Engineering, Parahyangan Catholic University, INDONESIA
- [MSD – 02](#) **POLYMER SOLAR CELLS: EFFECTS OF ANNEALING TREATMENT AND POLYMER BLENDS ON I-V CHARACTERISTICS**
Erlyta Septa Rosa and Shobih
Research Center for Electronics and Telecommunication, Indonesian Institute of Sciences (PPET-LIPI), INDONESIA
- [MSD – 03](#) **THE OPTIMIZATION OF DIPHENYL METHANE DIISOCYANATE POLYMERIZATION PROCESS WITH THE USED FRYING OIL POLYALCOHOL TO FOAM POLYURETHANE USING RSM**
Faleh Setia Budi^a and Didi Dwi Anggoro^b
^a *Food Science and Technology Department, Faculty of Agricultural Engineering and Technology, IPB, INDONESIA*
^b *Chemical Engineering Department, Engineering Faculty UNDIP, INDONESIA*
- [MSD – 04](#) **NUMERICAL ANALYSIS OF A JOURNAL BEARING WITH CHEMICAL ROUGHNESS**
Mohammad Tauviqirrahman^{a,b}, Muchammad^a, Jamari^b, and Dik J. Schipper^a
^a *Laboratory for Surface Technology and Tribology, Faculty of Engineering Technology, University of Twente, THE NETHERLANDS*
^b *Department of Mechanical Engineering, University of Diponegoro, INDONESIA*
- [MSD – 05](#) **INVESTIGATION ON CENTRIFUGAL PUMP SHAFT: A COMPARISON STUDY OF THE SME AND THE IMPORTED PRODUCT**
Rifky Ismail, Sugiyanto, Mohammad Tauviqirrahman and Jamari
Mechanical Engineering Department, Faculty of Engineering, Diponegoro University, Jl. Prof Sudharto, SH-Tembalang, Semarang INDONESIA
- [MSD – 06](#) **PREPARATION OF NANOPARTICLE SILICA FROM SILICA SAND AND QUARTZITE BY ULTRAFINE GRINDING**
Agus Wahyudi^a, Teguh Nurasi^b And Siti Rochani^a
^a *R&D Centre for Mineral and Coal Technology, INDONESIA*
^b *Department of Chemistry, University of Jenderal Achmad Yani, INDONESIA*
- [MSD – 07](#) **APPLICATION OF TiO₂ FOR SELF CLEANING IN WATER BASED PAINT WITH POLYETHYLENE GLYCOL (PEG) AS DISPERSANT**
Nining Kusmahetiningsih, Dyah Sawitri
Departement of Engineering Physics, Faculty of Industrial Engineering, Sepuluh Nopember Institute of Technology, INDONESIA
- [MSD – 08](#) **USING SELF CLEANING TiO₂ PHOTOCATALYST IN THE MAKING OF CERAMIC TILES TO DECREASE AMMONIUM CONCENTRATION AND BACTERIUM GROWTH**
Ana Hidayati M^a, Sri Darmawati^a, Muh. Amin^b
^a *Health Analyst Department, Nursing and Health Faculty, University of Muhammadiyah Semarang, INDONESIA*
^b *Mechanical Engineering Department, Engineering Faculty, University of Muhammadiyah Semarang, INDONESIA*
- [MSD – 09](#) **THE EFFECT OF POLYANILINE ADDITION ON THE PROPERTIES OF CARBON-BASED POLYPROPYLENE COMPOSITE**
Lies A. Wisojodharmo, Dewi Kusuma Arti, Niya Listiani Dewi
Center for Materials Technology, Agency for the Assessment and Application Technology (BPPT), INDONESIA

- MSD – 10** **COMPUTATIONAL ANALYSIS OF WALL SLIP AND CAVITATION IN LUBRICATED SLIDING SYSTEMS**
 Muchammad^a, M. Tauviquirrahman^a, J. Jamari^b, and D.J. Schipper^a
^a *Laboratory for Surface Technology and Tribology, Faculty of Engineering Technology, University of Twente, THE NETHERLANDS*
^b *Department of Mechanical Engineering, University of Diponegoro, INDONESIA*
- MSD – 11** **FRICTION ANALYSIS ON SCRATCH DEFORMATION MODES OF VISCO-ELASTIC-PLASTIC MATERIALS**
 Budi Setiyana^a, I. Syafaat^a, J. Jamari^b, and D.J. Schipper^a
^a *Laboratory for Surface Technology and Tribology, Faculty of Engineering Technology, University of Twente, THE NETHERLANDS*
^b *Department of Mechanical Engineering, University of Diponegoro, INDONESIA*
- MSD – 12** **PREDICTION OF SLIDING WEAR OF ARTIFICIAL ROUGH SURFACES**
 Imam Syafa'at^a, Budi Setiyana^a, Rifky Ismail^a, Eko Saputra^a, J. Jamari^b, D.J. Schipper^a
^a *Laboratory for Surface Technology and Tribology, Faculty of Engineering Technology, University of Twente, THE NETHERLANDS*
^b *Department of Mechanical Engineering, University of Diponegoro, INDONESIA*
- MSD – 13** **THE APPLICATION OF B-CYCLODEXTRIN AND POLYETHYLENE GLYCOL 6000 IN THE MICRONISATION OF DRUG – POLYMER COMPOSITE WITH PARTICLE FROM GAS SATURATED SOLUTIONS (PGSS) METHOD**
 Putu Riani Pradnyandari, Rizky Tetrisyanda, Prida Novarita Trisanti, Firman Kurniawansyah, and Sumarno
Chemical Engineering Department, Faculty of Industrial Technology, Institute of Technology Sepuluh Nopember (ITS), INDONESIA
- MSD – 14** **THE EFFECT OF SONICATION ON THE CHARACTERISTIC OF CHITOSAN**
 Azra Yuliana, Linggar S. Pradeckta, Emma Savitri, Anita R. Handaratri, Sumarno
Chemical Engineering Department, Faculty of Industry Technology, Sepuluh Nopember Institut of Technology Surabaya, INDONESIA
- MSD – 15** **EFFECTS OF CHAIN EXTENDER TO THE STRUCTURE OF CASTOR OIL-BASED POLYURETHANE FOAM**
 Edhi Pratondo, Adityo Wahyu Hanggoro, Eva Oktavia Ningrum, Sumarno
Chemical Engineering Department, Faculty of Industrial Technology, Sepuluh Nopember Institute of Technology, INDONESIA
- MSD – 16** **THE SYNTHESIS OF CARBOXYMETHYL AMYLOSE GRAFTED POLYACRYLAMIDE AND ITS APPLICATION IN DRUG RELEASE ASPIRIN**
 Noor Hidayati, Naila Amanda, Karsono Samuel Padmawijaya, Firman Kurniawansyah, and Sumarno
Chemical Engineering Department, Faculty of Industry Technology, Sepuluh Nopember Institut of Technology Surabaya, INDONESIA
- MSD – 17** **EFFECT OF TWEEN 80'S EMULSIFIER CONCENTRATION WITH SPONTANEOUS DIFFUSION METHOD ON STABILITY SOLUTION TEGERAN'S NANOEMULSION NATURAL DYES**
 Heny Herawati^a, Sri Yuliani^a, Meika Syahbana Rusli^b, Ratih Purnamasari^b
^a *Indonesia Center For Agricultural Postharvest Research and Development, INDONESIA*
^b *Bogor Agricultural University, Agricultural Technology Faculty, IPB, INDONESIA*
- MSD – 18** **NANO CRYSTALLINE STARCH AND ITS ALTERNATIF IMPLEMENTATION**
 Heny Herawati
Indonesia Center For Agricultural Postharvest Research and Development, INDONESIA
- MSD – 19** **COMPOSITE SPEEK WITH NANOPARTICLES FOR FUEL CELL'S APPLICATIONS: REVIEW**
 Arief Rahman Hakim
Department of Chemical Engineering, Diponegoro University, INDONESIA
- MSD – 20** **COMPARISON ON MODELLING OF DRYING KINETICS OF GRANULAR POLYMERS PA6 BY DIFFUSION MODELS AND NORMALIZATION METHOD**
 Suherman^a, Mirko Peglow^b, and Evangelos Tsotsas^b
^a *Chemical Engineering Department, Faculty of Engineering, Diponegoro University, Jl. Prof Sudharto, SH-Tembalang, Semarang, INDONESIA*
^b *Thermal Process Engineering, Otto-von-Guericke-University, Universitätsplatz 2, 39106 Magdeburg, GERMANY*

- MSD – 21 **CURRENT DENSITY PERFORMANCES IN POLY ETHER ETHER KETON MEMBRANE FOR DIRECT METHANOL FUEL CELLS**
Tutuk Djoko Kusworo^a, E. L. Dewi^b, D. K. Arti^a, A. Dhuhita^a, A. Fauzi Ismail^c and M.N.A. Mohd Norddin^c
^a *Chemical Engineering Department, Engineering Faculty, Diponegoro University, INDONESIA*
^b *Agency of Assessment and Application of Technology*
^c *Advanced Membrane Technology Research Centre, Faculty of Chemical and Natural Resources Engineering, Universiti Teknologi Malaysia, MALAYSIA*
- MSD – 22 **PREPARATION AND CHARACTERIZATION OF ZEOLITE MEMBRANE**
Aprilina Purbasari^a, Titik Istirokhatun^b, Heny Kusumayanti^a, Ariestya M. Devi^a, Lulluil Mahsunah^a, Heru Susanto^a
^a *Chemical Engineering Department, Faculty of Engineering, Diponegoro University, INDONESIA*
^b *Environmental Engineering Department, Faculty of Engineering, Diponegoro University, INDONESIA*
- MSD – 23 **EFFECT OF SOIL BURIAL ON THE MECHANICAL PROPERTIES OF HEAT TREATED AND UNTREATED RED BALAU SAW DUST FILLED LDPE COMPOSITES.**
Ruth Anayimi Lafia-Araga, Aziz Hassan, Rosiyah Yahya, Normasmira Abd. Rahma
Chemistry Department, Faculty of Science, University of Malaya, Malaysia
- MSD – 24 **IMPACT AND DSC PROPERTIES OF HEAT TREATED AND UNTREATED RED BALAU (SHOREA DIPTEROCARPACEAE)/LDPE COMPOSITES**
Aziz Hassan, R.A. Lafia-Araga, R. Yahaya and N.A. Rahman
Department of Chemistry, University of Malaya, Malaysia
- MSD – 25 **COMPUTATION OF INTERFACIAL SHEAR STRENGTH AND OTHER TENSILE RELATED PROPERTIES OF INJECTION MOULDED CARBON FIBRE/POLYAMIDE 6,6**
Rosiyah Yahya, Aziz Hassan, Zulkifli Abu Hasan
Department of Chemistry, University of Malaya, 50603 Kuala Lumpur, MALAYSIA.
- MSD – 26 **IMPACT PROPERTIES OF INJECTION MOULDED ARAMID/CARBON HYBRID FIBRE REINFORCED POLYPROPYLENE COMPOSITES**
MIM Rafiq and Aziz Hassan
Department of Chemistry, University of Malaya, MALAYSIA
- MSD – 27 **HARDNESS OF CONTINUOUS HARD ANODIZING OF ALUMINIUM 6061 AFFECTED BY VOLTAGE AND TIME PROCESS USING TITANIUM CATHODE**
Endi Sutikno, Ellen Desta Purwanendra, Putu Hadi Setyarini
Mechanical Engineering Department, Brawijaya University, INDONESIA
- MSD – 28 **SURFACE CHARACTERISTICS OF ALUMINIUM HARD ANODIZING USING TITANIUM CATHODE**
Putu Hadi Setyarini, Riviero Givenchy, Endi Sutikno
Mechanical Engineering Department, Brawijaya University, INDONESIA
-

PSE – PROCESS AND SYSTEM ENGINEERING

- [PSE – 01](#) **THE PROCESS TRANSPORT OF DRYING CORN WITH MIXED-ADSORPTION DRYING**
Mohamad Djaeni, Luqman Buchori
Chemical Engineering Department, Faculty of Engineering, Diponegoro University, INDONESIA
- [PSE – 02](#) **SIMULATION OF DUPLEX HEAT TREATMENT NB3SN COMPOUNDS IN CU-NB-SN SUPERCONDUCTING MULTIFILAMENTARY WIRE**
Andini Nur Vania Swari, Arimaz Hangga, Doty Dewi Risanti
Department of Engineering Physics, Faculty of Industrial Technology, ITS, INDONESIA

- PSE – 03** **INVENTORY ANALYSIS OF RADIOLOGICAL FOR GRAPHITE THERMAL COLUMN FROM TRIGA MARK II REACTOR, BANDUNG**
Mulyono Daryoko
Radioactive Waste Technology Center, BATAN, INDONESIA
- PSE – 04** **DYNAMIC SIMULATION AND COMPOSITION CONTROL IN A 10 L MIXING TANK**
Yulius Dedy Hermawan
Chemical Engineering Department, Faculty of Industrial Technology, UPN “Veteran” Yogyakarta, INDONESIA
- PSE – 05** **THE EFFECT OF LOADING ON THE CONTACT STRESS OF UHMWPE MATERIAL FOR ARTIFICIAL HIP JOINT BEARING**
Eko Saputra^a, Rifky Ismail^a, Jamari^a and Iwan Budiwan Anwar^b
^a *Laboratory for Engineering Design and Tribology, Department of Mechanical Engineering, University of Diponegoro, INDONESIA*
^b *Orthopaedic Hospital dr. Soeharso, Solo, INDONESIA*
- PSE – 06** **SIMULATION OF COUNTER BLOW PROCESS OF PBL QUARTZ BOTTLE FABRICATION**
Arimaz Hangga, Lizda Johar Mawarani, Doty Dewi Risanti
Department of Engineering Physics, Faculty of Industrial Technology, Institut Teknologi Sepuluh Nopember, INDONESIA
- PSE – 07** **CADMIUM METALS PARTICLES-COVERED POLYSTYRENE NANOSPHERES THIN FILM MATERIAL:FABRICATION, ANALYSIS AND MODEL**
Pratama Jujur Wibawa^{a,b,c}, Hashim Saim^d, Moh^d. Arif Agam^d and Hadi Nur^e
^a *Microelectronic and Nanotechnology-Shamsuddin Research Center (MiNT-SRC), Universiti Tun Hussein Onn Malaysia, MALAYSIA*
^b *Department of Chemistry, Faculty of Science, Technology and Human Development Universiti Tun Hussein Onn Malaysia, MALAYSIA*
^c *Department of Chemistry, Faculty of Sciences and Mathematics (formerly Faculty of Mathematics and Natural Sciences), INDONESIA*
^d *Department of Physics, Faculty of Sciences, Technology and Human Development, Universiti Tun Hussein Onn Malaysia, MALAYSIA*
^e *Ibnu Sina Institute for Fundamental Science Studies, Universiti Teknologi Malaysia, MALAYSIA*
- PSE - 08** **DISTRIBUTION TEMPERATURE OF ANALYSIS ON CH4-CO2 GAS MIXED IN DOUBLE PIPE HEAT EXCHANGER BY CONTROLLED FEEZE OUT AREA METHODE**
Fatma Y. Hasyim, Novi E. Mayangsari, and Sumarno
Material of Laboratory
Chemical Engineering Department, Faculty of Industry Technology, Sepuluh Nopember Institut of Technology Surabaya, INDONESIA
- PSE – 09** **SIMULATION ON THE ACTIVITY OF BIOMASS IN ACTIVATED SLUDGE IN THE PERFORMANCE OF NON IDEAL FLOW MEMBRANE BIOREACTOR SUBMERGED**
Aisyah Endah Palupi
Mechanical Engineering Department, Engineering Faculty, State University of Surabaya 60231 – INDONESIA
- PSE – 11** **EFFICACY AND HEAT TRANSFER EFFECTS OF ARTOCARPUS ALTILIS MALE INFLORESCENSE AS MOSQUITO VAPORIZING MATS**
Muhammad Khamim Asy’Ari^a, Nadhifa Maulida^a, Wilujeng Fitri Alfiah^a, Aisyiah Nur Isaneni^a Titin Yulia Riska^a, and Doty Risanti^b
^a *Metrology and Instrumentation Diploma III Dept. of Engineering Physics Faculty of Industrial Engineering Institut Teknologi Sepuluh Nopember Surabaya, INDONESIA* .
^b *Dept. of Engineering Physics Faculty of Industrial Engineering Institut Teknologi Sepuluh Nopember Surabaya, INDONESIA* .

- PSE – 12 **SELECTION OF NATURAL DYE PHOTOSENSITIZER FOR QUASI-SOLID STATE DYE-SENSITIZED MESOPOROUS TiO₂ SOLAR CELL (DSC) FABRICATION**
Ruri Agung Wahyuono, Doty Dewi Risanti
Department of Engineering Physics, Institut Teknologi Sepuluh Nopember Surabaya, INDONESIA
- PSE – 13 **AN INVESTIGATION OF CHAR FORMATION AND SHRINKING VOLUME BY VISUALIZATION TECHNIQUE INDUCED BY PYROLYSIS**
Widya Wijayanti
Mechanical Engineering Department, Brawijaya University, INDONESIA
-

SPE – SEPARATION PROCESS ENGINEERING

- [SPE – 01](#) **UTILIZATION OF COAL FLY ASH AS CO GAS ADSORBENT**
Ayu Lasryza, Dyah Sawitri
Department of Engineering Physics, Faculty of Industrial Technology, ITS, INDONESIA
- [SPE – 02](#) **PHENOL REMOVAL FROM AQUEOUS SOLUTIONS BY ELECTROCOAGULATION TECHNOLOGY USING IRON ELECTRODES: EFFECT OF SOME VARIABLES**
Mohammad Ali Zazouli^a, Mahmoud Taghavi^b
^a *Department of Environmental Health Engineering, Faculty of Health and Health Sciences Research Center, IRAN*
^b *Department of Environmental Health Engineering, Faculty of Health and Health Sciences Research Center, IRAN*
- [SPE – 03](#) **THE OFF GAS TREATMENT IN THE PROCESS OF VITRIFICATION AND INCINERATION OF NUCLEAR WASTE**
Herlan Martono, Aisyah
Radioactive Waste Technology Centre, BATAN, INDONESIA
- [SPE – 04](#) **ESSENTIAL OIL EXTRACTION OF FENNEL SEED (FOENICULUM VULGARE) USING STEAM DISTILLATION**
Astrilia Damayanti and Eko Setyawan
Chemical Engineering Department, Faculty of Engineering, Semarang State University, INDONESIA
- [SPE – 05](#) **PREPARATION AND CHARACTERIZATION OF NANOFILTRATION MEMBRANE FOR WATER TREATMENT**
Tutuk Djoko Kusworo, Eka Cahya Muliawati and Ardian Dwi Yudhistira
Department of Chemical Engineering, Diponegoro University, INDONESIA
- [SPE – 06](#) **THE APPLICATION OF NITROGEN LASER ON EXTRACTION OF URANIUM IN THE LONG LIFE OF HIGH LEVEL RADIOACTIVE LIQUID WASTE USING TBP-KEROSENE SOLVENT**
Gunandjar
Radioactive Waste Technology Center, National Nuclear Energy Agency of Indonesia (BATAN), INDONESIA
- [SPE – 07](#) **EFFECT OF PH AND STIRRING SPEED ON THE COLLAGENOUS PROTEIN EXTRACTION FROM CHICKEN BONE WASTE IN A WELL AGITATED EXTRACTION SYSTEM**
Andri Cahyo Kumoro, Beatrice L. M. Tanjung, Fadilla H. Utami, Diah Susetyo Retnowati and Catarina Sri Budiayati
Department of Chemical Engineering, Diponegoro University, INDONESIA
- [SPE – 08](#) **DRYING OF CURCUMA (CURCUMA XANTHORRHIZA ROXB) USING DOUBLE PLATE COLLECTOR SOLAR DRYER**
Tjukup Marnoto, Mahreni, Wasir Nuri, Bayu Ardinanto, Ratna E. Puspitasari
Chemical Engineering Department, Faculty of Industrial Technology, UPN "Veteran" Yogyakarta University, INDONESIA

- SPE – 09 SOLUBILITY EXAMINATION OF PALM KERNEL OIL IN SUPERCRITICAL CO₂ AND ITS CORRELATION WITH SOLVENT DENSITY BASED MODEL**
 Wahyu Bahari Setianto^a, Priyo Atmaji^b and Didi Dwi Anggoro^b
^a Center for Agroindustrial Technology, Agency for the Assessment and Application of Technology, INDONESIA
^b Department of Chemical Engineering, Diponegoro University, INDONESIA
- SPE – 10 Oil Extraction Process From Solid Waste Rubber Seed By Soxhletation and Extraction Solvent by Stirring Methods**
 Achmad Wildan, Devina Ingrid A, Indah Hartati
 Sekolah Tinggi Ilmu Farmasi “Yayasan Pharmasi” Semarang
 Jl. Sarwo Edhie Wibowo Km. 1 Plamongansari, Pucanggading Semarang INDONESIA
- SPE – 11 FOULING AND REJECTION BEHAVIOUR OF ULTRAFILTRATION FOR OIL IN WATER EMULSION SEPARATION**
 Nita Aryanti^a, Agus Hadiyanto^a, Wiharyanto Oktiawan^b
^a Chemical Engineering Department, Diponegoro University, INDONESIA
^b Environmental Engineering Department, Diponegoro University, INDONESIA
- SPE – 12 THE EFFECT OF CHEMICAL ADDITIVES ON MOBILITY OF HEAVY METALS (PB, CD AND ZN) IN SOIL**
 Abdoliman Amouei^a, Amirhossein Mahvi^b, Masoumeh Tahmasbizadeh^b, Mohammad Ali Zazouli^c
^a Department of Environmental Health Engineering, Babol University of Medical Sciences, IRAN
^b Department of Environmental Health Engineering, Tehran University of Medical Sciences, IRAN
^c Department of Environmental Health Engineering, Faculty of Health and Health Sciences Research Center, Mazandaran University of Medical Sciences, IRAN
- SPE – 13 CHARACTERISTICS OF HOSPITAL WASTEWATER IN BABOL UNIVERSITY OF MEDICAL SCIENCES AND EFFECTS ON THE ENVIRONMENT**
 Abdoliman Amouei^a, Hosseinali Asgharnia^a, Hourieh Fallah^a, Aliakbar Mohammadi^a, Mohammad Ali Zazouli^b
^a Department of Environmental Health Engineering, Babol University of Medical Sciences, IRAN.
^b Department of Environmental Health Engineering, Faculty of Health and Health Sciences Research Center, Mazandaran University of Medical Sciences, Sari, IRAN
- SPE – 14 QUANTITY AND QUALITY OF SOLIDWASTES IN THE HOSPITALS OF BABOL UNIVERSITY OF MEDICAL SCIENCES, NORTH OF IRAN**
 Abdoliman Amouei^a, Masoumeh Tahmasbizadeh^b, Hosseinali Asgharnia^a, Hourieh Fallah^a, Aliakbar Mohammadi^a, Mohammad Ali Zazouli^c
^a Department of Environmental Health Engineering, Babol University of Medical Sciences, IRAN
^b Department of Environmental Health Engineering, Tehran University of Medical Sciences, IRAN
^c Department of Environmental Health Engineering, Faculty of Health and Health Sciences Research Center, Mazandaran University of Medical Sciences, IRAN
- SPE – 15 EVALUATION OF PHENOL REMOVAL FROM AQUEOUS SOLUTIONS BY AZZOLA**
 Davaud Balarak^a, Mohammad Ali Zazouli^b
^a University Mazandaran – Sari, IRAN
^b Department of Environmental Health Engineering, Faculty of Health and Health Sciences Research Center, Mazandaran University of Medical Sciences, IRAN
- SPE – 16 SILICA EXTRACTION FROM BAGGASE FLY ASH WITH ALKALI FUSION METHOD**
 Galuh Pinayungan, Arif Hidayat, Chandra Wahyu Purnomo, Arief Budiman
 Process System Engineering Research Group, Chemical Engineering Department, Gadjah Mada University, INDONESIA

The Process Transport of Drying Corn With Mixed-Adsorption Drying

Mohamad Djaeni, Luqman Buchori

*Chemical Engineering Department, Faculty of Engineering, Diponegoro University,
Jl. Prof Sudharto, SH-Tembalang, Semarang INDONESIA
E-mail: mdjaeni.undip@gmail.com, m.djaeni@undip.ac.id*

Abstract :

Mixed-adsorption drying with adsorptive material such as zeolite is an option to enhance the performance of drying corn. In this case, zeolite and seeds are mixed and fluidized by warm air as drying medium. The air will evaporate water from seed, and at the same time, zeolite will adsorb vapor from air. Thus, the humidity of air in dryer can be kept low in which improves the driving force for drying. So, the process can be more efficient in low or medium temperature and the corn quality can be retained.

This paper discusses the process transport of the drying formulated in two dimensional modelling. In this case, the drying rate and water diffusivity in corn was estimated with experimental data. While, the adsorption rate and diffusivity of water in zeolite as well as other important process constants was assumed based on literature. Results showed that the drying can run well and the model can describe the profiles of moisture and temperature in corn and zeolite. It can be also noted that saturation time of zeolites particles is faster than drying time of corn. It means that more zeolite is required in the mixture to keep driving force being still high.

Keywords: mixed adsorption drying, process transport, modelling, diffusivity, zeolite

1. Introduction

Corn (*Zea mays* L.) is one of main food resources in the world. It contains carbohydrate, protein, and edible oil [1]. Postharvest treatment such as drying is an important steps to produce high quality of corn since it determines the water content and ingredients and long life storage.

Currently, there are several drying process applied for corn, for example: direct sun drying, hot air drying, microwave, fluidization, and vacuum freeze drying. Direct sun drying is the simplest one but weather dependency for dry product quality as well as process continuity [2]. Hot-air drying is usually applied to dry corn at rotary or fluidized bed dryer. An important consideration with this process is the air temperature that increases drying rate, shortens drying time. But the higher temperature decreases corn quality. Haros et.al (2003) found that increasing temperature higher than 110°C reduces starch yield drastically [3]. In addition, the solubility indexes of albumin, globulin, and zein also decreases at higher temperature [4].

Momenzadeh, et al (2011) tried to improve the performance of fluidized bed dryer completed with microwave heating [5]. Various temperature was also observed from 30-60°C which indicated the increasing 10oC, the drying time can be reduced up to 5%. By introducing microwave heating, the drying time can be reduced up to 50% [5]. Based on the Nair, et al (2011), the microwave applied in drying corn can reduce germination [6]. However, the amount of energy usage will be another problem to be solved.

The researcher also attempted to increase the performance of fluidized corn and rice by implementing two stage dryer [7]. The process can reduce the operational temperature as well as improving the quality of corn during storage. However, the operating temperature is still higher than 60°C then the ingredients degradation has to be more considered.

Mixed-adsorption drying with water adsorbent such as zeolite or other solid adsorbents is an option to improve product quality as well as energy efficiency for fluidized. The method is firstly published by Falabella et al (1991) with bentonite clay. However, they cannot find the significant improvement [8]. Perhaps, this was due to the performance of adsorbent that was low affinity to water under drying condition. Positive results were published by Alikhan, et al (1992) and Revila et al (2006) who dried grain (corn, and seed) with zeolite [9,10]. Based on Revila et al (2006), the effect of zeolite to water removal from a product is the most superior compared to silica, alumina, sand and pillared clay [10].

In mixed adsorption dryer, zeolite and the seed product such as corn are mixed in a column and fluidized by air as drying medium. The air will evaporate water from the product, and at the same time, zeolite will adsorb

vapour from air. As results, air humidity can be kept low. Moreover, operational temperature can be maintained at the certain condition due to the latent heat of adsorption. Thus, the driving force of drying can be kept high.

Zeolite is an alumino-silicate compound with tetrahedral bound linked by oxygen. Atom Al is negative that can be neralized by cation. The exchangeable cation affects the adsorption ability of zeolite. Beside that, the ability is also influenced by Si/Al ratio, surface area, and size of zeolite pore [11- 13]. In Indonesia, the natural zeolite is available in market. Even, the potential of zeolite production is high [14]. However, adsorbing capacity of natural zeolite is too low rounding 0.07-0.09 gr water/gr dry zeolite. By activation using KOH or NaOH, the adsorbing capacity can be enhanced up to 0.15-0.20 gr water/gr zeolite.

This paper discusses the effect of the activated natural zeolite to dry corn. As comparison, the commercial Zeolite 3A obtained from Zeochem was also used. Each zeolite was mixed with corn at various weight percentage and temperature. Their performance in term of drying rate was observed and compared.

2. Material and Methods

2.1. Principle of Mixed-Adsorption Dryer

Figure 1 presents the phenomena of mixed-adsorption dryer with zeolite. In the process, the dry air will contact with corn. The sensible heat of air is transferred to heat up the surface of corn, and water will be evaporated (endothermic process). Parallel with the process, the zeolite having affinity to water, will adsorb water from air quickly by releasing adsorption heat (exothermic process). The heat is transferred to the air than can compensate sensible heat transferred to corn. Hence, two advantageous will be obtained from the process: temperature of air can be kept warm/medium by adsorption heat of water, and humidity of air during drying can be kept low. So, the driving force of drying can be kept high. The process occurs simultaneously and repeated several times until zeolite saturated by water.

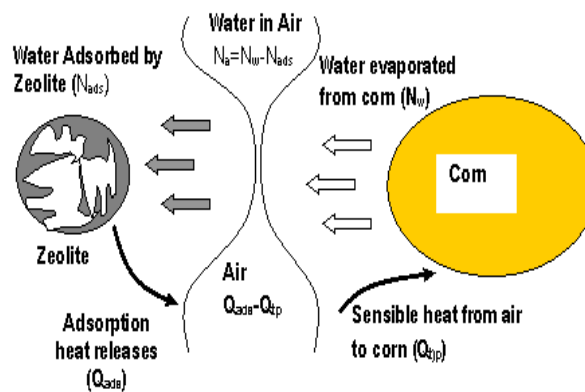


Figure 1. Mixed-Adsorption Dryer With Zeolite

The most important point here is the operational temperature that affects the driving force of adsorption and drying as well as product quality. In the higher temperature, equilibrium moisture (water loaded capacity) both for product and zeolite is lower. In this case, the driving force for drying will be higher, but it will be lower for adsorption. Considering to the protein and starch content in corn, the operational temperature is not more than 60oC. In this operational temperature, the adsorption capacity of zeolite is still higher. By assuming that the adsorption rate of vapor in zeolite is faster than that of desorption of water from corn, the water transport for mixed adsorption drying views the desorption rate as follows:

Water in corn

Water diffusivity corn ($m^2 \cdot s^{-1}$) can be derived from the following equation:

$$\ln\left(\frac{q_{e,p} - q_{w,p}}{q_{e,p} - q_{e,0}}\right) = \ln\left(\frac{8}{\pi^2}\right) - \frac{\pi^2 D_w t}{l^2} \quad [1]$$

The water will desorb from inside to the surface of corn when the value of $q_{e,p}$ is lower than that of $q_{w,p}$. From the product properties the equilibrium moisture refers to Oswin's equation [15]:

$$q_{e,p} = \left(\frac{13.77 - 0.077T_a}{100}\right) \left(\frac{a_w}{1 - a_w}\right)^{0.33} \quad [2]$$

Where, $q_{e,d}$ is the equilibrium moisture refers to Oswin's equation, kg water per kg dry corn [15], t is sampling/operational time (s), $q_{w,p}$ is the moisture in corn at operational time, kg water per kg dry corn, k_{dry} is drying rate of corn, s^{-1} , a_w is the water activity equals to relative humidity (RH) and T_a is air temperature ($^{\circ}C$).

By knowing $q_{e,p}$ and measuring $q_{w,p}$, the value of D_w at every operational temperature can be estimated.

$$D_w = D_0 \exp\left(\frac{B}{273.15 + T_a}\right) \quad [3]$$

D_0 is a constant of diffusion ($m^2 \cdot s^{-1}$), B is the activation energy ($J \cdot kmole^{-1}$) divided by R (the constant of ideal gas ($8.314 J \cdot mole^{-1} \cdot K^{-1}$)).

2.2. Experimental set up

The research aimed to study the presence of Zeolite 3A (provided by Zeochem, Switzerland), air velocity, and operating temperature on the diffusivity of water in corn. The process was conducted in fluidized bed dryer (see Figure 2). As a sample, the sweet corn harvested from local farmer in Semarang was used with initial water content 35-40%, average bulk density 840 kg/m³, and dimension of length, width, and thickness 8.5x6.5x2.8 mm.

In the first step, Zeolite 3A and corn were mixed with certain zeolite percentage (supposed 50%) with a total weigh of 50 gram. The mixture was then fluidized using warm air in dryer colum (ID 5 cm H 50 cm) at 40 $^{\circ}C$ and linear air velocity 3 m/sec. The response, water content in corn was measured every 10 minutes during 2 hours with gravimetry. The water diffusivity was then calculated refers to the Equation 1. The procedure was repeated for a percentage of Zeolite 3A 25%, without zeolite (0%), and operating temperature 30 $^{\circ}C$ and 50 $^{\circ}C$.

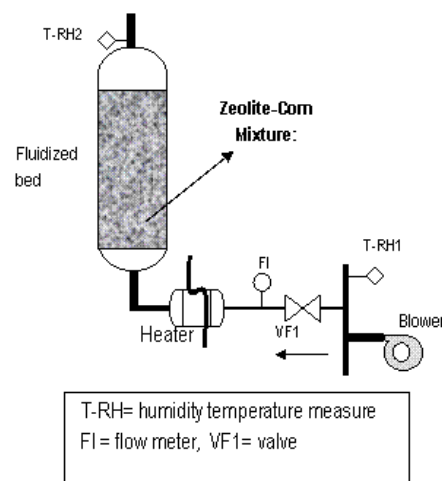


Figure 2. Fluidized bed mixed-adsorption dryer

3. Result and Discussion.

3.1. Effect of Zeolite

Zeolite 3A give positive effects on drying corn as indicated in water content during operation. The presence of zeolites can speed up water removal as indicated in Figure 3. For example, at the same operational time the water content of corn dried with zeolite is lower than that of without zeolite (zeolite 0%). It means that the zeolite can improve driving force for drying or keep it high by adsorbing water from the air as drying medium.

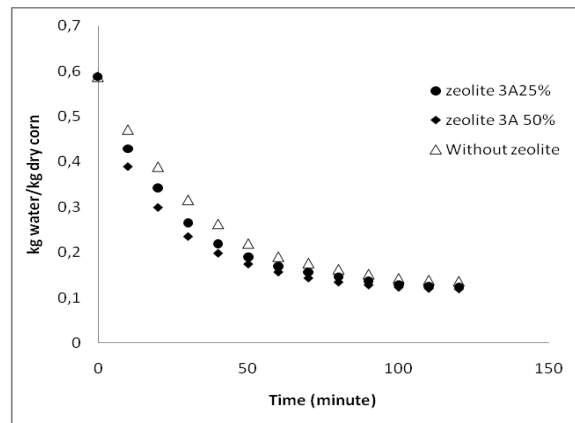


Figure 3. Comparison of water removal in corn at operational drying 40°C

3.2. Effect of Operating temperature

The temperature takes important role for both desorption and adsorption of water. At higher temperature, equilibrium moisture in materials (zeolite and corn) is lower [2, 16]. It means that water loaded in both material decreases. In this case, driving force for drying increases. In addition, the capacity of the air for evaporating water increases significantly. Hence, higher temperature, higher water can be evaporated from material (see Figure 4). Using equation 1, the higher temperature, the diffusivity of water in corn increases (see Table 1). The constant process regarding to the equation 3, can be estimated.

In general, the increase of temperature will inhibit the adsorption process because of reducing water loaded capacity. But using zeolite and current operational temperature, the effect does not change significantly.

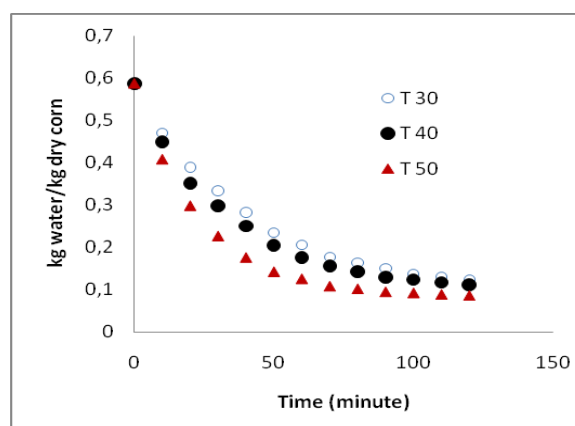


Figure 4. Water in corn versus time at different operating temperature for natural zeolite (25%)

Table 1. Moisture diffusivity, whiteness and gel strength of carrageenan at different temperature

Temperature, °C	$D_w \times 10^{-10}, m^2 \cdot s^{-1}$	
30 (303.15 K)	6.90	$D_0 = 3.00 \times 10^{-13}$ $B = 0.024K$
40 (313.15 K)	8.11	
50 (325.15 K)	11.36	

3.3. Water and Temperature Profile

Based on Figure 1, the water and heat transfer can be formulated in partial differential equation. Assuming that, both corn and zeolite are spheres, the accumulation of water is a function of water transport due to the diffusion, and water uptake/release [2]:

$$\frac{dq_{w,s}}{dt} = D_w \nabla^2 q_{w,s} \pm \text{rate of water transfer} \quad [4]$$

The accumulation of water in air is similar [2]:

$$\frac{dq_{v,a}}{dt} = D_v \nabla^2 q_{v,a} - F_a \nabla q_{v,a} \mp \text{rate of water transfer} \quad [5]$$

Where, $q_{w,s}$ is water in solid material (zeolite or corn) in kg water per kg dry solid, $q_{v,a}$ is water in air (kg water/kg dry air), F_a is the flow of air ($m^2 \cdot s^{-1}$), D_w and D_v are the diffusion of water in solid ($8 \times 10^{-7} m^2 \cdot s^{-1}$ for zeolite [16]) and vapor in air (around $3.0 \times 10^{-6} m^2 \cdot s^{-1}$ [17]), respectively. Because the air flow is turbulence, the water in air closes to steady.

The accumulation of energy in the zeolite or corn is a function of conductive and convective heat transport, the amount of energy involved in adsorption/desorption and the energy exchange with the air:

$$\rho_s cp_s \frac{dT_s}{dt} = k_s \nabla^2 T_s \pm \left[\begin{array}{l} \text{adsorption} \\ \text{desorption} \end{array} \right] \text{heat} \pm \text{heat transfered} \quad [6]$$

Where, ρ_s is the density of solid (zeolite and corn), cp_s is the specific heat of corn and zeolite ($kJ \cdot kg^{-1} \cdot ^\circ C^{-1}$), and k_s is the conductivity of material ($kJ \cdot m^{-1} \cdot s^{-1}$) [2,15,16,18]. For instant, it is assumed the conductivity of corn and zeolite is comparable.

The accumulation of energy in air is a function of conductive and convective heat transport and the energy exchange with the zeolite [2]:

$$\rho_a cp_a \frac{dT_a}{dt} = k_a \nabla^2 T_a - F_a \rho_a cp_a \nabla T_a \mp \text{heat transfered} \quad [7]$$

Where, ρ_a is the density of solid (zeolite and corn), cp_a is the specific heat of air ($kJ \cdot kg^{-1} \cdot ^\circ C^{-1}$), and k_a is the conductivity of material ($kJ \cdot m^{-1} \cdot s^{-1}$) [2,15,16,18]. Because the air flow is turbulence, the accumulation of heat in air closes to zero.

Using equation 4-7, the profile of water and temperature in corn and zeolite can be simulated by Femlab (COMSOL) as illustrated in figure 5 and 6. Figures 5 presents the profiles for moisture content in zeolite and corn at operation time 3600 s (60 minutes) and drying temperature 60oC. Firstly, the air contacts with the surface of corn. Then, the moisture in the surface is evaporated, and the water concentration decreases. Due to the different concentration, the water diffuses from the inside to the surface. After 60 minute, the water in corn can reach 12% as expected. The vapour in the air is adsorbed by zeolite. With higher adsorption rate, porosity and diffusivity, the zeolite saturation can run quickly [17].

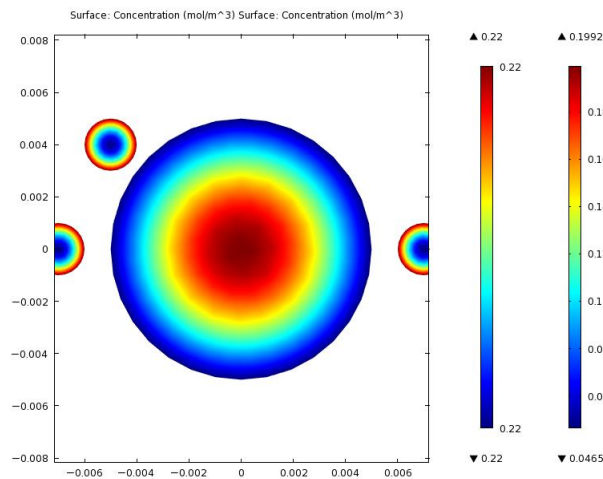


Figure 5. Profile of moisture in zeolite, and corn at time 60 minutes and temperature 60°C (333.15 K)

Figure 6 presents the profiles of temperature of corn, and zeolite at operating temperature 60°C. The air introduces heat in the surface of corn. The surface temperature increases and the heat moves from the surface to the inside layer. However, for operational time 60 minutes, the temperature difference is not significant.

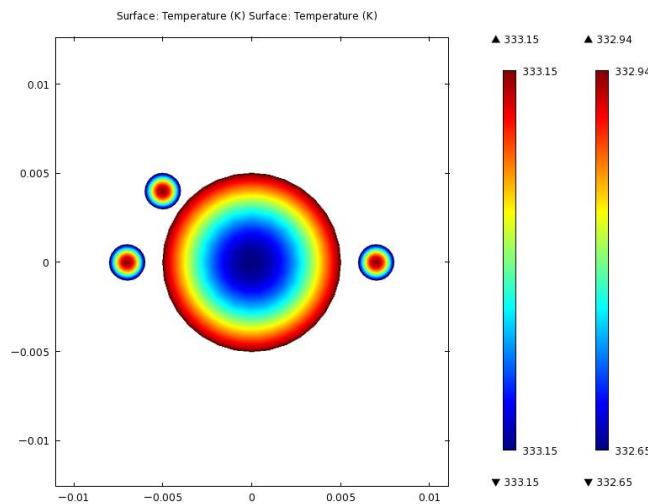


Figure 6. Profile of temperature in zeolite and corn at time 60 minutes and temperature 60°C (333.15 K)

4. Conclusion

Mixed-adsorption drying with adsorptive material such as zeolite can enhance the performance of drying corn. The result showed that the drying time can be faster with zeolite. In addition, transfer of water from corn to air can be positively improved. Using the estimated diffusivity, the transport of water and temperature in zeolite, corn, and air can be predicted by the partial differential model. The model can describe the profiles of moisture and temperature in corn, and zeolite. It can be also noted that saturation time of zeolites particles is faster than drying time of corn. So, more zeolite is required in the mixture to keep driving force being still high.

Acknowledgement

The research was funded by Directory of High Education (DGHE), Ministry of National Education Indonesia. The model simulation was performed using feqlab (COMSOL) facilitated in the System and Control Group, Agrotechnology and Food Science, Wageningen University. The Zeolite 3A was provided by Zeochem, Switzerland.

References

- [1] George W. Dickerson (2003). Nutritional Analysis of New Mexico Blue Corn and Dent Corn Kernels. New Mexico State University (<http://aces.nmsu.edu> accessed October 23, 2011)
- [2] Djaeni, M. (2008), Energy efficient multistage zeolite dryer for heat sensitive products. Doctoral Thesis, Wageningen University, The Netherlands
- [3] Haros, M.; Tolaba, M.P.; Suárez, C. Influence of corn drying on its quality for the wet-milling process. *Journal of Food Engineering* 2003, 60, 177-184
- [4] Malumba, P.; Janas, S.; Masimango, T.; Sindic, M.; Deroanne, C.; Béra, F. Influence of drying temperature on the wet-milling performance and the proteins solubility indexes of corn kernels. *Journal of Food Engineering* 2009, 95(3), 393-399
- [5] Momenzadeh, L.; Zomorodian, A.; Mowla, D. Experimental and theoretical investigation of shelled corn drying in microwave-assisted fluidized bed dryer using artificial neural network. *Food and Bioproducts Processing* 2011, 89(1), 15-21
- [6] Nair, G.R.; Li, Z.; Garipey, Y., Raghavan, V. Microwave drying of corn (*Zea mays L. ssp*) for the seed industry. *Drying Technology* 2011, 29, 1291-1296
- [7] Jittanit, W.; Srzednicki, G.; Driscoll, R. Corn, rice, and wheat seed drying by two-stage concept. *Drying Technology* 2010, 28(6), 807-815
- [8] Falabella, M.C.; Suarez, C.; Viollaz, P.E. Drying kinetics of corn with a solid adsorbent. *Journal of Food Engineering* 1991, 13(4), 273-283
- [9] Alikhan, Z.; G.S.V. Raghavan; A.S. Mujumdar (1992), Adsorption drying of corn in zeolite granules using a rotary drum. *Drying Technology*, Vol. 10(3); 783-797
- [10] Revilla, G.O.; T.G. Velázquez; S.L. Cortés.; S.A. Cárdenas (2006), Immersion drying of wheat using Al-PILC, zeolite, clay, and sand as particulate media. *Drying Technology* 24(8), 1033-1038
- [11] Ozkan F.C., Ulku S., 2008, Diffusion Mechanism of Water Vapour in A Zeolitic Tuff Rich in Clinoptilolite, *Journal of Thermal Analysis and Calorimetry* 94, 699-702.
- [12] Ackley M.W, Rege S.U., Saxena H., 2003, Application of Natural Zeolites in The Purification and Separation of Gases, *Journal Microporous and Mesoporous Materials* 61, 25-42.
- [13] Gruszkiewics M.S., Simonson JM, Burchell TD, Cole DR, 2005, Water Adsorption and Desorption on Microporous Solids at Elevated Temperature, *Journal of Thermal Analysis and Calorimetry* 81, 609-615.
- [14] Senda SP, Saputra H, Sholeh A, Rosjidi M, Mustafa A, 2006, Prospect of Product With Zeolite Application for Slow Release Substance and Membrane, *BPPT Bulletin, Indonesia*, ISSN 1410-9891
- [15] Gely, M.C.; Giner, S.A. Water-corn equilibrium: Temperature dependency of the GAB model parameters and calculation of the heat of sorption. *Drying Technology* 2000, 18(7), 1449-1464
- [16] Gorbach, A.; Stegmaier, M.; Eigenberger, G. Measurement and modeling of water vapor adsorption on zeolite 4A—Equilibria and kinetics. *Adsorption* 2004, 10; 29-46
- [17] Montgomery, R.B. (1947). Viscosity and thermal conductivity of air and diffusivity of water/vapour in air. *Journal of Meteorology* 4, 193-196
- [18] Djaeni, M.; P.V. Bartels; C.J. van Asselt; J.P.M. Sanders.; G. van Straten; A.J.B. van Boxtel (2011), Low temperature drying with air dehumidified by zeolite for food products: Energy efficiency aspect analysis. *International Journal of Food Engineering*, Vol. 7(6); article 4

Author Index

Abdullah	BRE.14-1	Hidayati, N.	MSD.16-1
Adelia, C.	MSD.01-1	Ingrid A., D.	SPE.10-1
Adhelia, C.	BRE.01-1	Ismail, A. F.	MSD.21-1
Agam, M. A.	PSE.07-1	Ismail, R.	MSD.05-1 , MSD.12-1
Agustriyanto, R.	BRE.01-1 , BRE.16-1		PSE.05-1
Aini, A. P.	BRE.17-1	Istadi	BRE.18-1
Aisyah	SPE.03-1	Istirokhatun, T.	MSD.22-1
Altway, A.	BRE.08-1		
Amanda, N.	MSD.16-1	Jamari	MSD.04-1 , MSD.05-1
Amin, M.	MSD.08-1		MSD.10-1 , MSD.11-1 , MSD.12-1
Andrea, L.	MSD.01-1	Junaidi	BRE.12-1
Angelina, M.	BRE.16-1		
Anggoro, D. D.	BRE.18-1 , MSD.03-1	Kristijarti, A. P.	MSD.01-1
	SPE.09-1	Kumoro, A. C.	SPE.07-1
Anwar, I. B.	PSE.05-1	Kurniasari, L.	BRE.13-1
Ardinanto, B.	SPE.08-1	Kurniawansyah, F.	MSD.13-1 , MSD.16-1
Ariyanti, D.	BRE.17-1	Kusmahetiningsiha, N.	MSD.07-1
Arti, D. K.	MSD.09-1 , MSD.21-1	Kusmiyati	BRE.04-1
Artiani, P. A.	BRE.12-1	Kusumayanti, H.	MSD.22-1
Aryanti, N.	SPE.11-1	Kusworo, T. D.	MSD.19-1 , SPE.05-1
Asri, N. P.	BRE.09-1	Kusworo, T.D	MSD.21-1
Atmaji, P.	SPE.09-1		
		Lasryza, A.	SPE.01-1
Buchori, L.	BRE.18-1 , PSE.01-1	Liasari, Y.	BRE.01-1
Budi, F. S.	MSD.03-1		
Budiarti, A.	BRE.13-1	Machmudah, S.	BRE.09-1
Budikarjono, K.	BRE.09-1	Mahreni	SPE.08-1
Budiyati, C. S.	SPE.07-1	Mahsunah, L.	MSD.22-1
		Marnoto, T.	SPE.08-1
Damajanti, N.	BRE.05-1	Martono, H.	SPE.03-1
Damayanti, A.	SPE.04-1	Ma'ruf, A.	BRE.05-1
Darmawatia, S.	MSD.08-1	Mawarani, L. J.	PSE.06-1
Daryoko, M.	PSE.03-1	Mayangsari, N. E.	PSE.08-1
Dermawan, D.	BRE.11-1	Mohammad	MSD.05-1
Devi, A. M.	MSD.22-1	Monica, R.	BRE.16-1
Deviana, M.	BRE.19-1	Muchammad	MSD.04-1 , MSD.10-1
Dewi, E. L.	MSD.09-1 , MSD.19-1 , MSD.21-1	Muliawati, E. C.	SPE.05-1
	MSD.21-1	Murwono, D.	BRE.17-1
Dhuhita, A.	MSD.21-1		
Dianratri, I.	BRE.19-1	Ningrum, E. O.	MSD.15-1
Djaeni, M.	PSE.01-1	Norddin, M. N. A. M	MSD.21-1
		Nugroho, A.	BRE.19-1
Fatmawati, A.	BRE.01-1 , BRE.16-1	Nur, H.	PSE.07-1
		Nur, M. M. A.	BRE.03-1
Goto, M.	BRE.09-1	Nurasid, T.	MSD.06-1
Gunandjar	SPE.06-1	Nuri, W.	SPE.08-1
		Nurjannah	BRE.10-1
Hadiyanto	BRE.03-1 , BRE.17-1 , BRE.21-1 , BRE.19-1		
	SPE.11-1	Oktiawan, W.	SPE.11-1
Hadiyanto, A.	MSD.19-1		
Hakim, A. R.	MSD.14-1	Padmawijaya, K. S.	MSD.16-1
Handaratri, A. R.	BRE.19-1	Paradita, K. O.	BRE.14-1
Handayani, N. A.	MSD.01-1	Paulina, J.	BRE.01-1
Handoko, T.	PSE.02-1 , PSE.06-1	Peglow, M.	MSD.20-1
Hangga, A.	MSD.15-1	Permanasari, A. R.	BRE.08-1
Hanggoro, A. W.	BRE.10-1	Pertiwi, D. S.	BRE.11-1
Hariprajitno, D.	BRE.03-1	Pinundi, D. S.	BRE.17-1
Hartanto, D. G	BRE.13-1 , SPE.10-1	Prabandari, E. E.	BRE.15-1
Hartati, I.	PSE.08-1	Pradeckta, L. S.	MSD.14-1
Hasyim, F. T.	MSD.17-1 , MSD.18-1	Pradnyandari, P. R	MSD.13-1
Herawati, H.	PSE.04-1	Pramisandi, A.	BRE.15-1
Hermawan, Y. D.	BRE.06-1	Pratondo, E.	MSD.15-1
Hersoelistyorini, W.	MSD.08-1		
Hidayati M., A.			

Pubasari, A.	MSD.22-1	Yudhistira, A. D.	SPE.05-1
Purba, E.	BRE.07-1	Yuliana, A.	MSD.14-1
Purbasari, A.	MSD.19-1	Yuliani, S.	MSD.17-1
Purnamasari, R.	MSD.17-1		
Puspitasari, R. E.	SPE.08-1	Zazouli, M. A.	SPE.02-1
Retnowati, D. S.	SPE.07-1		
Ririn Indriani AR	BRE.08-1		
Risanti, D. D.	PSE.02-1 , PSE.06-1		
Rochania, S.	MSD.06-1		
Roesyadi, A.	BRE.09-1 , BRE.10-1		
Rosa, E. S.	MSD.02-1		
Rusli, M. S.	MSD.17-1		
Saim, H.	PSE.07-1		
Salimin, Z.	BRE.12-1		
Saputra, E.	MSD.12-1 , PSE.05-1		
Sasaki, M.	BRE.09-1		
Savitri, E.	MSD.14-1		
Savitri, S. D.	BRE.10-1		
Sawitri, D.	MSD.07-1 , SPE.01-1		
Schipper, D. J.	MSD.10-1 , MSD.11-1		
	MSD.12-1		
Schippera, D. J.	MSD.04-1		
Setianto, W. B.	SPE.09-1		
Setiyana, B.	MSD.11-1 , MSD.12-1		
Setyawan, E.	SPE.04-1		
Shobih	MSD.02-1		
Siburian, K.	BRE.07-1		
Solikhah, R.	BRE.18-1		
Sugiyanto	MSD.05-1		
Suherman	MSD.20-1		
Sumarno	MSD.13-1 , MSD.14-1		
	MSD.15-1 , MSD.16-1		
	PSE.08-1		
Sunaryanto, R	BRE.02-1 , BRE.15-1		
Suprpto	BRE.09-1		
Susanto, H.	MSD.22-1		
Suyanto	BRE.15-1		
Swari, A. N. V.	PSE.02-1		
Syafa'at, I.	MSD.11-1 , MSD.12-1		
Taghavi, M.	SPE.02-1		
Tanjung, B. L. M.	SPE.07-1		
Tauviqirrahman, M.	MSD.04-1 , MSD.05-1		
Tauviqirrahman, M.	MSD.10-1		
Tetrisyanda, R.	MSD.13-1		
Tridayana, A.	BRE.04-1		
Trisanti, P. N.	MSD.13-1		
Tsotsas, E.	MSD.20-1		
Tungga D., E. M.	BRE.14-1		
Utama, S. C.	BRE.06-1		
Utami, F. H.	SPE.07-1		
Utami, I.	BRE.18-1		
Utami, T.	BRE.04-1		
Wahyudia, A.	MSD.06-1		
Wahyudiono	BRE.09-1		
Wawan	BRE.12-1		
Wibawa, P. J.	PSE.07-1		
Wibowo, A. D. K.	BRE.21-1		
Widayat	BRE.21-1 , BRE.14-1		
Widjaja, T.	BRE.08-1		
Widya FP., N.	BRE.04-1		
Wildan, A.	SPE.10-1		
Wisojodharmo, L. A.	MSD.09-1		



This is to certify

Muhammad Djaeni
as presenter

at the International Conference on
Chemical and Material Engineering

September 12 - 13, 2012
Semarang, Central Java, Indonesia

Department of Chemical Engineering
Diponegoro University

Dr. Ir. Budiyono, MSI
Head



ACKNOWLEDGEMENTS





INTERNATIONAL CONFERENCE ON CHEMICAL AND MATERIAL ENGINEERING



Department of Chemical Engineering
Faculty of Engineering, Diponegoro University
Kampus UNDIP Tembalang, Jl. Prof. Soedarto, SH
Semarang – Indonesia, 50279
Phone : +62 24 7460058 ; Fax : +62 24 76480675
Website : <http://icme.undip.ac.id>
E-mail : icme2012@undip.ac.id; icme2012@gmail.com