

DAFTAR PUSTAKA

1. Kashyap P, Dhongade H, Singh K, Ansari A, Bhagel P. Preparation and Evaluation of Acetaminophen Microparticles. *International Journal of Medical and Pharmaceutical Sciences*.2011;1(5):1-5
2. Forte JS. Paracetamol : Safety Versus Toxicity. *The Chronic Ill*.2002;6(6): p12-6
3. Knight TR, Kurtz A, Bajt ML, Hinson JA, Jaeschke H. Vascular and Hepatocellular Peroxynitrite Formation during Acetaminophen Toxicity: Role of Mitochondrial Oxidant Stress. *Toxicological Sciences*.2001;62: p212-20
4. Sabina EP, Pragasam SJ, Kumar S, Rasool M. 6-gingerol, an active ingredient of ginger, protects acetaminophen-induced hepatotoxicity in mice. *Zhong Xi Yi Jie He Xue Bao*. 2011;9(11): p1264-9
5. Lee CH, Kuo CY, Wang CJ, Wang CP, Lee YR, Hung CN, et al. A Polyphenol Extract of *Hibiscus sabdariffa* L. Ameliorates Acetaminophen-Induced Hepatic Steatosis by Attenuating the Mitochondrial Dysfunction in Vivo and in Vitro. *Biosci Biotechnol Biochem*. 2012;76(4): p646-51
6. Tatiya AU, Surana SJ, Sutar MP, Gamit NH. Hepatoprotective effect of poly herbal formulation against various hepatotoxic agents in rats. *Pharmacognosy Res*. 2012;4(1): p50-6
7. Yamaura K, Shimada M, Nakayama N, Ueno K. Protective effects of goldenseal (*Hydrastis canadensis* L.) on acetaminophen-induced hepatotoxicity through inhibition of CYP2E1 in rats. *Pharmacognosy Res*. 2011;3(4): p250-5
8. Koolman J, Roehm KH. *Tissues and Organs. Color Atlas of Biochemistry*. 2nd ed. New York: Thieme; 2005. p306-21
9. Uppsala University. Bioactivation and Toxicity. <http://www2.teknat.uu.se/forskning/uu/beskrivning.php?vetenskapsid=0&hfor skomr=11&id=230&lang=en> (accessed 27 January 2013).
10. Pessayre D, Larrey D. Toxic Liver Injury. In: Juan Rodés MD, Jean-Pierre Benhamou MD, Andres T. Blei MD, Jürg Reichen MD, Mario Rizzetto MD (eds.) *Textbook of Hepatology : From Basic Science to Clinical Practice*. 3rd ed. Australia: Blackwell Publishing; 2007. p1209-88

11. Heinloth AN, Irwin RD, Boorman GA, Nettesheim P, Fannin RD, Sieber SO, et al. Gene Expression Profiling of Rat Livers Reveals Indicators of Potential Adverse Effects. *Toxicological Sciences*.2004;80: p193-202
12. Jeremy E. Kaslow, M.D., F.A.C.P, F.A.C.A.A.I. Alkaline Phosphatase. http://www.drkaslow.com/html/alkaline_phosphatase.html (accessed 20 August 2013)
13. Schiele F, Henny J, Hitz J, Petltclerc C, Gueguen R, Siest G. Total Bone and Liver Alkaline Phosphatases in Plasma: Biological Variations and Reference Limits. *Clin Chem*.1983;29(4):634-641
14. Turan S, Topcu B, Gökçe I, Güran T, Atay Z, Omar A. Serum Alkaline Phosphatase Levels in Healthy Children and Evaluation of Alkaline Phosphatase z-scores in Different Types of Rickets. *Journal of Clinical Research in Pediatric Endocrinology*.2011;3(1):7-11
15. Cornell University. Alkaline phosphatase (AP, ALP, SAP). <https://ahdc.vet.cornell.edu/clinpath/modules/chem/alkphos.htm> (accessed 20 August 2013)
16. Bessems JGM and Vermeulen NPE. Paracetamol (Acetaminophen)-Induced Toxicity: Molecular and Biochemical Mechanisms, Analogues and Protective Approaches. *Critical Reviews in Toxicology*.2001;31(1):55-138
17. Brunton L, Lazo J, Parker K. Drug Metabolism. In: Laurence L. Brunton, PhD (eds.)*Goodman & Gilman's The Pharmacological Basis of Therapeutics*. 11th ed. eBook: McGraw Hill; 2006. p71-91
18. Hinson JA, Pike SL, Pumford NR, Mayeux PR. Nitrotyrosine-protein adducts in hepatic centrilobular areas following toxic doses of acetaminophen in mice. *Chem Res Toxicol*; 1998. 11:604–7
19. Pryor WA and Squadrito GL. The chemistry of peroxynitrite: a product from the reaction of nitric oxide with superoxide. *Am J Physiol*; 1995. 268(Pt 1):L699–L722
20. Radi R, Beckman JS, Bush KM, and Freeman BA. Peroxynitrite oxidation of sulfhydryls. The cytotoxic potential of superoxide and nitric oxide. *J Biol Chem*; 1991. 266: p4244–50
21. Beckman JS and Koppenol WH. Nitric oxide, superoxide, and peroxynitrite: the good, the bad and ugly. *Am J Physiol*; 1996. 271 (Pt 1):C1424–C1437
22. Zhao Y, Lee MJ, Cheung C, Ju JH, Chen YK, Liu B, et al. Analysis of Multiple Metabolites of Tocopherols and Tocotrienols in Mice and Humans. *Journal of Agricultural and Food Chemistry*.2010;58(8): p4844-52

23. Chun J, Lee J, Lin Ye, Exler J, Eitenmiller RR. Tocopherol and Tocotrienol Contents of Raw and Processed Fruits and Vegetables in the United States Diet. *Journal of Food Composition and Analysis*.2006;19: p196-204
24. Colombo ML. An Update on Vitamin E, Tocopherol and Tocotrienol— Perspectives. *Molecules*.2010;e.g. 32: p2103-13
25. Burton GW, Traber MG. Vitamin E: Antioxidant Activity, Biokinetics, and Bioavailability. *Annual Reviews*.1990;10(): p357-82
26. Packer, J. E., Slater, T. F., Willson, R. L. Direct observation of a free radical interaction between vitamin E and vitamin C.1979;
27. Ben Best. General AntiOxidant Actions. <http://www.benbest.com/nutrceut/AntiOxidants.html#contents> (accessed 31 July 2013)

LAMPIRAN

Lampiran 1. Ethical Clearance



UNIVERSITAS GADJAH MADA
LABORATORIUM PENELITIAN DAN PENGUJIAN TERPADU
KOMISI ETHICAL CLEARANCE UNTUK PENELITIAN PRAKLINIK

KETERANGAN KELAIKAN ETIK

(*Ethical Clearance*)

Nomor: 084-b/KEC-LPPT/XII/2012

Komisi *Ethical Clearance* untuk penelitian praklinik Laboratorium Penelitian dan Pengujian Terpadu, Universitas Gadjah Mada, Yogyakarta, setelah mempelajari dengan seksama rancangan penelitian yang diusulkan, dengan ini menyatakan bahwa penelitian:

Judul penelitian : Pengaruh Vitamin E Terhadap Parameter Kerusakan Hati pada Tikus yang Diberi Parasetamol

Peneliti Utama : Dr. dr. Andrew Johan., M.Si.

Asal Instansi : Program Pasca Sarjana Universitas Diponegoro

Lokasi Penelitian : Unit Praklinik LPPT UGM

Telah dinyatakan memenuhi persyaratan etik untuk dilaksanakan penelitian tersebut pada hewan uji tikus. Komisi *Ethical Clearance* mempunyai hak untuk melakukan pemantauan selama penelitian berlangsung.

Yogyakarta, 28 Desember 2012
Komisi *Ethical Clearance*
Ketua,

Prof. Dr. drh. Siti Isrina Oktavia Salasia



Lampiran 2. Tabel hasil pengukuran ALP

Kelompok	Pretest		Posttest		Δ test	
K	374.95	U/l	591.4	U/l	216.45	U/l
	448.84	U/l	516.7	U/l	67.86	U/l
	426.23	U/l	404.7	U/l	-21.53	U/l
	435.88	U/l	973.2	U/l	537.32	U/l
	380.47	U/l	687.3	U/l	306.83	U/l
	670.23	U/l	-	U/l	-	U/l
P1	690.9	U/l	835.1	U/l	144.2	U/l
	508.11	U/l	544.5	U/l	36.39	U/l
	527.97	U/l	406.7	U/l	-121.27	U/l
	320.36	U/l	497.9	U/l	177.54	U/l
	436.98	U/l	574.6	U/l	137.62	U/l
	556.91	U/l	274.6	U/l	-282.31	U/l
P2	414.65	U/l	274.3	U/l	-140.35	U/l
	328.08	U/l	797.3	U/l	469.22	U/l
	470.9	U/l	448.8	U/l	-22.1	U/l
	416.58	U/l	464.8	U/l	48.22	U/l
	562.7	U/l	443.6	U/l	-119.1	U/l
	508.94	U/l	373.9	U/l	-135.04	U/l
P3	487.71	U/l	303	U/l	-184.71	U/l
	505.91	U/l	863.5	U/l	357.59	U/l
	731.43	U/l	352.9	U/l	-378.53	U/l
	733.64	U/l	682.4	U/l	-51.24	U/l
	441.95	U/l	304.7	U/l	-137.25	U/l
	546.71	U/l	619	U/l	72.29	U/l
P4	385.43	U/l	499	U/l	113.57	U/l
	555.54	U/l	868.5	U/l	312.96	U/l
	414.93	U/l	480.6	U/l	65.67	U/l
	411.34	U/l	804.5	U/l	393.16	U/l
	523.28	U/l	647.9	U/l	124.62	U/l
	522.73	U/l	-	U/l	-	U/l

Lampiran 3. Analisis deskriptif ALP pretest

Descriptives

	KelompokPre		Statistic	Std. Error
ALP_Pre	PreKontrol	Mean	456.1000	44.53862
		95% Confidence Interval for Mean		
		Lower Bound	341.6098	
		Upper Bound	570.5902	
		5% Trimmed Mean	448.7122	
		Median	431.0550	
		Variance	11902.130	
		Std. Deviation	109.09688	
		Minimum	374.95	
		Maximum	670.23	
		Range	295.28	
		Interquartile Range	125.10	
		Skewness	2.037	.845
		Kurtosis	4.519	1.741
		PreP1	Mean	506.8717
	95% Confidence Interval for Mean			
	Lower Bound		377.0735	
	Upper Bound		636.6698	
	5% Trimmed Mean		507.0096	
	Median		518.0400	
	Variance		15297.676	
	Std. Deviation		123.68378	
	Minimum		320.36	
	Maximum		690.90	
	PreP2	Range	370.54	
Interquartile Range		182.58		
Skewness		-.073	.845	
Kurtosis		.891	1.741	
Mean		450.3083	33.58693	
95% Confidence Interval for Mean				
Lower Bound		363.9704		
Upper Bound	536.6463			
	5% Trimmed Mean	450.8548		
	Median	443.7400		
	Variance	6768.492		

		Std. Deviation	82.27084	
		Minimum	328.08	
		Maximum	562.70	
		Range	234.62	
		Interquartile Range	129.37	
		Skewness	-.151	.845
		Kurtosis	-.174	1.741
		Mean	574.5583	51.81101
		95% Confidence Interval for Lower Bound	441.3739	
		Mean Upper Bound	707.7428	
		5% Trimmed Mean	573.0876	
		Median	526.3100	
		Variance	16106.285	
	PreP3	Std. Deviation	126.91054	
		Minimum	441.95	
		Maximum	733.64	
		Range	291.69	
		Interquartile Range	255.71	
		Skewness	.668	.845
		Kurtosis	-1.838	1.741
		Mean	468.8750	29.75147
		95% Confidence Interval for Lower Bound	392.3964	
		Mean Upper Bound	545.3536	
		5% Trimmed Mean	468.6961	
		Median	468.8300	
		Variance	5310.899	
	PreP4	Std. Deviation	72.87591	
		Minimum	385.43	
		Maximum	555.54	
		Range	170.11	
		Interquartile Range	126.48	
		Skewness	.031	.845
		Kurtosis	-2.738	1.741

Lampiran 4. Tes normalitas ALP *pretest*

Tests of Normality							
	KelompokPre	Kolmogorov-Smirnov ^a			Shapiro-Wilk		
		Statistic	df	Sig.	Statistic	df	Sig.
ALP_Pre	PreKontrol	.360	6	.015	.740	6	.016
	PreP1	.176	6	.200 [*]	.979	6	.947
	PreP2	.166	6	.200 [*]	.980	6	.952
	PreP3	.254	6	.200 [*]	.837	6	.122
	PreP4	.270	6	.194	.851	6	.160

*. This is a lower bound of the true significance.

a. Lilliefors Significance Correction

Lampiran 5. Tes normalitas ALP *pretest* setelah transformasi

Tests of Normality							
	KelompokPre	Kolmogorov-Smirnov ^a			Shapiro-Wilk		
		Statistic	df	Sig.	Statistic	df	Sig.
Trn_Pre	PreKontrol	.325	6	.046	.795	6	.053
	PreP1	.211	6	.200 [*]	.956	6	.787
	PreP2	.193	6	.200 [*]	.966	6	.863
	PreP3	.222	6	.200 [*]	.866	6	.212
	PreP4	.276	6	.170	.852	6	.162

*. This is a lower bound of the true significance.

a. Lilliefors Significance Correction

Lampiran 6. Tes *One Way Anova* ALP *pretest*

ANOVA

Trn_Pre					
	Sum of Squares	df	Mean Square	F	Sig.
Between Groups	.044	4	.011	1.335	.284
Within Groups	.206	25	.008		
Total	.249	29			

Lampiran 7. Analisis deskriptif ALP *posttest*

Descriptives					
	KelompokPost		Statistic	Std. Error	
ALP_Post	PostKontrol	Mean	634.6600	96.44892	
		95% Confidence Interval for Mean	Lower Bound	366.8749	
			Upper Bound	902.4451	
		5% Trimmed Mean		628.6278	
		Median		591.4000	
		Variance		46511.973	
		Std. Deviation		215.66635	
		Minimum		404.70	
		Maximum		973.20	
		Range		568.50	
		Interquartile Range		369.55	
		Skewness		1.041	.913
		Kurtosis		1.324	2.000
		Mean		522.2333	76.67810
		95% Confidence Interval for Mean	Lower Bound	325.1260	
		Upper Bound	719.3407		
	5% Trimmed Mean		518.6093		
	Median		521.2000		
	Variance		35277.191		
	PostP1	Std. Deviation		187.82223	
		Minimum		274.60	
		Maximum		835.10	
		Range		560.50	
		Interquartile Range		266.05	
		Skewness		.636	.845
		Kurtosis		1.359	1.741
		Mean		467.1167	72.06075
95% Confidence Interval for Mean		Lower Bound	281.8786		
		Upper Bound	652.3547		
5% Trimmed Mean			459.4852		
PostP2		Median		446.2000	
	Variance		31156.510		

		Std. Deviation	176.51207	
		Minimum	274.30	
		Maximum	797.30	
		Range	523.00	
		Interquartile Range	198.92	
		Skewness	1.527	.845
		Kurtosis	3.372	1.741
		Mean	520.9167	95.83449
		95% Confidence Interval for Lower Bound	274.5663	
		Mean Upper Bound	767.2671	
		5% Trimmed Mean	513.9907	
		Median	485.9500	
		Variance	55105.494	
	PostP3	Std. Deviation	234.74559	
		Minimum	303.00	
		Maximum	863.50	
		Range	560.50	
		Interquartile Range	423.40	
		Skewness	.468	.845
		Kurtosis	-1.689	1.741
		Mean	660.1000	78.29566
		95% Confidence Interval for Lower Bound	442.7164	
		Mean Upper Bound	877.4836	
		5% Trimmed Mean	658.4944	
		Median	647.9000	
		Variance	30651.055	
	PostP4	Std. Deviation	175.07443	
		Minimum	480.60	
		Maximum	868.50	
		Range	387.90	
		Interquartile Range	346.70	
		Skewness	.163	.913
		Kurtosis	-2.634	2.000

Lampiran 8. Tes normalitas ALP *posttest*

Tests of Normality							
	KelompokPost	Kolmogorov-Smirnov ^a			Shapiro-Wilk		
		Statistic	df	Sig.	Statistic	df	Sig.
ALP_Post	PostKontrol	.204	5	.200 [*]	.944	5	.692
	PostP1	.224	6	.200 [*]	.961	6	.824
	PostP2	.339	6	.030	.842	6	.136
	PostP3	.263	6	.200 [*]	.871	6	.230
	PostP4	.221	5	.200 [*]	.897	5	.391

*. This is a lower bound of the true significance.

a. Lilliefors Significance Correction

Lampiran 9. Tes One Way Anova ALP *posttest*

ANOVA

ALP_Post					
	Sum of Squares	df	Mean Square	F	Sig.
Between Groups	146710.722	4	36677.681	.921	.469
Within Groups	916348.082	23	39841.221		
Total	1063058.804	27			

Lampiran 10. Analisis deskriptif selisih ALP *posttest* dengan *pretest*

Descriptives			
	KelompokDelta	Statistic	Std. Error
	Mean	221.3860	97.39552
	95% Confidence Interval for Mean	Lower Bound -49.0273	
		Upper Bound 491.7993	
	5% Trimmed Mean	217.3294	
	Median	216.4500	
	Variance	47429.437	
K	Std. Deviation	217.78301	
	Minimum	-21.53	
	Maximum	537.32	
	Range	558.85	
	Interquartile Range	398.91	
	Skewness	.573	.913
	Kurtosis	-.191	2.000
	Mean	15.3617	74.28931
	95% Confidence Interval for Mean	Lower Bound -175.6051	
		Upper Bound 206.3284	
DeltaALP	5% Trimmed Mean	22.8891	
	Median	87.0050	
	Variance	33113.410	
P1	Std. Deviation	181.97091	
	Minimum	-282.31	
	Maximum	177.54	
	Range	459.85	
	Interquartile Range	314.06	
	Skewness	-1.030	.845
	Kurtosis	-.255	1.741
	Mean	16.8083	95.46458
	95% Confidence Interval for Mean	Lower Bound -228.5912	
		Upper Bound 262.2079	
P2	5% Trimmed Mean	.4054	
	Median	-70.6000	
	Variance	54680.920	

	Std. Deviation		233.83952	
	Minimum		-140.35	
	Maximum		469.22	
	Range		609.57	
	Interquartile Range		289.84	
	Skewness		1.940	.845
	Kurtosis		3.905	1.741
	Mean		-53.6417	102.42033
	95% Confidence Interval for Mean	Lower Bound	-316.9215	
		Upper Bound	209.6382	
	5% Trimmed Mean		-58.4385	
	Median		-94.2450	
	Variance		62939.545	
P3	Std. Deviation		250.87755	
	Minimum		-378.53	
	Maximum		357.59	
	Range		736.12	
	Interquartile Range		376.78	
	Skewness		.654	.845
	Kurtosis		.878	1.741
	Mean		201.9960	63.73683
	95% Confidence Interval for Mean	Lower Bound	25.0342	
		Upper Bound	378.9578	
	5% Trimmed Mean		198.9494	
	Median		124.6200	
	Variance		20311.916	
P4	Std. Deviation		142.51988	
	Minimum		65.67	
	Maximum		393.16	
	Range		327.49	
	Interquartile Range		263.44	
	Skewness		.671	.913
	Kurtosis		-2.154	2.000

Lampiran 11. Tes normalitas selisih ALP *posttest* dengan *pretest*

Tests of Normality							
	KelompokDelta	Kolmogorov-Smirnov ^a			Shapiro-Wilk		
		Statistic	df	Sig.	Statistic	df	Sig.
DeltaALP	K	.160	5	.200 [*]	.971	5	.879
	P1	.249	6	.200 [*]	.868	6	.219
	P2	.280	6	.155	.747	6	.019
	P3	.163	6	.200 [*]	.972	6	.905
	P4	.306	5	.141	.869	5	.264

*. This is a lower bound of the true significance.

a. Lilliefors Significance Correction

Lampiran 12. Tes Kruskal Wallis

Ranks			
	KelompokDelta	N	Mean Rank
DeltaALP	K	5	19.80
	P1	6	13.50
	P2	6	11.33
	P3	6	9.83
	P4	5	19.80
	Total	28	

Test Statistics ^{a,b}	
	DeltaALP
Chi-Square	7.060
df	4
Asymp. Sig.	.133

a. Kruskal Wallis Test

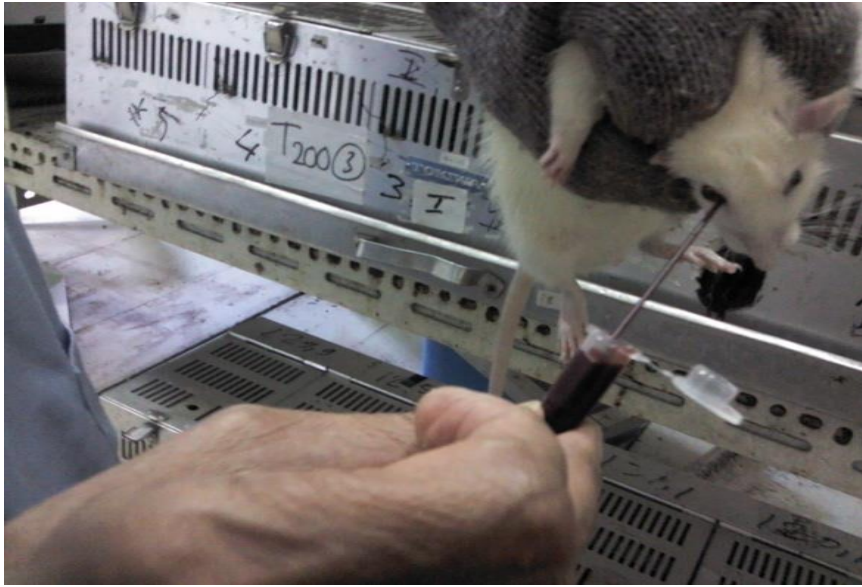
b. Grouping Variable:

KelompokDelta

Lampiran 13. Dokumentasi penelitian



Keterangan gambar.
Pemberian Vitamin-E dan parasetamol melalui sonde



Keterangan gambar.
Pengambilan sampel darah tikus

Lampiran 14. Biodata Mahasiswa

IDENTITAS

Nama : Michael Berlianto Dhanurwido
NIM : G2A009046
Tempat, tanggal lahir : Semarang, 6 Januari 1991
Jenis kelamin : Laki-laki
Alamat : Jl. Banteng Raya no.8, Semarang
Nomor telephone : 081326287236
e-mail : michaelberlianto@gmail.com

Riwayat Pendidikan Formal

1. SD : SD Kanisius Pati Lulus Tahun : 2003
2. SMP : SMP Keluarga Pati Lulus Tahun : 2006
3. SMA : SMA Negeri 2 Pati Lulus Tahun : 2009
4. FK UNDIP : Masuk tahun : 2009