

## DAFTAR PUSTAKA

- [1] Baily, D., Wright, E., 2003, "*Practical SCADA for Industry*," IDC Technologies, Australia.
- [2] <http://id.wikipedia.org/wiki/SCADA.html>, diakses tanggal 10 November 2012 pukul 22.00 WIB.
- [3] Gordon, C., Baily, D., Wright, E., 2003, "*Practical SCADA Modern Protocol*," IDC Technologies, Australia.
- [4] "*Vijeo Citect Training Manual*," Schneider Electric, Australia, 2009.
- [5] Huck, J., 2007, "*Automation Manufacturing Systems with PLCs*," GNU.
- [6] Amirin, 2004, *Pengantar Mekatronika Dan Penerapannya*.
- [7] "*Operation Manual CP1L CPU Unit*," Omron, Japan, 2007.
- [8] "*CX-Programmer User Manual Guide*," Omron, Japan, 2010.
- [9] <http://elyablogmesh.blogspot.com/2011/03/bahasa-program-dalam-plc.html>, diakses tanggal 12 November 2012 pukul 22.00 WIB.
- [10] <http://plcindonesia.blogspot.com/2011/08/symbol-ladder-plc.html>, diakses tanggal 12 November 2012 pukul 22.00 WIB.
- [11] <http://www.scribd.com/doc/7483203/22/komunikasi-data-serial.html>, diakses tanggal 12 November 2012 pukul 23.00 WIB.
- [12] Prasetia, Widodo, 2004, "*Teori dan Praktek Interfacing Port Parallel dan Port Serial Komputer dengan Visual Basic 6.0*," Penerbit Andi, Yogyakarta.
- [13] John, P., Mackay, S., 2003, "*Practical Data Acquisition for Instrumentation and Control Systems*," IDC Technologies, Australia.
- [14] "*Quickstart Tutorial Vijeo Citect v7.0*," Schneider Electric, Australia, 2009.
- [15] Budi, S., Suyatmo, 2010, "*Rancang Bangun Simulator Kendali Lift Parkir Mobil Bertingkat Berbasis Programmable Logic Controller (PLC)*," Sekolah Tinggi Teknologi Nuklir Yogyakarta.
- [16] Murthui, R., 2007, "*Intelephant Car Parking System*," University Technical Malaysia Melaka.
- [17] Thiang, Sugiarta, E., 2008, "*Kontrol Parkir Mobil Otomatis Dengan Menggunakan Programmable Logic Controller*," Universitas Kristen Petra

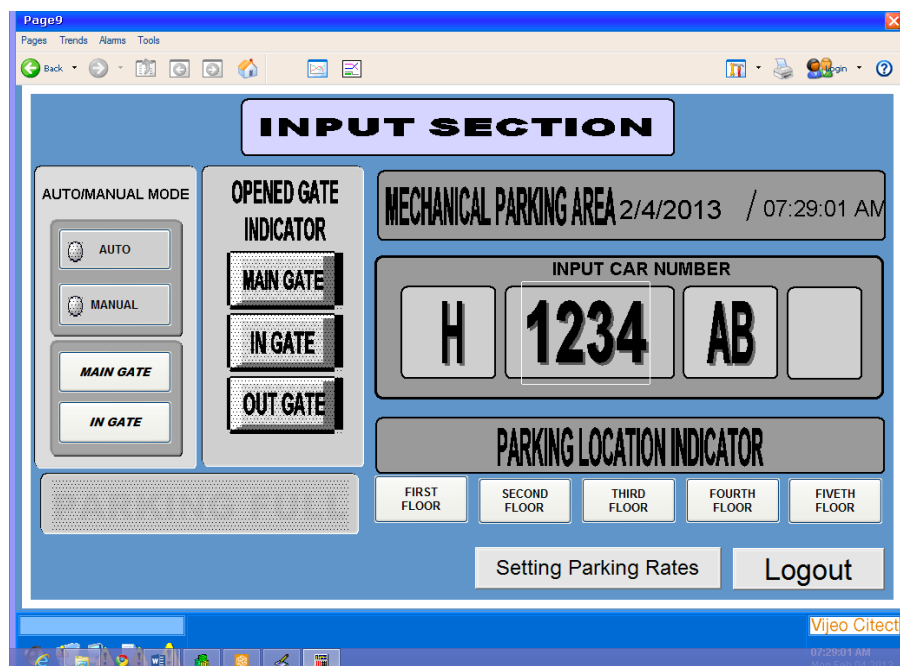
Surabaya.

- [18] Jose, L., Goncalves, J., Costa, G., Moreira, A., “*PLC and Petri Net Training Based on a 3D Virtual Car Parking Modeling and Control,*” University of Porto Portugal.

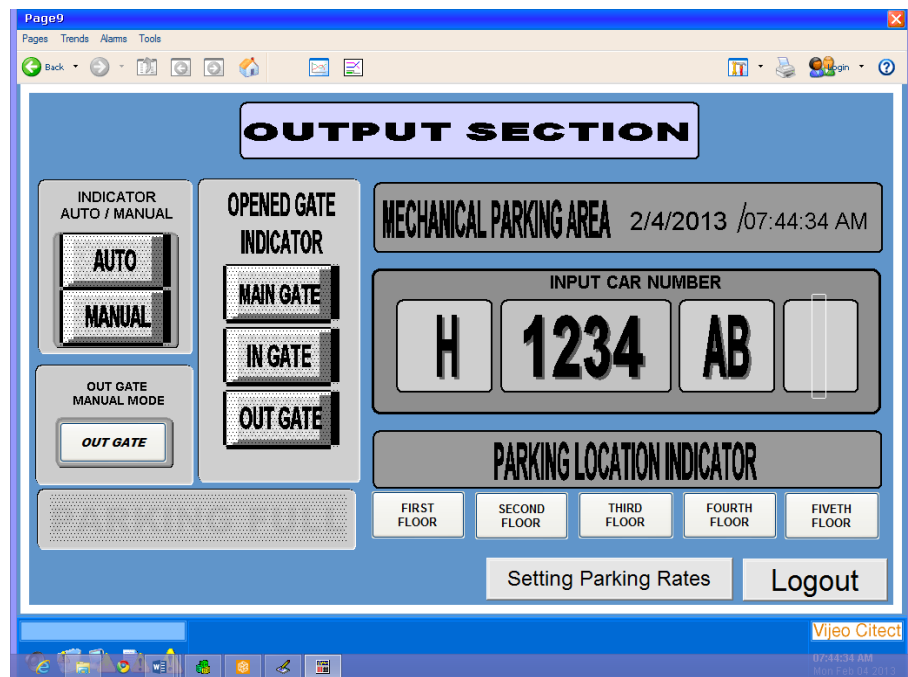
Lampiran 1 Desain *Graphics* Perangkat Lunak Sistem SCADA



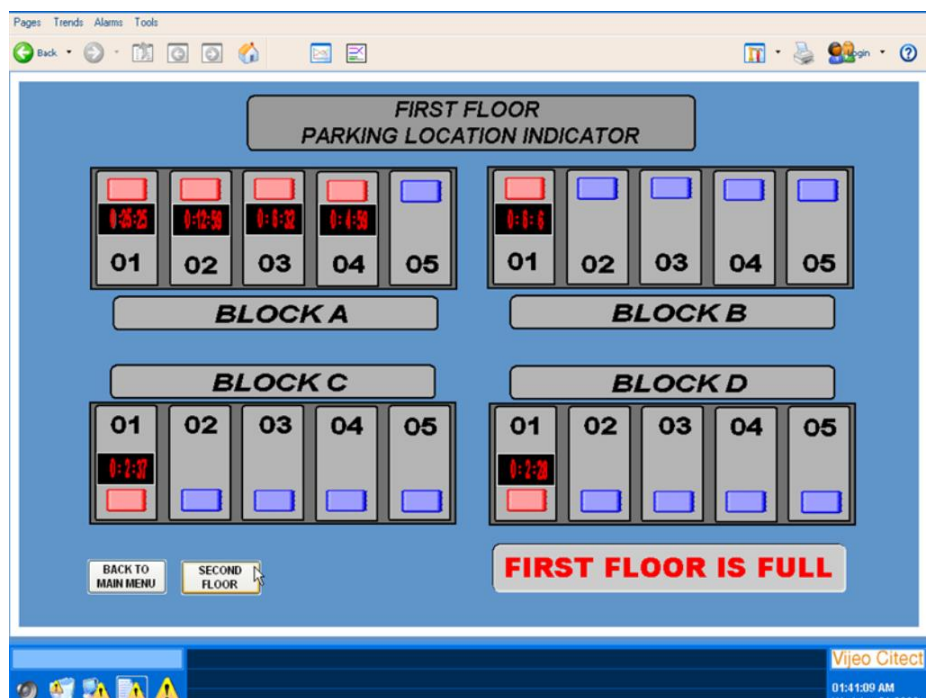
Halaman pertama “*user registration*”



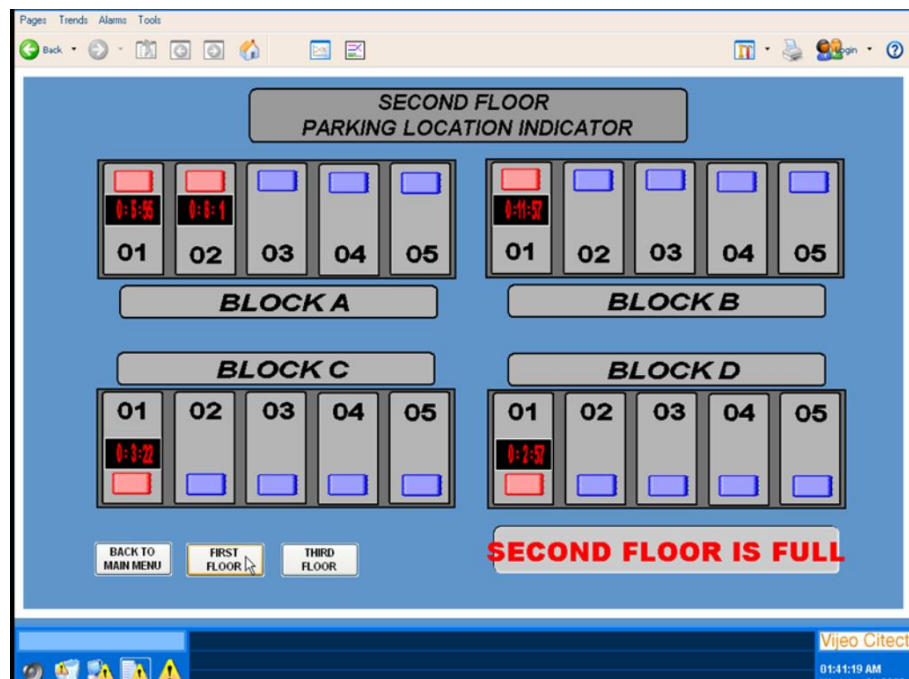
Halaman kedua “*human machine interface-input section*”



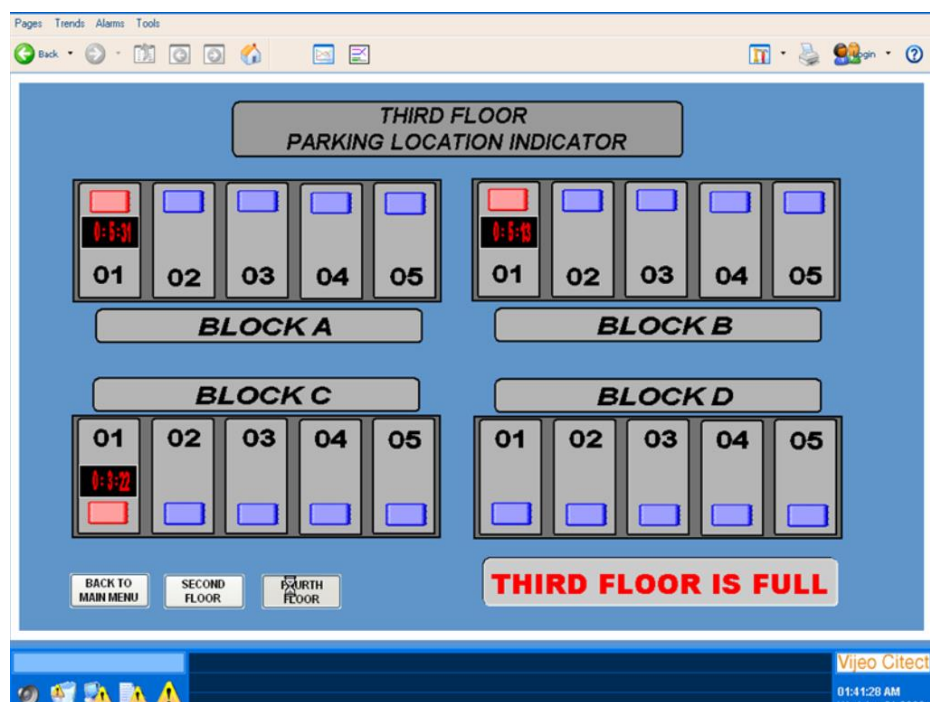
Halaman kedua “*human machine interface-output section*”



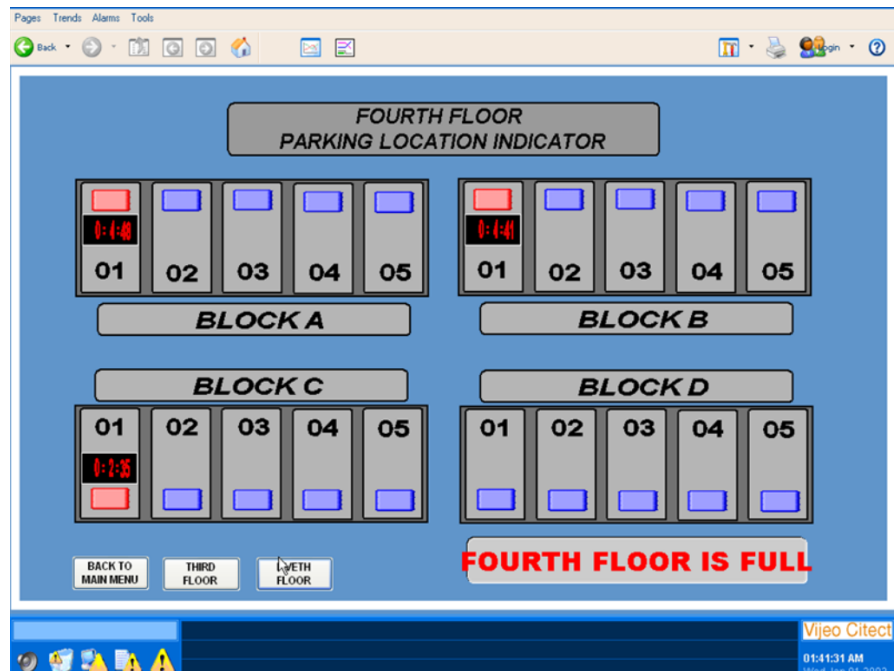
Halaman ketiga “*first floor parking location indicator*”



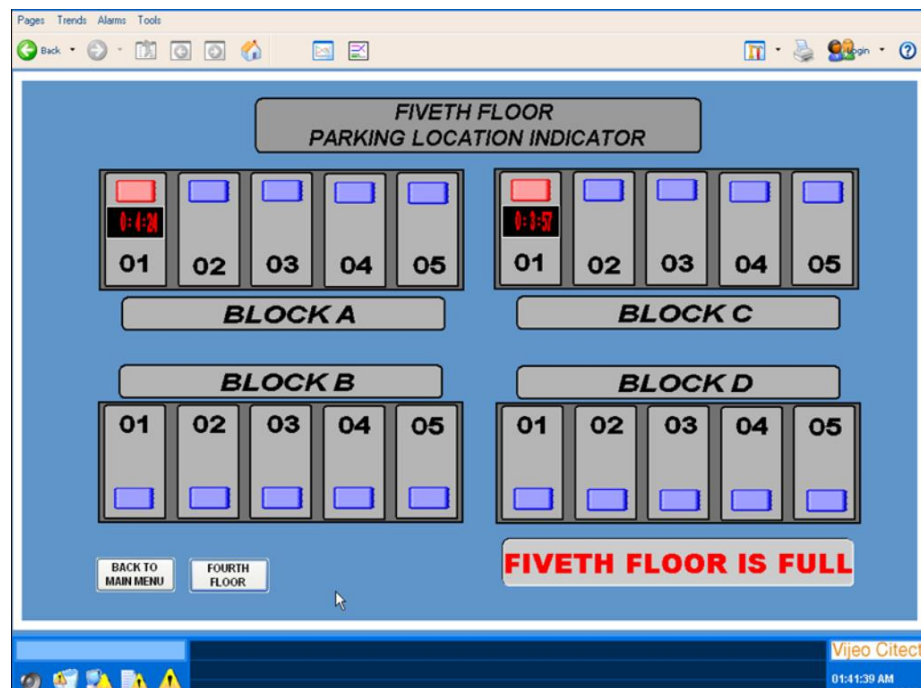
Halaman keempat “*second floor parking location indicator*”



Halaman kelima “*third floor parking location indicator*”



Halaman keenam “*fourth floor parking location indicator*”



Halaman ketujuh “*fiveth floor parking location indicator*”



Halaman kedelapan “*setting for parking rates*”



a



b

- a. Halaman kesembilan “*layout tiket parkir masuk*”
- b. Halaman kesembilan “*layout tiket parkir masuk*”

## Lampiran 2 Pengalamatan Memori PLC

Name	Data Type	Address / ...	Rack Lo...	Usage	Comment
CHANN...	0			Mi...	0
BOOL	0.00			In	sensor gate 1
BOOL	0.01			In	sensor gate 2
BOOL	0.02			In	sensor gate 3
BOOL	0.03			In	sensor gate 4
BOOL	0.04			In	sensor pos 2b01
BOOL	0.05			In	sensor pos 2a02
BOOL	0.06			In	sensor pos 2a01
BOOL	0.07			In	sensor pos 1c01
BOOL	0.08			In	sensor pos 5b01
BOOL	0.09			In	sensor pos 1d01
BOOL	0.10			In	sensor pos 5a01
BOOL	0.11			In	sensor pos 3b01
BOOL	0.12			Work	sensor pos 2b01
BOOL	0.13			Work	sensor pos 2c01
BOOL	0.14			Work	sensor pos 2d01
BOOL	1.00			In	sensor pos 4b01
BOOL	1.01			In	sensor pos 3a01
BOOL	1.02			In	sensor pos 4a01
BOOL	1.03			In	sensor pos 2c01
BOOL	1.04			In	sensor pos 4c01
BOOL	1.05			In	sensor pos 2d01
BOOL	1.06			In	sensor pos 3c01
BOOL	1.07			In	LM pos 1a01
BOOL	1.08			In	sensor pos 1a02
BOOL	1.09			In	sensor pos 1a03
BOOL	1.10			In	sensor pos 1a04
BOOL	1.11			In	sensor posisi 1b01
BOOL	2.00			In	tb gate1
BOOL	2.01			In	tb gate2
BOOL	2.02			In	tb gate3
BOOL	2.03			In	auto
BOOL	2.04			In	manual
BOOL	3.00			Work	sensor 1
BOOL	3.01			Work	sensor 2
BOOL	3.02			Work	sensor 3
BOOL	3.03			Work	sensor 4
BOOL	10.00			Work	SEN GATE 2
BOOL	30.00			Work	pos A1

Name	Data Type	Address / ... Rack Lo...	Usage Comment
	BOOL	30.01	Work pos A2
	BOOL	30.02	Work pos A3
	BOOL	30.03	Work pos A4
	BOOL	30.04	Work pos A5
	CHANN...	50	Work .
	BOOL	50.01	Work gate 1 buka
	BOOL	50.02	Work gate 2 buka
	BOOL	50.03	Work gate3 buka
	BOOL	100.00	Out gate1 data 1
	BOOL	100.01	Out gate1 data 2
	BOOL	100.02	Out gate1 data 3
	BOOL	100.03	Out gate1 data4
	BOOL	100.05	Out data 1
	BOOL	100.06	Out data2
	BOOL	100.07	Out data3
	BOOL	101.00	Out data4
	BOOL	101.01	Out data 1
	BOOL	101.02	Out data2
	BOOL	101.03	Out data3
	BOOL	101.04	Out data4
	BOOL	200.00	Work full total
	BOOL	200.01	Work FULL LANTAI 1
	BOOL	200.02	Work FULL LANTAI 2
	BOOL	200.03	Work FULL LANTAI 3
	BOOL	200.04	Work FULL LANTAI 4
	BOOL	200.05	Work FULL LANTAI 5
	BOOL	210.00	Work pos 1a01
	BOOL	210.01	Work Indicator LM pos 1A01
	BOOL	210.02	Work posisi 1a02
	BOOL	210.03	Work posisi 1a03
	BOOL	210.04	Work posisi 1a04
	BOOL	210.05	Work posisi 1b01
	BOOL	210.06	Work posisi 1c01
	BOOL	210.07	Work posisi 1d01
	BOOL	211.01	Work pos 2a01
	BOOL	211.02	Work pos 2a02
	BOOL	211.03	Work pos 2b01
	BOOL	211.04	Work pos 2c01
	BOOL	211.05	Work pos 2d01

Name	Data Type	Address / ...Rack Lo...	Usage Comment
	BOOL	211.11	Work pos 2a01 mem
	BOOL	211.12	Work pos 2a02 mem
	BOOL	211.13	Work pos 2b01 mem
	BOOL	211.14	Work pos 2c01 mem
	BOOL	211.15	Work pos 2d01 mem
	BOOL	212.01	Work pos 3a01
	BOOL	212.02	Work pos 3b01
	BOOL	212.03	Work pos 3c01
	BOOL	213.01	Work pos 4a01
	BOOL	213.02	Work pos 4b01
	BOOL	213.03	Work pos 4c01
	BOOL	213.11	Work pos 4a01 mem
	BOOL	213.12	Work pos 4b01 mem
	BOOL	213.13	Work pos 4c01 mem
	BOOL	214.01	Work pos 5a01
	BOOL	214.02	Work pos 5b01
	BOOL	220.00	Work SET READY GATE 1
	BOOL	220.01	Work Parking Location Info...
	BOOL	220.02	Work pos 1a02 mem
	BOOL	220.03	Work pos 1a03 mem
	BOOL	220.04	Work pos 1a04 mem
	BOOL	220.05	Work pos 1b01 mem
	BOOL	220.06	Work pos 1c01 mem
	BOOL	220.07	Work pos 1d01 mem
	BOOL	221.01	Work pos 3a01
	BOOL	222.01	Work pos 3a01 mem
	BOOL	222.02	Work pos 3b01 mem
	BOOL	222.03	Work pos 3c01 mem
	BOOL	224.01	Work pos 5a01 memory
	BOOL	224.02	Work pos 5b01 memory
	BOOL	230.00	Work fwd
	BOOL	230.01	Work rev
	BOOL	231.00	Work fwd 2
	BOOL	231.01	Work rev 2
	BOOL	232.00	Work fwd 3
	BOOL	232.01	Work rev3
	BOOL	250.00	Work reset tim 1a01
	BOOL	250.01	Work reset timer 1a02
	BOOL	250.02	Work reset timer 1a03

Name	Data Type	Address / ...Rack Lo...	Usage Comment
	BOOL	250.03	Work reset timer 1a04
	BOOL	250.04	Work reset timer 1b01
	BOOL	250.05	Work reset timer 1c01
	BOOL	250.06	Work reset timer 1d01
	BOOL	252.00	Work reset tim 2a01
	BOOL	252.01	Work reset timer 2a02
	BOOL	252.02	Work reset timer 2b01
	BOOL	252.03	Work reset timer 2c01
	BOOL	252.04	Work reset time 2d01
	BOOL	253.00	Work reset time 3a01
	BOOL	253.01	Work reset posisi 3b01
	BOOL	253.02	Work reset posisi 3c01
	BOOL	254.00	Work reset time 4a01
	BOOL	254.01	Work reset timer 4b01
	BOOL	254.02	Work reset timer 4c01
	BOOL	255.00	Work reset timer 5a01
	BOOL	255.01	Work reset timer 5b01
	BOOL	260.00	Work gata2 on in string
	BOOL	260.01	Work on pos A2
	BOOL	260.02	Work on pos A3
	BOOL	260.03	Work on pos A4
	BOOL	260.04	Work on pos A5
	BOOL	270.00	Work GATE 2 ON AUTO
	BOOL	270.01	Work GATE 3 ON AUTO
	BOOL	280.00	Work OUT POS 1a01
	BOOL	280.01	Work OUT POS 1a02
	BOOL	280.02	Work OUT POS 1a03
	BOOL	280.03	Work OUT POS 1a04
	BOOL	280.04	Work OUT POS 1b01
	BOOL	280.05	Work OUT POS 1c01
	BOOL	280.06	Work OUT POS 1d01
	BOOL	280.10	Work reset timer pos 2a01
	BOOL	280.11	Work posisi 1a01 print
	BOOL	280.12	Work posisi 1a02 print
	BOOL	280.13	Work posisi 1a03 print
	BOOL	280.14	Work posisi 1a04 print
	BOOL	280.15	Work posisi 1b01 print
	BOOL	281.00	Work difo pos 1a01
	BOOL	281.01	Work difo pos1a02

Name	Data Type	Address / ... Rack Lo...	Usage Comment
	BOOL	281.02	Work difu pos 1a03
	BOOL	281.03	Work difu pos 1a04
	BOOL	281.04	Work difu pos 1b01
	BOOL	281.05	Work difu pos 1c01
	BOOL	281.06	Work difu pos 1d01
	BOOL	282.00	Work difu pos 2a01
	BOOL	282.01	Work difu pos 2a02
	BOOL	282.02	Work difu pos 2b01
	BOOL	282.03	Work difu pos 2c01
	BOOL	282.04	Work difu pos 2d01
	BOOL	282.10	Work out pos 2a01
	BOOL	282.11	Work out pos 2a02
	BOOL	282.12	Work out pos 2b01
	BOOL	282.13	Work out pos 2c01
	BOOL	282.14	Work out pos 2d01
	BOOL	283.00	Work difu pos 3a01
	BOOL	283.01	Work difu pos 3b01
	BOOL	283.02	Work difu pos 2c01
	BOOL	283.10	Work out pos 3a01
	BOOL	283.11	Work out pos 3b01
	BOOL	283.12	Work out pos 3c01
	BOOL	283.14	Work out pos 3c01
	BOOL	284.00	Work difu pos 4a01
	BOOL	284.01	Work difu pos 4b01
	BOOL	284.02	Work difu pos 4c01
	BOOL	284.10	Work out pos 4a01
	BOOL	284.11	Work out pos 4b01
	BOOL	284.12	Work out pos 4c01
	BOOL	285.00	Work difu pos 5a01
	BOOL	285.01	Work difu pos 5b01
	BOOL	285.10	Work out pos 5a01
	BOOL	285.11	Work out pos 5b01
	BOOL	290.00	Work posisi 1c01 print
	BOOL	290.01	Work posisi 1d01 print
	BOOL	290.02	Work sensor gate 2
	BOOL	300.00	Work pos 1a01 READY
	BOOL	300.01	Work pos 1a02 READY
	BOOL	300.02	Work pos 1a03 READY
	BOOL	300.03	Work pos 1d04 READY

Name	Data Type	Address / ...Rack Lo...	Usage Comment
	BOOL	300.04	Work pos ready 1b01
	BOOL	300.05	Work pos 1c01 ready
	BOOL	300.06	Work pos 1d01 ready
	BOOL	310.00	Work pos 2a01
	BOOL	310.01	Work ready pos 2a02
	BOOL	310.02	Work ready pos 2b01
	BOOL	310.03	Work ready pos 2c01
	BOOL	310.04	Work ready pos 2d01
	BOOL	320.00	Work pos 3a01
	BOOL	320.01	Work ready pos 3b01
	BOOL	320.02	Work ready pos 3c01
	BOOL	330.00	Work ready pos 4a01
	BOOL	330.01	Work ready pos 4b01
	BOOL	330.02	Work ready pos 4c01
	BOOL	340.00	Work ready pos 5a01
	BOOL	340.01	Work ready pos 5b01
	BOOL	380.11	Work posisi 2a01 print
	BOOL	380.12	Work posisi 2a02 print
	BOOL	380.13	Work posisi 2b01 print
	BOOL	380.14	Work posisi 2c01 print
	BOOL	380.15	Work posisi 2d01 print
	BOOL	400.00	Work on gate 2 lt1
	BOOL	400.01	Work on gate 2 lt2
	BOOL	400.02	Work on gate 2 lt3
	BOOL	400.03	Work on gate 2 lt4
	BOOL	400.04	Work on gate 2 lt5
	BOOL	410.00	Work on gate 3 lt1
	BOOL	410.01	Work on gate 3 lt2
	BOOL	410.02	Work on gate 3 lt3
	BOOL	410.03	Work on gate 3 lt4
	BOOL	410.04	Work on gate 3 lt5
	BOOL	480.00	Work posisi 4a01 print
	BOOL	480.01	Work posisi 4b01 print
	BOOL	480.02	Work posisi 4c01 print
	BOOL	480.03	Work posisi 5a01 print
	BOOL	480.04	Work posisi 5b01 print
	BOOL	480.11	Work posisi 3a01 print
	BOOL	480.12	Work posisi 3b01 print
	BOOL	480.13	Work posisi 3c01 print

Name	Data Type	Address / ...Rack Lo...	Usage Comment
	BOOL	500.00	Work on main gate
	BOOL	500.01	Work on in gate
	BOOL	500.02	Work on s3
	BOOL	510.00	Work on gate 1 tutup
	BOOL	510.01	Work on gate 2 tutup
	BOOL	510.02	Work on gate 3 tutup
	BOOL	580.11	Work posisi 4a01 print
	BOOL	580.12	Work posisi 4b01 print
	BOOL	580.13	Work posisi 4c01 print
	BOOL	600.01	Work biaya dibawah 12 jam
	BOOL	680.11	Work posisi 5a01 print
	BOOL	680.12	Work posisi 5b01 print
	BOOL	1000.00	Work buka gate 1 man
	BOOL	1000.01	Work tutup gate 1 man
	BOOL	1000.02	Work buka gate 2 manual
	BOOL	1000.03	Work tutup gate 2 man
	BOOL	1000.04	Work buka gate 3 manual
	BOOL	1000.05	Work tutup gate 3 man
	BOOL	2000.00	Work d0
	BOOL	2000.01	Work d1
	BOOL	2000.02	Work d2
	BOOL	2000.03	Work d3
	BOOL	2000.10	Work save data
	BOOL	C0004	Work ]
	CHANN...	D0	Work masukan plate nomor
	CHANN...	D1	Work data input keluar
	CHANN...	D5	Work ]
	CHANN...	D10	Work hour on parking ticket
	CHANN...	D11	Work minute on parking ticket
	CHANN...	D12	Work second on parking ticket
	CHANN...	D15	Work Parking rates
	CHANN...	D17	Work Base parking rates
	CHANN...	D19	Work Parking rates after 1 hour
	CHANN...	D100	Work simpan data lt1 pos 1a01
	CHANN...	D101	Work simpan data lt1 pos 1b02
	CHANN...	D102	Work simpan data lt1 pos 1c03
	CHANN...	D103	Work simpan data lt1 pos 1d04
	CHANN...	D110	Work save car number poss 1...
	CHANN...	D111	Work save plate nomer A2

Name	Data Type	Address / ... Rack Lo...	Usage Comment
CHANN...	D112		Work save plate nomer A3
CHANN...	D113		Work save plate nomer A4
CHANN...	D114		Work save plate nomer B1
CHANN...	D115		Work save plate nomer C1
CHANN...	D116		Work masikan plate nomor D1
CHANN...	D210		Work save plate b1
CHANN...	D1001		Work second poss a01
CHANN...	D1002		Work second posisi 1a02
CHANN...	D1003		Work second posisi 1a03
CHANN...	D1004		Work second posisi 1a04
CHANN...	D1005		Work second posisi 1b01
CHANN...	D1006		Work secon posisi 1c01
CHANN...	D1007		Work second posisi 1d01
CHANN...	D1201		Work minute poss1a01
CHANN...	D1202		Work menit posisi 1a02
CHANN...	D1203		Work menit posisi 1a03
CHANN...	D1204		Work menit posisi 1a04
CHANN...	D1205		Work menit posisi 1b01
CHANN...	D1206		Work menit posisi 1c01
CHANN...	D1207		Work menit posisi 1d01
CHANN...	D1211		Work timer data menit
CHANN...	D1301		Work hour poss1 a01
CHANN...	D1302		Work jam posisi 1a02
CHANN...	D1303		Work jam posisi 1a03
CHANN...	D1304		Work jam posisi 1a04
CHANN...	D1305		Work jam posisi 1b01
CHANN...	D1306		Work jam posisi 1c01
CHANN...	D1307		Work jam posisi 1d01
CHANN...	D1401		Work timer data jam
CHANN...	D2001		Work secon posisi 2a01
CHANN...	D2002		Work second posisi 2a02
CHANN...	D2003		Work second posisi 2b01
CHANN...	D2004		Work second posisi 2c01
CHANN...	D2005		Work second posisi 2d01
CHANN...	D2201		Work menit posisi 2a01
CHANN...	D2202		Work menit posisi 2a02
CHANN...	D2203		Work menit posisi 2b01
CHANN...	D2204		Work menit posisi 2c01
CHANN...	D2205		Work menit posisi 2d01

Name	Data Type	Address / ... Rack Lo...	Usage Comment
	CHANN...	D2301	Work jam posisi 2a01
	CHANN...	D2302	Work jam posisi 2a02
	CHANN...	D2303	Work jam posisi 2b01
	CHANN...	D2304	Work jam posisi 2c01
	CHANN...	D2305	Work jam posisi 2d01
	CHANN...	D3001	Work second posisi 3a01
	CHANN...	D3002	Work second posisi 3b01
	CHANN...	D3003	Work second posisi 3c01
	CHANN...	D3201	Work menit posisi 3a01
	CHANN...	D3202	Work menit posisi 3b01
	CHANN...	D3203	Work menit posisi 3c01
	CHANN...	D3301	Work jam posisi 3a01
	CHANN...	D3302	Work jam posisi 3b01
	CHANN...	D3303	Work jam posisi 3c01
	CHANN...	D4001	Work second posisi 4a01
	CHANN...	D4002	Work second posisi 4b01
	CHANN...	D4003	Work second posisi 4c01
	CHANN...	D4201	Work menit posisi 4a01
	CHANN...	D4202	Work menit posisi 4b01
	CHANN...	D4203	Work menit posisi 4c01
	CHANN...	D4301	Work jam posisi 4a01
	CHANN...	D4302	Work jam posisi 4b01
	CHANN...	D4303	Work jam posisi 4c01
	CHANN...	D5001	Work second posisi 5a01
	CHANN...	D5002	Work second posisi 5b01
	CHANN...	D5201	Work menit posisi 5a01
	CHANN...	D5202	Work menit posisi 5b01
	CHANN...	D5301	Work jam posisi 5a01
	CHANN...	D5302	Work jam posisi 5b01
	BOOL	T0000	Work timer gate 2
P_0_02s	BOOL	CF103	Work 0.02 second clock puls...
P_0_1s	BOOL	CF100	Work 0.1 second clock pulse ...
P_0_2s	BOOL	CF101	Work 0.2 second clock pulse ...
P_1min	BOOL	CF104	Work 1 minute clock pulse bit
P_1s	BOOL	CF102	Work 1.0 second clock pulse ...
P_AER	BOOL	CF011	Work Access Error Flag
P_CIO	WORD	A450	Work CIO Area Parameter
P_CY	BOOL	CF004	Work Carry (CY) Flag
P_Cycle_Time_...	BOOL	A401.08	Work Cycle Time Error Flag