

## LAMPIRAN

### TAMPILAN PROGRAM

	SOAL.dta				
NEW	302.2	125.7	100.4	105.0	116.8
OPEN	125.7	170.8	84.19	93.60	97.37
SAVE	100.4	84.19	111.6	110.8	118.9
HITUNG	105.0	93.60	110.8	217.8	152.2
OPTION	116.8	97.37	118.9	152.2	297.0
EXIT					

Page 1 of 1      Menu 4

Gambar Tampilan program matrik *covariance*

	SOAL.dta				
NEW	678.84	199.44	105.47	83.786	32.116
OPEN	0.5066	0.7449	0.2997	0.3041	0.0786
SAVE	0.3681	0.2103	-0.387	-0.796	0.1914
HITUNG	0.3445	-0.071	-0.160	-0.003	-0.922
OPTION	0.4499	-0.294	-0.612	0.4989	0.2951
EXIT	0.5356	-0.556	0.5998	-0.157	0.1395

0.617  
0.000

Page 1 of 1      Menu 4

Gambar Tampilan program *eigen vektor, eigen value dan theta*

		SOAL.dta				
NEW		282.3	109.7	61.87	61.19	78.26
OPEN		109.7	168.7	66.46	75.69	76.02
SAVE		61.87	66.46	84.67	92.88	87.61
HITUNG		61.19	75.69	92.88	229.7	103.6
OPTION		78.26	76.02	87.61	103.6	229.1
EXIT						
HASIL REPLIKASI						
SE						
		Page 1 of 0				Menu 4

Gambar Tampilan program replikasi matrik *covariance*

		SOAL.dta				
NEW		535.64	215.20	125.37	91.741	26.658
OPEN		0.5204	0.7551	0.0344	0.3962	0.0308
SAVE		0.4115	0.1594	0.1390	-0.869	0.1719
HITUNG		0.3229	-0.156	0.0304	-0.055	-0.931
OPTION		0.4686	-0.507	0.6189	0.2775	0.2517
EXIT		0.4858	-0.350	-0.771	0.0813	0.1975
HASIL REPLIKASI						
SE		0.539				
		0.046				
		Page 1 of 1				Menu 4

Gambar Tampilan program replikasi *eigen vektor, eigen value dan theta*

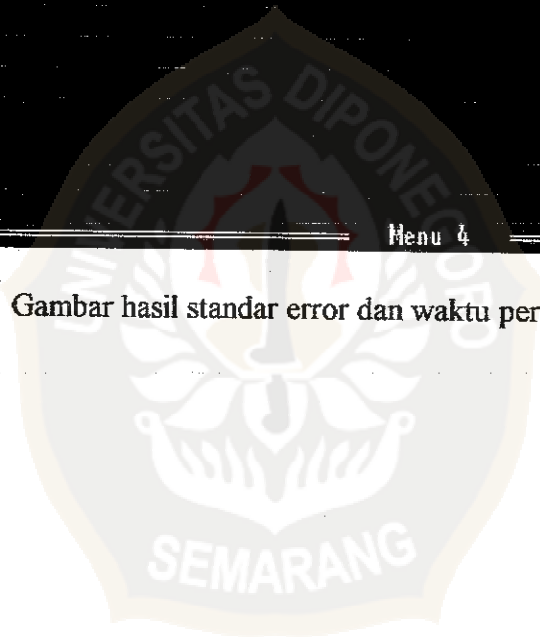
```
SOAL.dta
- Standar Error
Alpha: 0.049
Alpha: 0.047
Alpha: 0.047
Waktu awal replikasi 18:58:45
Waktu akhir replikasi 18:59:04

NEW
OPEN
SAVE
HITUNG
OPTION
EXIT

HASIL
REPLI
SE

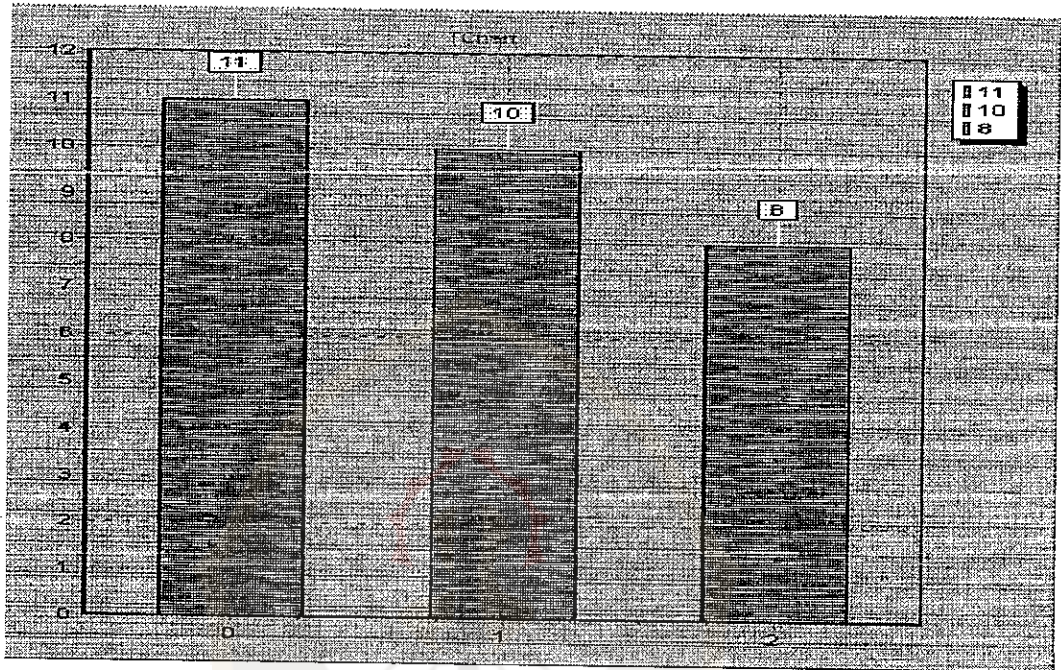
Menu 4
```

Gambar hasil standar error dan waktu pereplikasian

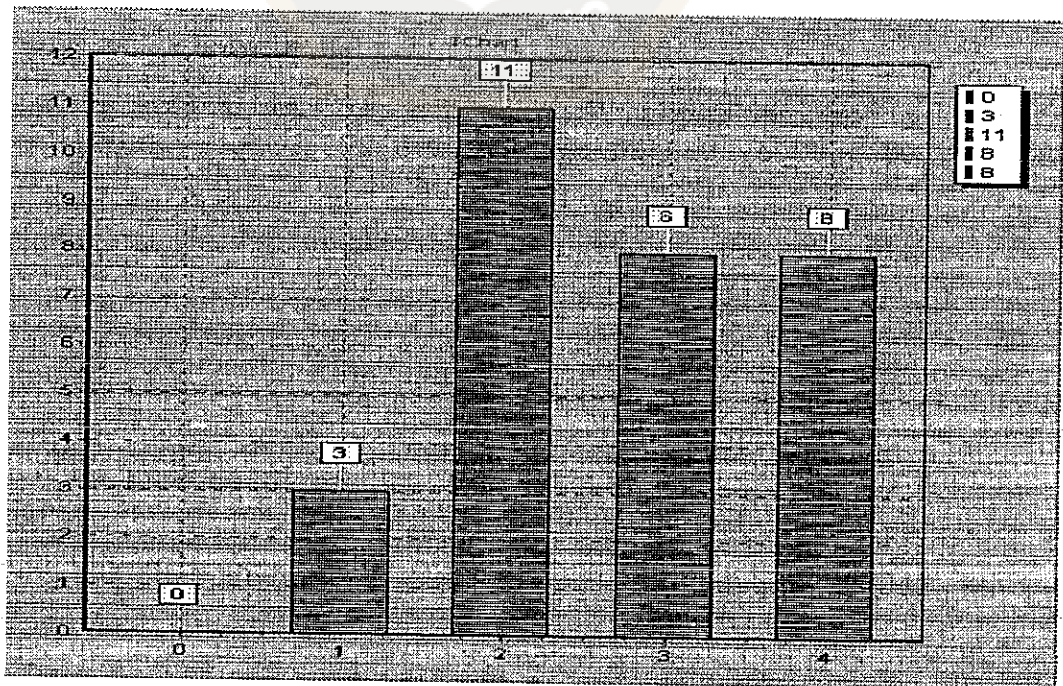


**HISTOGRAM**

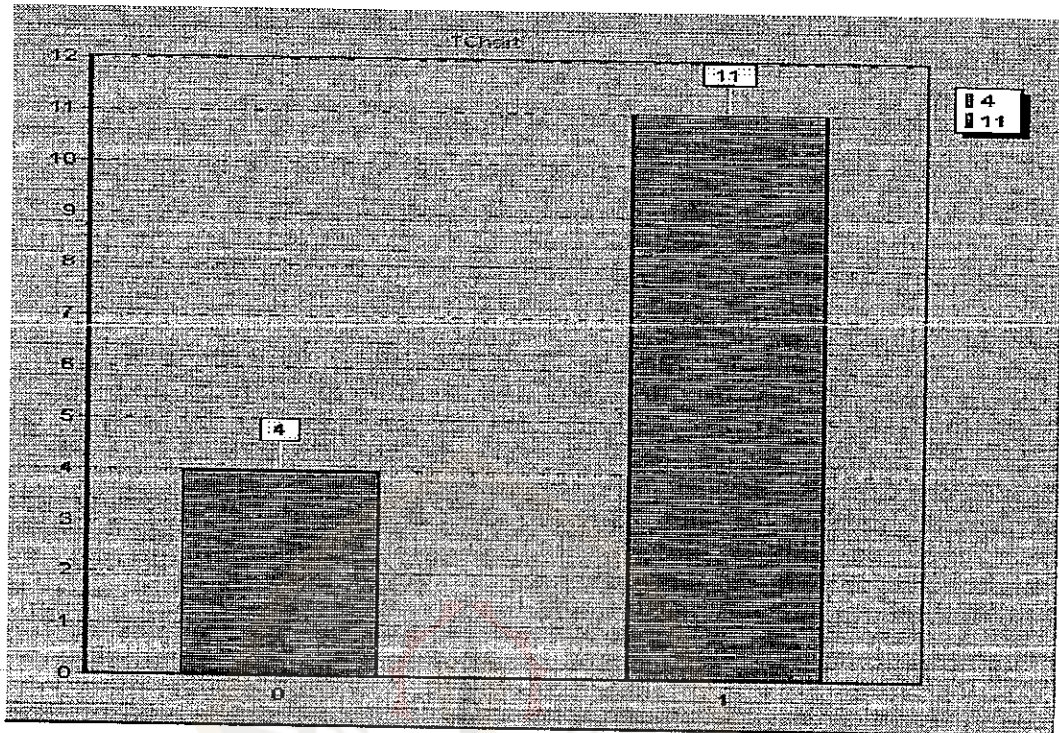
**Replikasi 800**



Gambar Histogram distribusi theta

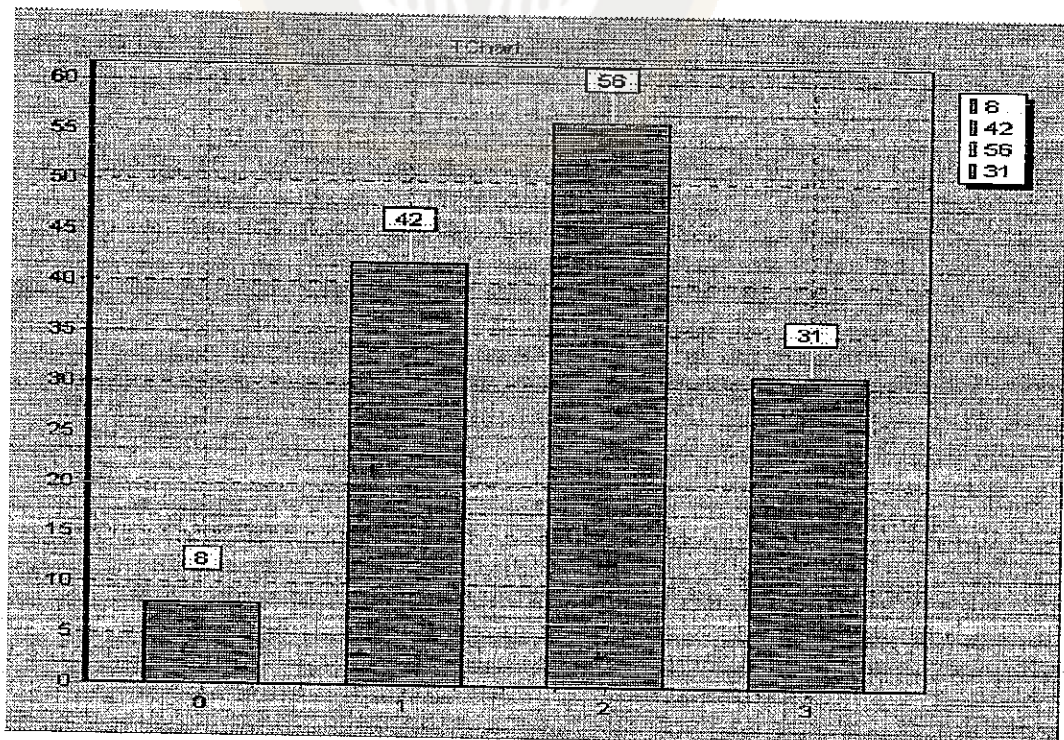


Gambar Histogram distribusi eigen vektor 1

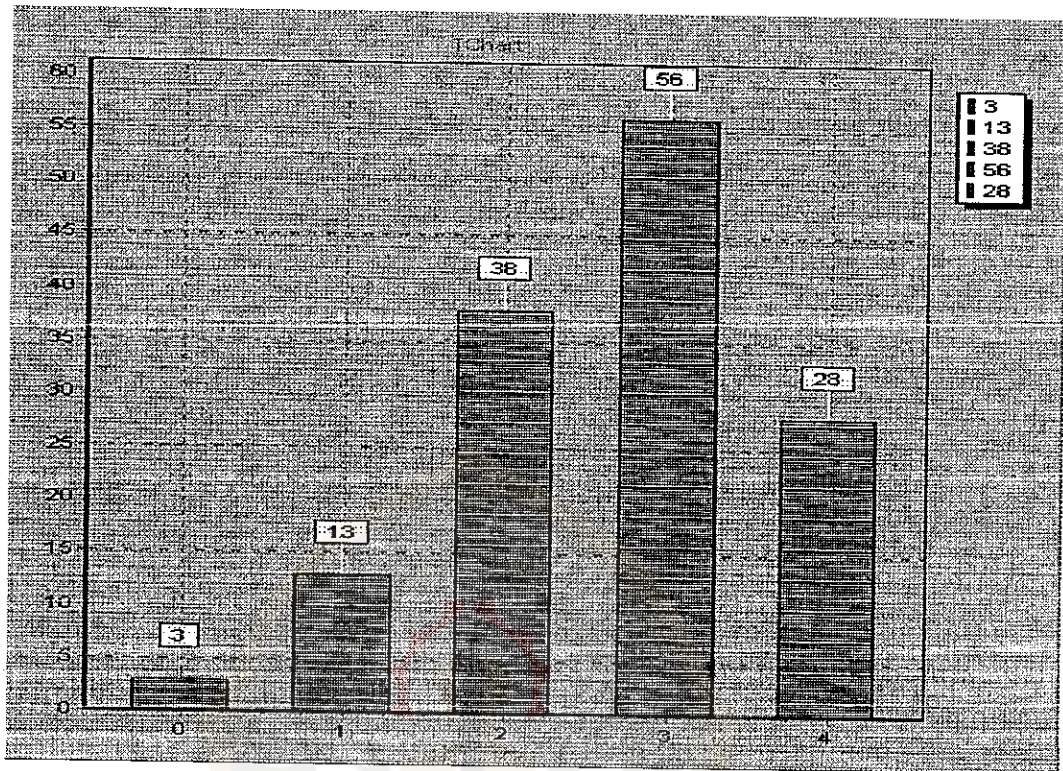


Gambar Histogram distribusi eigen vektor 2

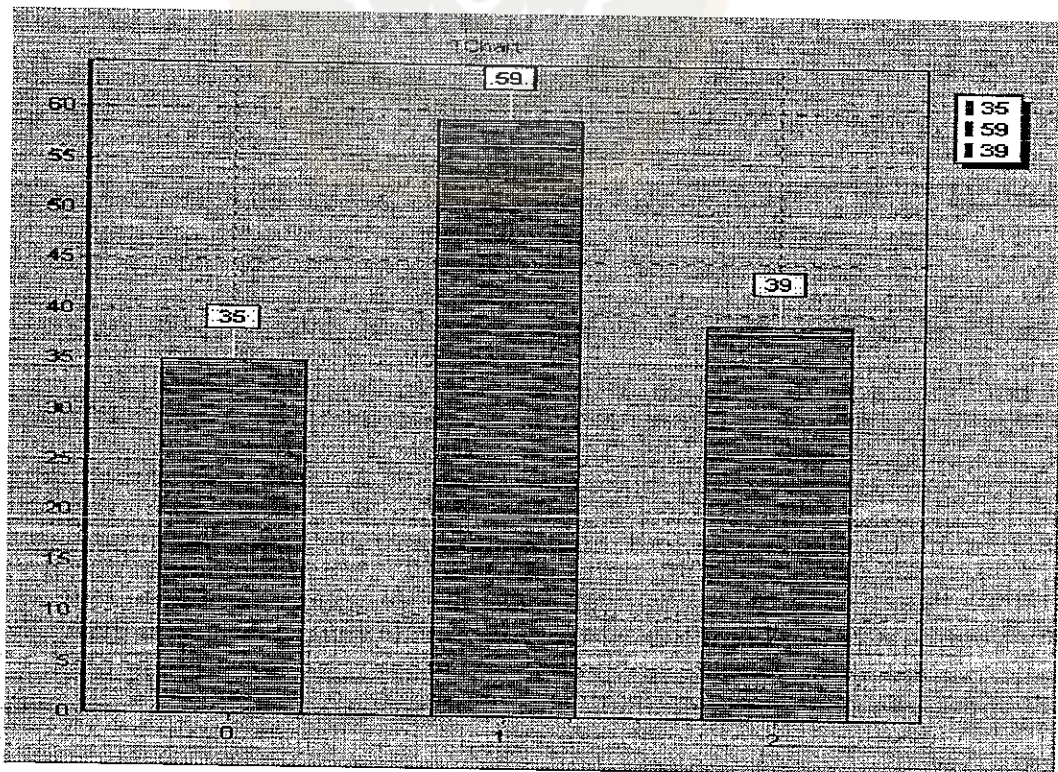
### Replikasi 400



Gambar Histogram distribusi theta

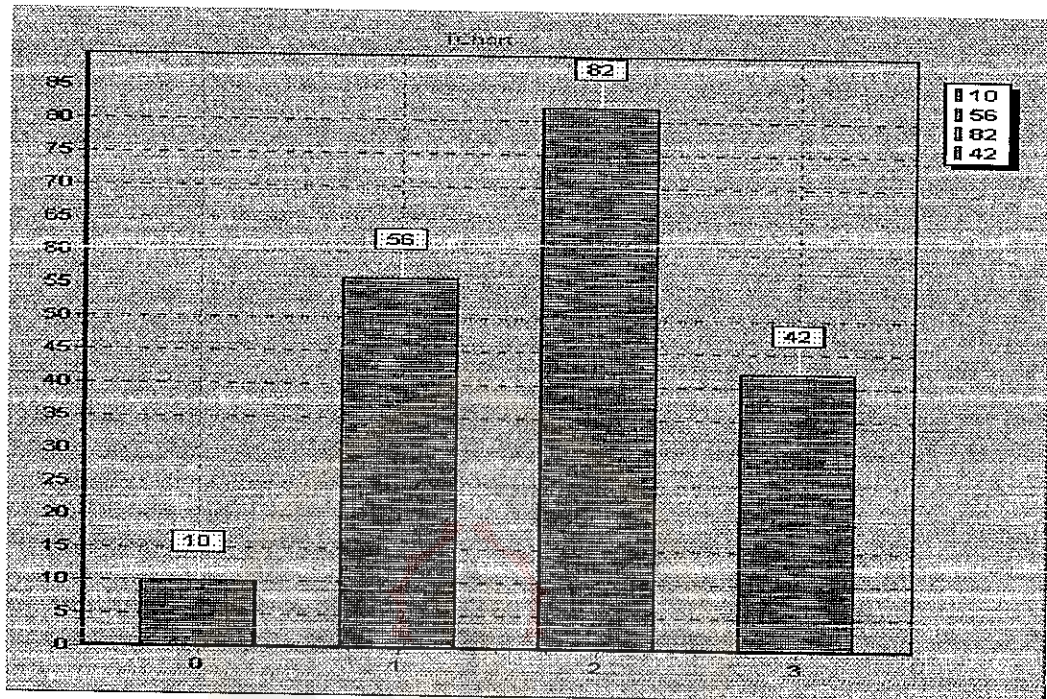


Gambar Histogram distribusi eigen vektor 1

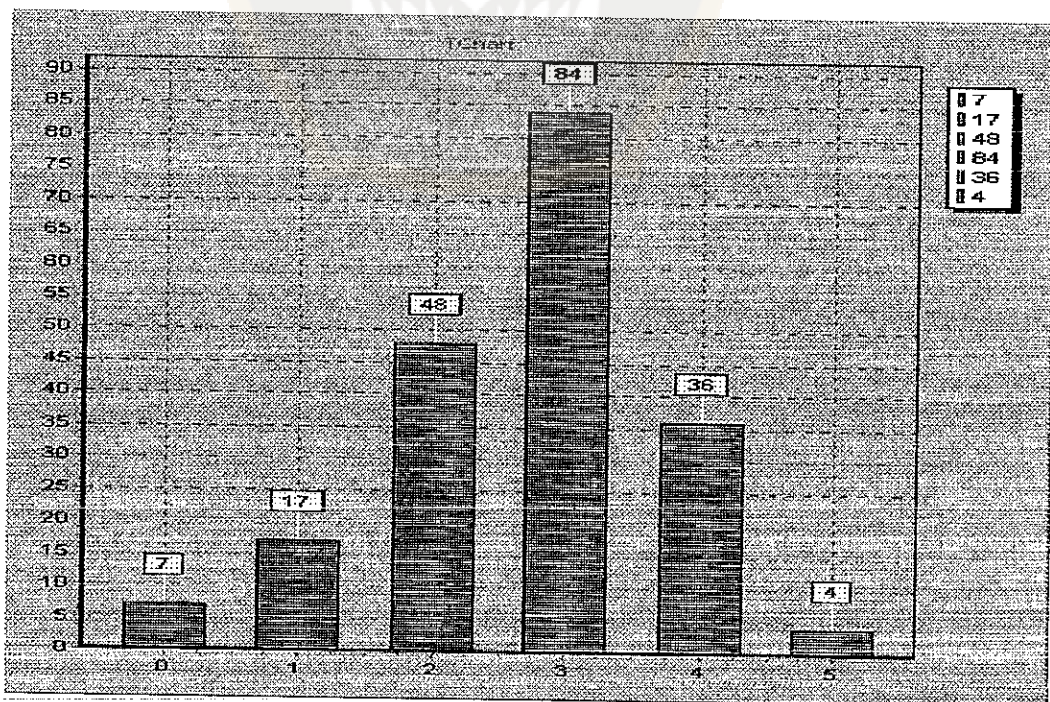


Gambar Histogram distribusi eigen vektor 2

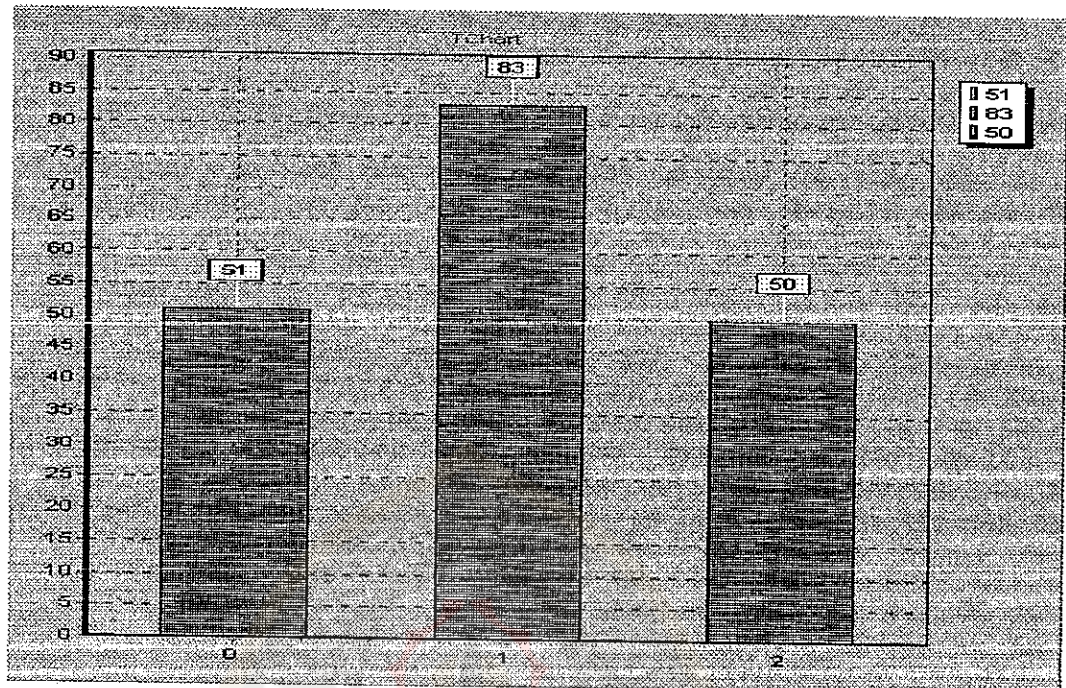
### Replikasi 200



Gambar Histogram distribusi theta

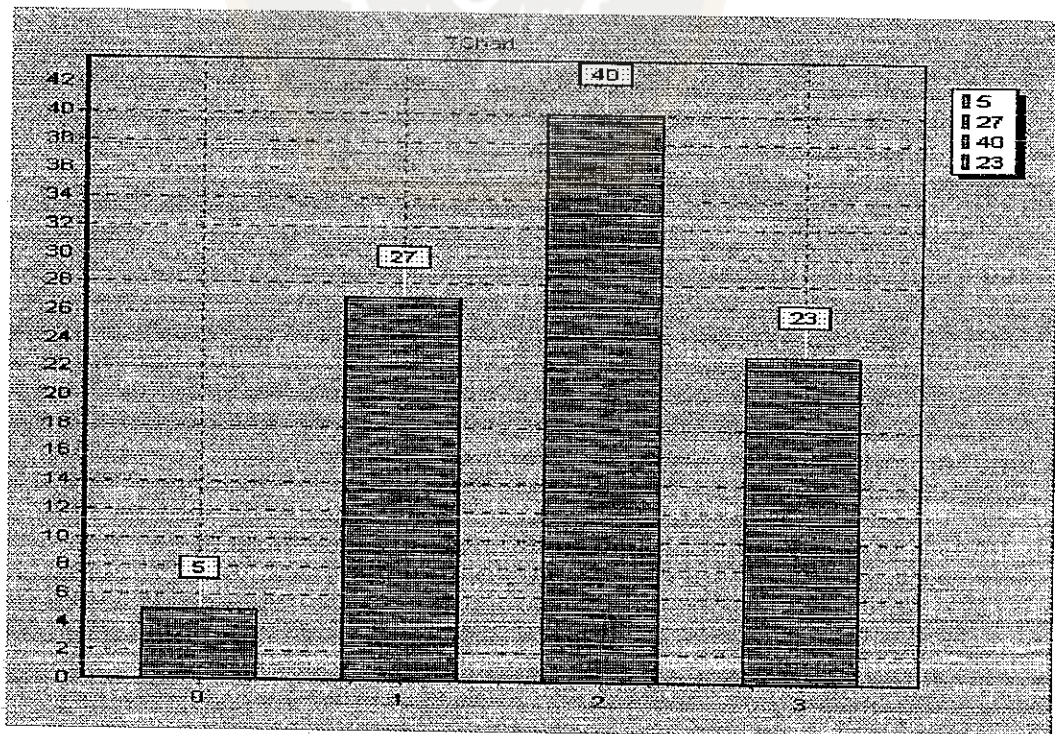


Gambar Histogram distribusi eigen vektor 1



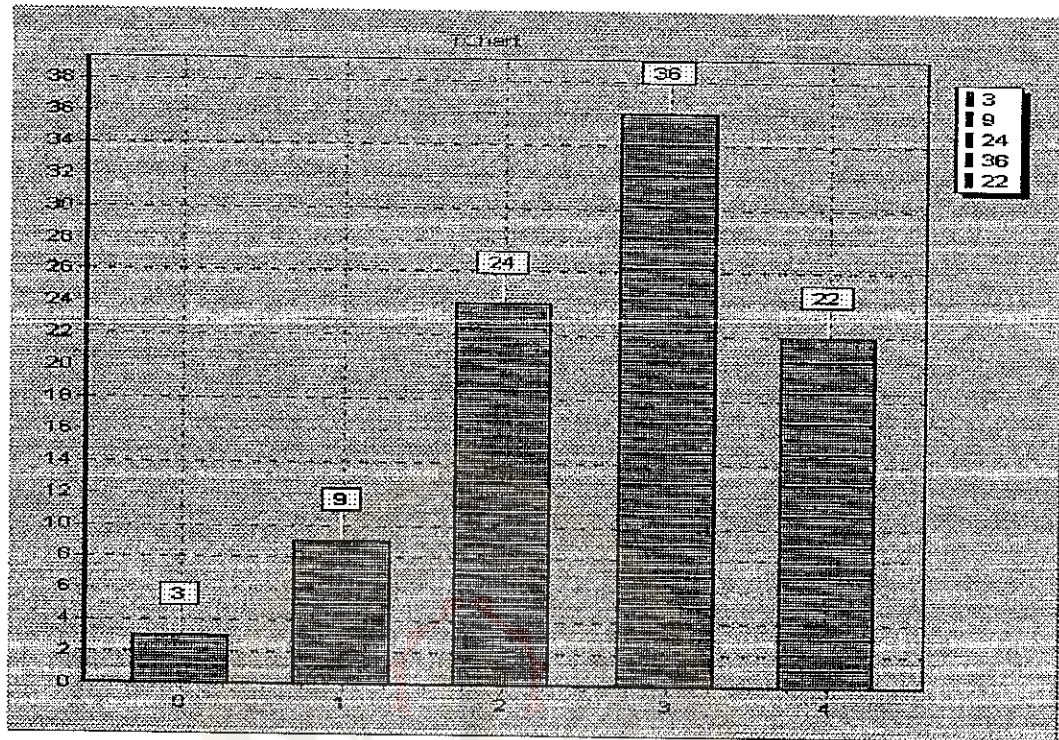
Gambar Histogram distribusi eigen vektor 2

Replikasi 100

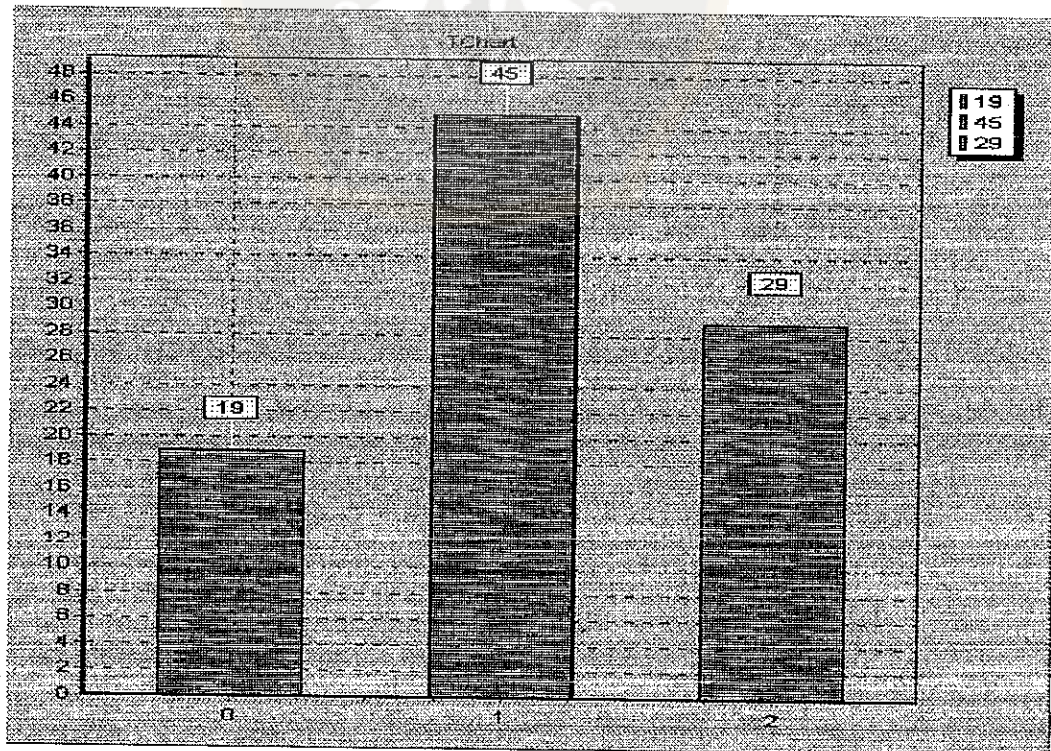


Gambar Histogram distribusi theta

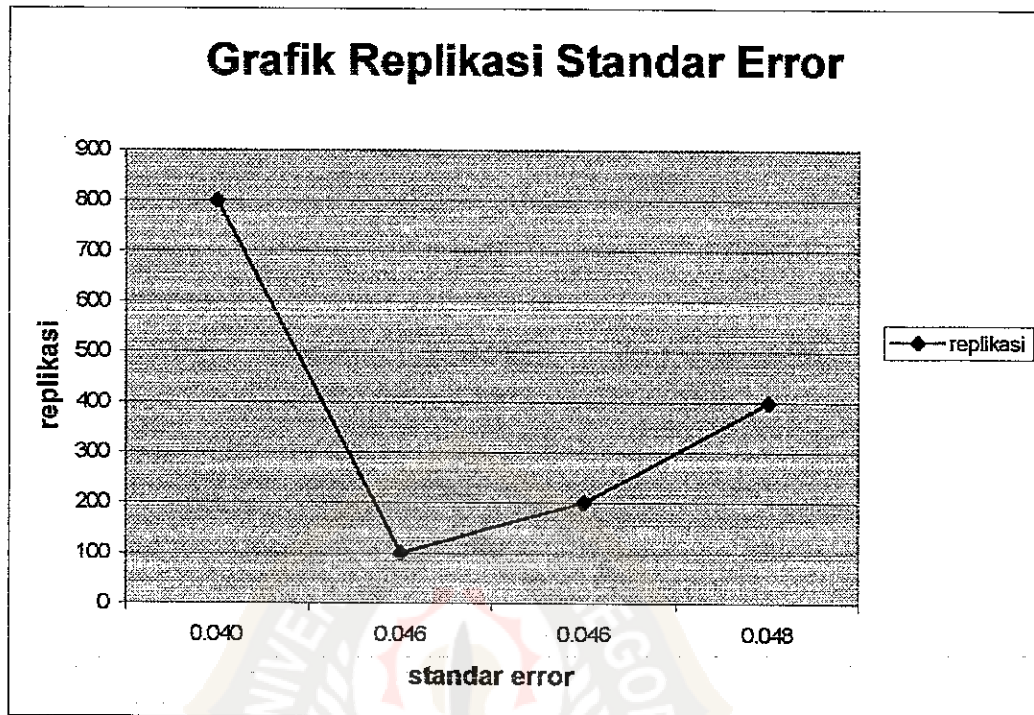




Gambar Histogram distribusi eigen vektor 1



Gambar Histogram distribusi eigen vektor 2



**DATA PERHITUNGAN****1. Perhitungan Soal****Matrik Covariance**

302.293	125.777	100.425	105.065	116.871
125.777	170.878	84.190	93.597	97.365
100.425	84.190	111.603	110.839	118.940
105.065	93.597	110.839	217.876	152.213
116.871	97.365	118.940	152.213	297.016

**Eigen Value**

678.848  
199.444  
105.473  
83.786  
32.117

**Eigen Vektor**

0.507	0.745	0.300	0.304	0.079
0.368	0.210	-0.387	-0.796	0.191
0.345	-0.071	-0.160	-0.003	-0.922
0.450	-0.294	-0.612	0.499	0.295
0.536	-0.556	0.600	-0.157	0.140

Theta :  
0.617

**2. Replikasi 800****Matrik Covariance**

337,5	161,5	109,1	112,3	116,8
161,5	189,5	83,65	79,86	93,02
109,1	83,65	108,5	99,50	108,8
112,3	79,86	99,50	191,5	131,9
116,8	93,01	108,8	131,9	256,1

**Eigen Value**

677,16  
200,76  
89,381  
83,273  
32,732

**Eigen Vektor**

0.5917	0.6283	0.1651	0.4736	0.0605
0.4068	0.2651	-0.463	-0.720	0.1739
0.3320	-0.140	0.0857	-0.141	-0.918
0.3981	-0.369	0.7197	-0.298	0.3135
0.4646	-0.615	-0.482	0.3841	0.1581

Theta :

0.625

Standar Error Theta :

Alpha: 0.040

Alpha<sub>0.16</sub>: 0.036

Alpha<sub>0.10</sub>: 0.040

Alpha<sub>0.05</sub>: 0.039

Waktu awal replikasi 09:29:51

Waktu akhir replikasi 09:29:54

Standar Error eigen vektor 1 :

Alpha: 0.061

Alpha<sub>0.16</sub>: 0.061

Alpha<sub>0.10</sub>: 0.058

Alpha<sub>0.05</sub>: 0.061

Waktu awal replikasi 09:33:38

Waktu akhir replikasi 09:33:41

Standar Error eigen vektor 2 :

Alpha: 0.041

Alpha<sub>0.16</sub>: 0.038

Alpha<sub>0.10</sub>: 0.040

Alpha<sub>0.05</sub>: 0.040

Waktu awal replikasi 09:34:37

Waktu akhir replikasi 02:34:40

### 3. Replikasi 400

#### Matrik Covariance

293.6	93.91	124.7	124.4	116.8
93.91	130.8	76.26	74.85	61.57
124.7	76.26	137.3	134.4	126.9
124.4	74.85	134.4	229.9	159.7
116.8	61.57	126.9	159.7	305.4

#### Eigen value

684.85  
192.91  
107.19  
80.576  
31.620

#### Eigen vektor

0.5033	0.7040	0.4399	0.2040	0.1264
0.2646	0.2452	-0.383	-0.817	0.2345
0.3946	0.0236	-0.226	-0.014	-0.890
0.4854	-0.175	-0.604	0.4906	0.3569
0.5342	-0.642	0.4924	-0.222	0.0978

Theta :  
0.624

#### Standar Error Theta :

Alpha: 0.048  
Alpha<sub>0.16</sub>: 0.046  
Alpha<sub>0.10</sub>: 0.048  
Alpha<sub>0.05</sub>: 0.049

Waktu awal replikasi 09:28:11

Waktu akhir replikasi 09:28:23

#### Standar error eigen vektor 1:

Alpha: 0.057  
Alpha<sub>0.16</sub>: 0.061  
Alpha<sub>0.10</sub>: 0.060  
Alpha<sub>0.05</sub>: 0.059

Waktu awal replikasi 09:23:00

Waktu akhir replikasi 09:23:13

Standar error eigen vektor 2 :

Alpha: 0.043

Alpha<sub>0.16</sub>: 0.043

Alpha<sub>0.10</sub>: 0.043

Alpha<sub>0.05</sub>: 0.044

Waktu awal replikasi 09:25:04

Waktu akhir replikasi 09:25:17

#### 4. Replikasi 200

Matrik Covariance

282.314	109.727	61.871	61.190	78.261
109.727	168.767	66.461	75.693	76.022
61.871	66.461	84.671	92.884	87.615
61.190	75.693	92.884	229.710	103.693
78.261	76.022	87.615	103.693	229.157

Eigen Value

535.640

215.208

125.371

91.742

26.658

Eigen Vektor

0.520	0.755	0.034	0.396	0.031
0.411	0.159	0.139	-0.870	0.172
0.323	-0.157	0.030	-0.055	-0.931
0.469	-0.507	0.619	0.277	0.252
0.486	-0.350	-0.772	0.081	0.198

Theta :

0.539

Standar Error Theta :

Alpha: 0.046

Alpha<sub>0.16</sub>: 0.049

Alpha<sub>0.10</sub>: 0.047

Alpha<sub>0.05</sub>: 0.047

Waktu awal replikasi 02:16:32

Waktu akhir replikasi 02:16:40

Standar Error eigen vektor 1 :

Alpha: 0.057

Alpha<sub>0.16</sub>: 0.058

Alpha<sub>0.10</sub>: 0.057

Alpha<sub>0.05</sub>: 0.057

Waktu awal replikasi 02:24:16

Waktu akhir replikasi 02:24:25

Standar Error eigen vektor 2 :

Alpha: 0.042

Alpha<sub>0.16</sub>: 0.043

Alpha<sub>0.10</sub>: 0.043

Alpha<sub>0.05</sub>: 0.043

Waktu awal replikasi 02:25:19

Waktu akhir replikasi 02:25:27

### 5. Replikasi 100

Matrik Covariance

299.226	127.136	97.010	138.601	129.029
127.136	167.202	77.798	87.182	93.544
97.010	77.798	106.133	104.135	111.712
138.601	87.182	104.135	207.590	160.791
129.029	93.544	111.712	160.791	307.231

Eigen value

694.201

184.328

91.622

82.212

35.020

Eigen vektor

0.527      0.666      0.456      0.266      0.017

0.346      0.282      -0.853      0.087      -0.256

0.317	-0.052	-0.183	-0.242	0.897
0.458	-0.149	0.161	-0.787	-0.350
0.541	-0.672	0.072	0.494	-0.082

Theta :

0.638

Standar Error Theta :

Alpha: 0.046

Alpha<sub>0.16</sub>: 0.048

Alpha<sub>0.10</sub>: 0.048

Alpha<sub>0.05</sub>: 0.048

Waktu awal replikasi 02:17:53

Waktu akhir replikasi 02:17:58

Standar error eigen vektor 1:

Alpha: 0.061

Alpha<sub>0.16</sub>: 0.060

Alpha<sub>0.10</sub>: 0.061

Alpha<sub>0.05</sub>: 0.062

Waktu awal replikasi 02:23:48

Waktu akhir replikasi 02:23:52

Standar error eigen vektor 2 :

Alpha: 0.043

Alpha<sub>0.16</sub>: 0.043

Alpha<sub>0.10</sub>: 0.042

Alpha<sub>0.05</sub>: 0.040

Waktu awal replikasi 02:25:53

Waktu akhir replikasi 02:25:57