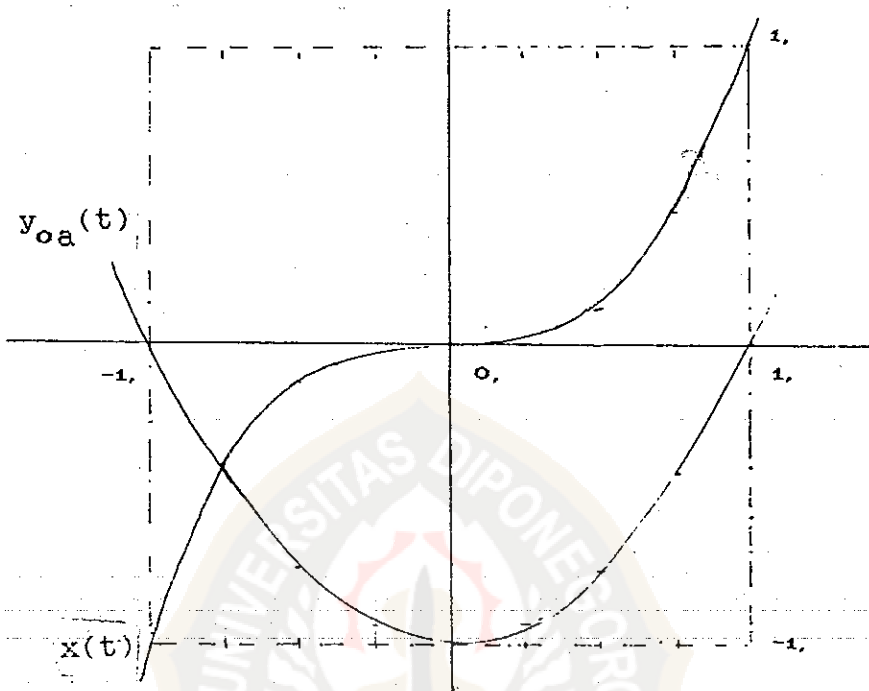
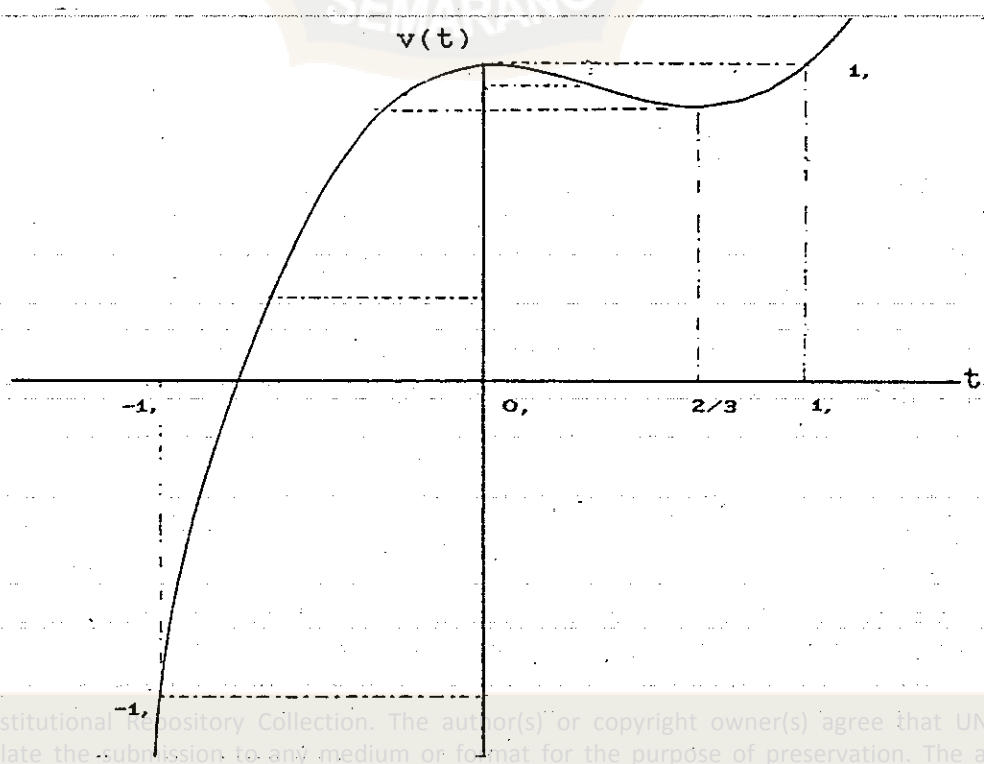


Lampiran 1

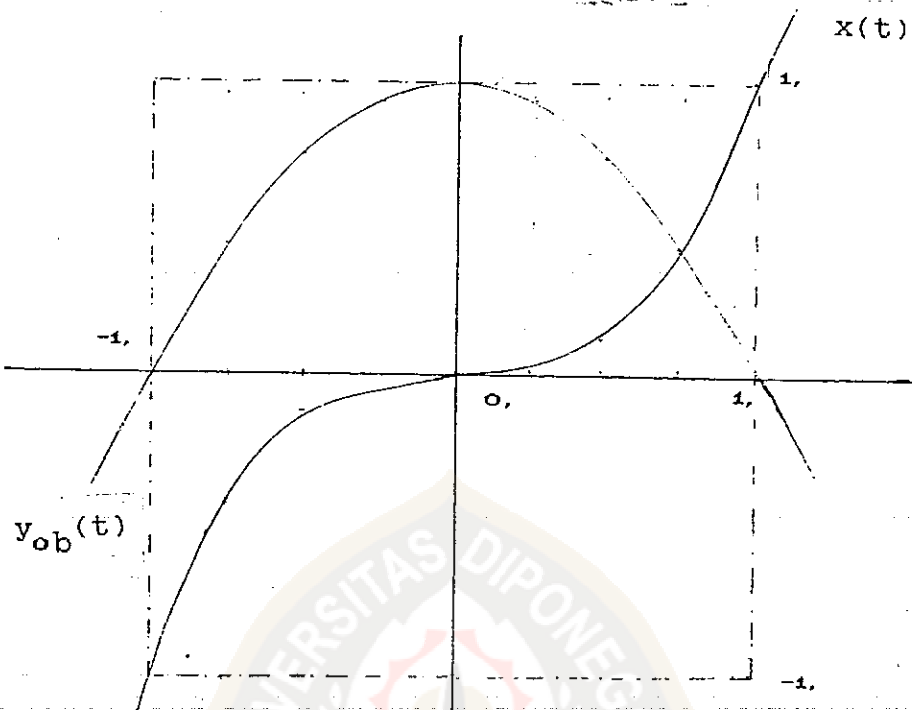


Gambar 1 : Grafik $x(t) = t^3$ dan $y_{0a}(t) = -1 + t^2$

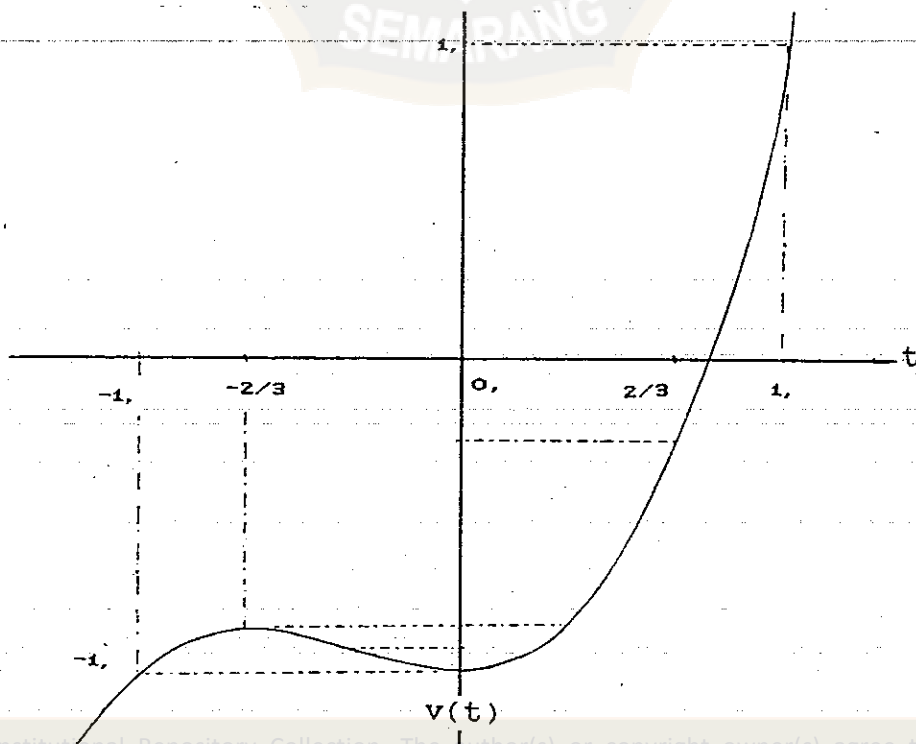


Gambar 2 : Grafik $v(t) = t^3 + 1 - t^2$

Lampiran 2

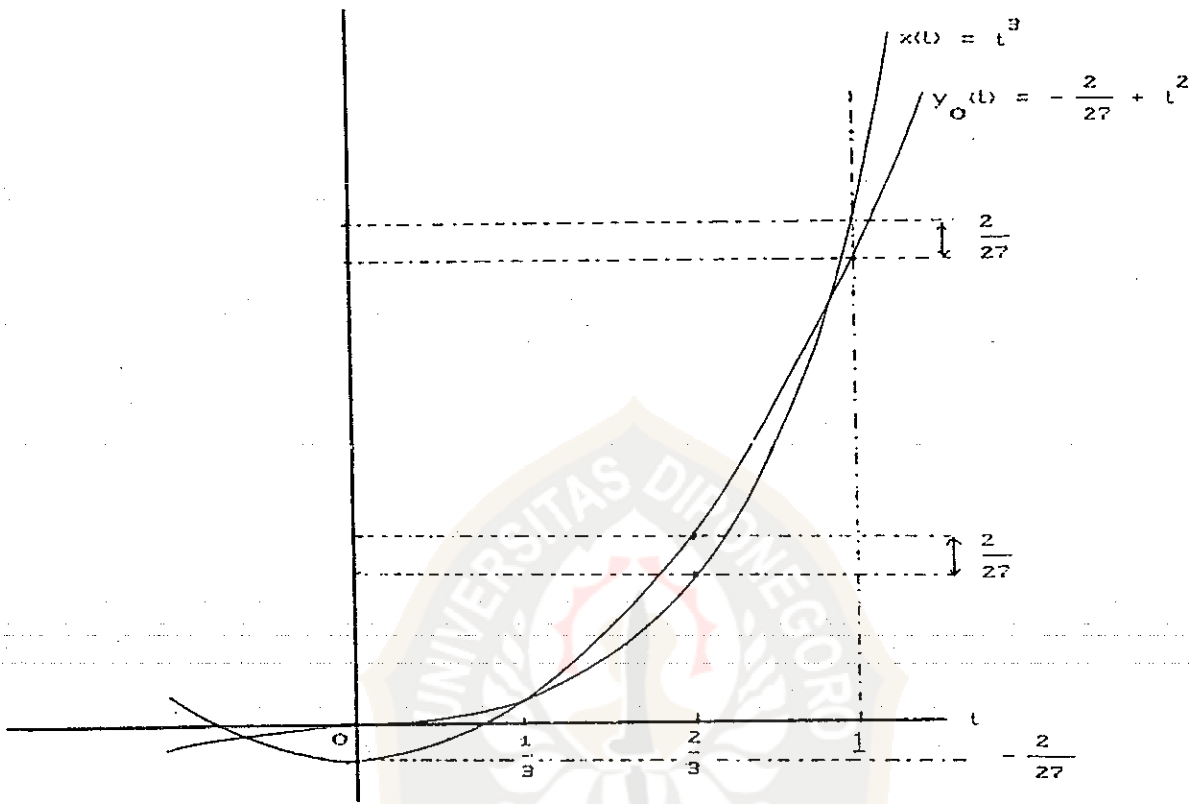


Gambar 3 : Grafik $x(t) = t^3$ dan $y_{ob} = 1 - t^2$

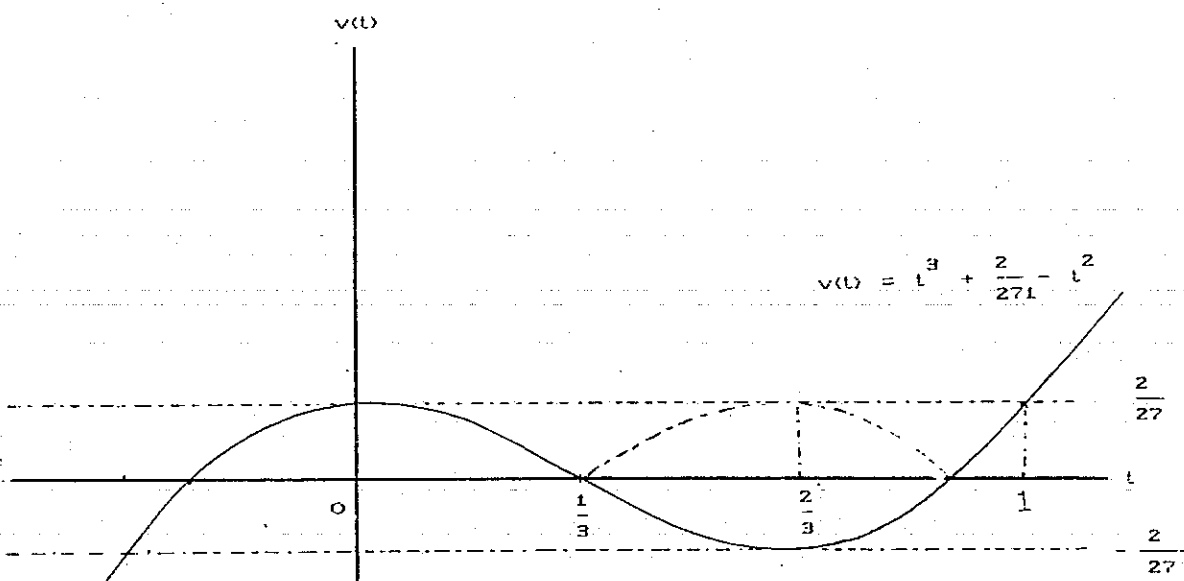


Gambar 4 : Grafik $v(t) = t^3 - 1 + t^2$

Lampiran 3



Gambar 5 : Grafik $x(t) = t^3$ dan $y(t) = -\frac{2}{27} + t^2$



Gambar 6 : Grafik $v(t) = t^3 + \frac{2}{27} - t^2$