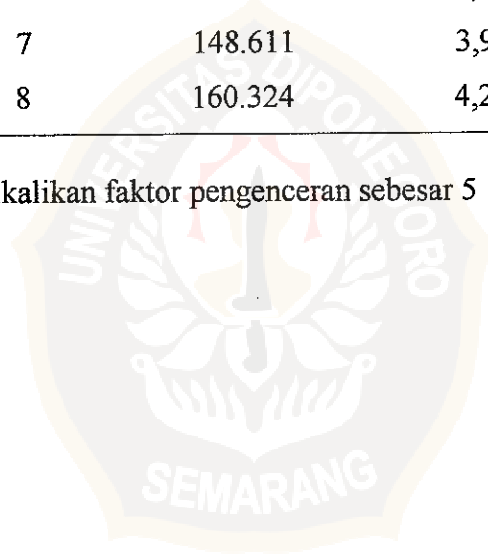


Lampiran 1

Luas puncak dan konsentrasi etanol sampel

No sampel	Luas puncak	Konsentrasi (%)*
1	160.292	4,28
2	176.443	4,75
3	152.833	4,07
4	159.643	4,26
5	159.062	4,24
6	159.208	4,25
7	148.611	3,95
8	160.324	4,28

* dikalikan faktor pengenceran sebesar 5



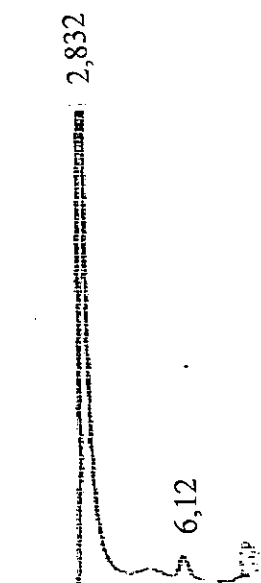
Lampiran 2

Konsentrasi etanol sampel dengan densimetri

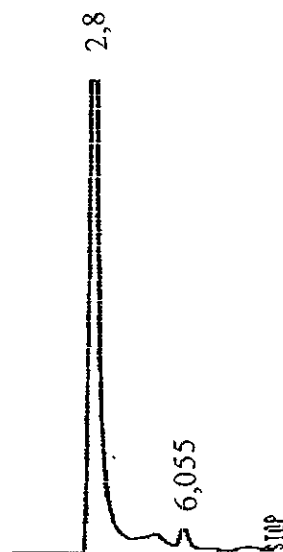
No sampel	Konsentrasi (%)
1	3,43
2	3,22
3	3,64
4	3,57
5	3,57



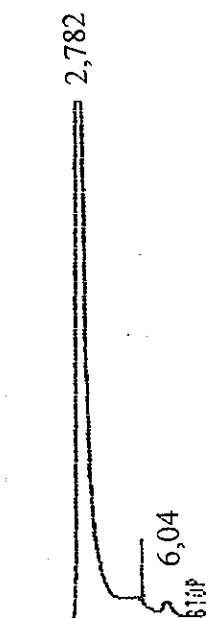
Lampiran 3. Kromatogram



Etanol standar 0,25 %



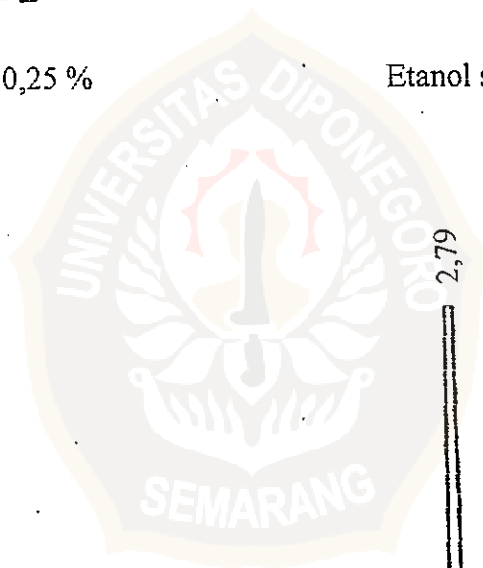
Etanol standar 0,50 %

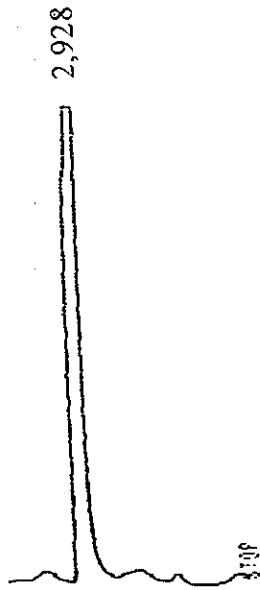


Etanol standar 1,00 %

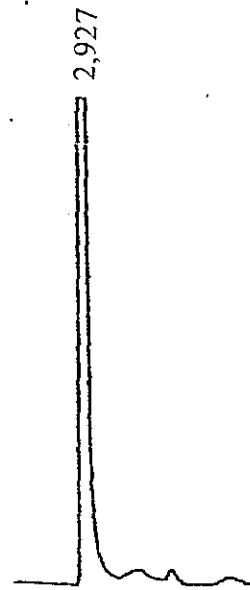


Etanol standar 1,25 %

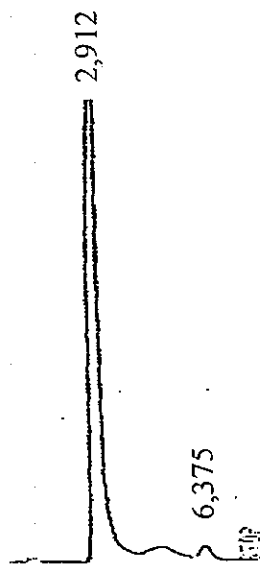




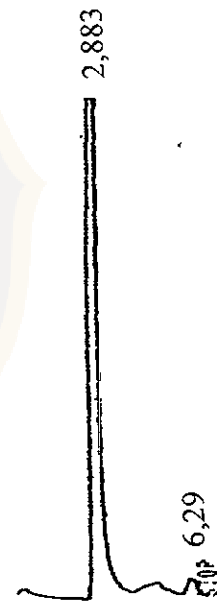
Etanol sampel 1



Etanol sampel 2

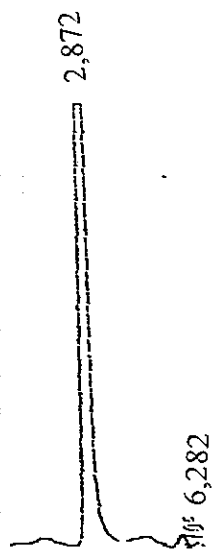


Etanol sampel 3

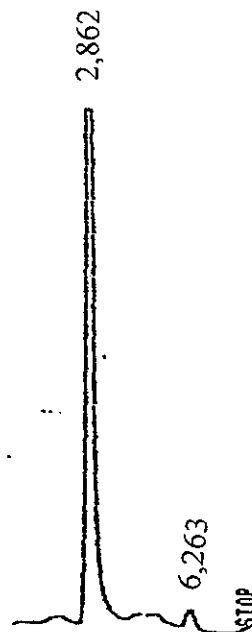


Etanol sampel 4

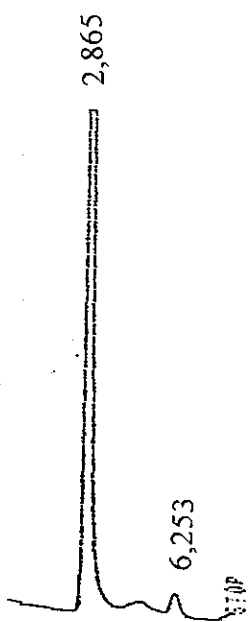




Etanol sampel 5



Etanol sampel 6



Etanol sampel 7



Etanol sampel 8



Lampiran

Tabel
Hubungan antara kadar alkohol (% isi) pada 15,56° C
dengan berat jenis pada berbagai suhu

Berat jenis	15.56	20/20	22/22	24/24	25/25	26/26	28/28	30/30	32/32	34/34	35/35	36/36
1.0000	0.00	0.00	0.00	0.00	0.00	0.00	0.00	0.00	0.00	0.00	0.00	0.00
0.9999	0.7	0.7	0.7	0.7	0.7	0.7	0.7	0.7	0.7	0.7	0.7	0.7
98	.13	.13	.13	.13	.13	.13	.13	.13	.13	.13	.13	.13
97	.20	.20	.20	.20	.20	.20	.20	.20	.20	.20	.20	.20
96	.27	.28	.28	.28	.28	.28	.28	.28	.28	.28	.28	.28
95	.33	.33	.33	.33	.33	.33	.33	.33	.33	.33	.33	.33
94	.40	.40	.40	.40	.40	.40	.40	.40	.40	.40	.40	.40
93	.47	.46	.46	.46	.46	.46	.46	.46	.46	.46	.46	.46
92	.53	.53	.53	.53	.53	.53	.53	.53	.53	.53	.53	.53
91	.60	.60	.60	.60	.60	.60	.60	.60	.60	.60	.60	.60
90	.67	.66	.66	.66	.66	.66	.66	.66	.66	.66	.66	.66
89	.73	.73	.73	.73	.73	.73	.73	.73	.73	.73	.73	.73
88	.80	.80	.80	.80	.80	.80	.80	.80	.80	.80	.80	.80
87	.87	.87	.87	.87	.87	.87	.87	.87	.87	.87	.87	.87
86	.93	.93	.93	.93	.93	.93	.93	.93	.93	.93	.93	.93
85	1.00	1.00	1.00	1.00	1.00	1.00	1.00	1.00	1.00	1.00	1.00	1.00
84	.07	.07	.07	.07	.07	.07	.07	1.06	1.06	1.06	1.06	1.06
83	.14	.14	.14	.13	.13	.13	.13	.13	.13	.13	.13	.13
82	.20	.20	.20	.20	.20	.20	.20	.19	.19	.19	.19	.19
81	.27	.27	.27	.27	.27	.27	.27	.26	.26	.26	.26	.26
80	.34	.34	.34	.34	.34	.34	.33	.32	.32	.32	.32	.32
79	.41	.41	.41	.40	.40	.40	.40	.39	.39	.39	.39	.39
78	.48	.48	.48	.47	.47	.47	.47	.46	.46	.46	.46	.46
77	.54	.54	.54	.54	.54	.54	.53	.53	.53	.53	.53	.53
76	.61	.61	.61	.60	.60	.60	.60	.59	.59	.59	.59	.59
75	.68	.68	.68	.67	.67	.67	.67	.66	.66	.66	.66	.66
74	.75	.75	.75	.74	.74	.74	.73	.72	.72	.72	.72	.72
73	.82	.81	.81	.81	.81	.81	.80	.80	.80	.80	.80	.80
72	.88	.88	.88	.87	.87	.87	.86	.86	.86	.86	.86	.86
71	.95	.95	.95	.94	.94	.94	.93	.93	.93	.93	.93	.93
70	2.02	2.02	2.02	2.01	2.01	2.01	2.00	2.00	2.00	.99	.99	.99
69	.09	.09	.09	.08	.08	.08	.07	.06	.06	2.05	2.05	2.05
68	.16	.15	.15	.14	.14	.14	.14	.14	.13	.12	.12	.12
67	.23	.22	.22	.21	.21	.21	.20	.20	.20	.19	.19	.19
66	.30	.29	.29	.28	.28	.28	.27	.27	.27	.26	.26	.26
65	.37	.36	.36	.35	.35	.35	.34	.34	.33	.32	.32	.32
64	.43	.43	.43	.42	.42	.42	.41	.41	.40	.39	.39	.39
63	.50	.50	.50	.49	.49	.49	.48	.48	.47	.46	.46	.46
62	.57	.57	.57	.56	.56	.56	.55	.54	.54	.53	.53	.53
61	.64	.64	.64	.63	.63	.63	.62	.61	.60	.59	.59	.59
60	.71	.70	.70	.70	.70	.70	.69	.68	.67	.67	.66	.66
59	.78	.77	.77	.77	.77	.77	.76	.75	.74	.74	.73	.73
58	.85	.84	.84	.83	.83	.83	.82	.82	.81	.81	.80	.80
57	.92	.91	.91	.90	.90	.90	.89	.88	.87	.87	.86	.86
56	.99	.98	.98	.97	.97	.97	.96	.95	.94	.94	.93	.93
55	3.06	3.05	3.05	3.04	3.04	3.04	3.03	3.02	3.01	3.01	3.00	3.00
54	.13	.12	.12	.11	.11	.11	.10	.09	.08	.08	.07	.07
53	.20	.19	.19	.18	.18	.18	.17	.16	.15	.15	.14	.14
52	.27	.26	.26	.25	.25	.25	.24	.23	.22	.22	.21	.21
51	.34	.33	.33	.32	.32	.32	.31	.30	.29	.28	.27	.27
50	.41	.40	.40	.39	.39	.39	.38	.37	.36	.35	.34	.34
49	.49	.47	.47	.46	.46	.46	.45	.44	.43	.42	.41	.41
48	.56	.54	.54	.53	.53	.53	.52	.51	.50	.49	.48	.48
47	.63	.61	.61	.60	.60	.60	.59	.58	.57	.56	.55	.55
46	.70	.68	.68	.67	.67	.67	.66	.65	.64	.63	.62	.62
45	.77	.76	.75	.74	.74	.74	.73	.72	.70	.69	.68	.68
44	.84	.83	.82	.81	.81	.81	.79	.78	.77	.76	.75	.75
43	.91	.90	.89	.88	.88	.88	.86	.85	.84	.83	.82	.82
42	.99	.97	.96	.95	.95	.95	.93	.92	.91	.90	.89	.89
41	4.06	4.04	4.03	4.02	4.02	4.02	4.00	.99	.98	.97	.96	.96
40	.13	.11	.10	.10	.09	.09	.07	4.06	4.05	4.04	4.03	4.03
39	.20	.18	.17	.17	.16	.16	.14	.13	.12	.11	.10	.10
38	.28	.26	.25	.25	.24	.24	.23	.21	.20	.19	.17	.17
37	.35	.33	.32	.32	.31	.31	.30	.28	.27	.26	.24	.24
36	.42	.40	.39	.39	.38	.38	.37	.36	.35	.33	.31	.30
35	.50	.48	.47	.46	.45	.45	.44	.43	.42	.40	.38	.37
34	.57	.55	.54	.53	.52	.51	.50	.49	.48	.46	.44	.44
33	.64	.62	.61	.60	.59	.58	.57	.56	.54	.53	.52	.51
32	.71	.69	.68	.67	.66	.65	.64	.63	.61	.60	.58	.58
31	.79	.77	.76	.75	.74	.73	.72	.70	.68	.67	.66	.65

Tabel (sambungan)
 Hubungan antara kadar alkohol (% isi) pada 15,56 °C
 dengan berat jenis pada berbagai suhu

Berat jenis	15,56	20/23	22/22	24/24	25/25	26/26	28/28	30/30	32/32	34/34	35/35	36/36
0,9930	4,86	4,84	4,83	4,82	4,81	4,80	4,79	4,77	4,75	4,74	4,73	4,72
29	.93	.91	.90	.89	.88	.87	.86	.84	.82	.81	.80	.79
28	5,01	.98	.97	.96	.95	.94	.93	.91	.89	.88	.87	.86
27	.08	5,06	5,04	5,03	5,02	5,01	5,00	.98	.96	.95	.94	.93
26	.16	.13	.12	.11	.10	.09	.07	5,05	5,03	5,02	5,01	5,00
25	.23	.21	.19	.18	.17	.16	.14	.12	.10	.09	.08	.07
24	.31	.28	.26	.25	.24	.23	.21	.20	.18	.16	.15	.14
23	.39	.36	.34	.33	.32	.31	.29	.27	.25	.23	.22	.21
22	.46	.43	.41	.40	.39	.38	.36	.34	.32	.30	.29	.28
21	.54	.51	.49	.48	.47	.46	.44	.42	.40	.38	.37	.36
20	.61	.58	.56	.55	.54	.53	.51	.49	.47	.45	.44	.43
19	.69	.66	.64	.62	.61	.60	.58	.56	.54	.52	.51	.50
18	.77	.73	.71	.70	.69	.68	.66	.64	.62	.59	.58	.57
17	.84	.81	.79	.77	.76	.75	.73	.71	.69	.66	.65	.64
16	.92	.88	.86	.85	.84	.83	.80	.79	.76	.74	.73	.72
15	.98	.96	.94	.92	.91	.90	.87	.85	.83	.81	.80	.79
14	6,07	6,03	6,01	6,00	.99	.98	.95	.92	.91	.88	.87	.86
13	.15	.11	.09	.07	6,06	6,05	6,02	6,00	.98	.95	.94	.93
12	.23	.16	.16	.15	.14	.13	.10	.08	6,05	6,02	6,01	6,00
11	.30	.26	.24	.22	.21	.20	.17	.15	.12	.10	.09	.08
10	.38	.34	.32	.30	.29	.28	.25	.23	.20	.17	.16	.15
09	.46	.41	.39	.37	.36	.35	.32	.30	.28	.25	.24	.23
08	.54	.49	.47	.45	.44	.43	.40	.38	.35	.32	.31	.30
07	.62	.57	.55	.53	.52	.51	.48	.45	.42	.39	.38	.37
06	.70	.65	.63	.60	.59	.58	.55	.53	.50	.47	.46	.45
05	.77	.73	.71	.68	.67	.66	.63	.60	.57	.54	.53	.52
04	.85	.80	.78	.75	.74	.73	.70	.68	.65	.62	.60	.59
03	.93	.88	.86	.83	.82	.81	.78	.75	.72	.69	.68	.67
02	7,01	.98	.93	.90	.89	.88	.85	.83	.80	.77	.75	.74
01	.09	7,04	7,01	.98	.97	.96	.92	.90	.87	.84	.82	.81
00	.17	.12	.09	7,00	.05	7,03	7,00	.98	.94	.91	.90	.88
0,8899	.25	.19	.16	.13	.12	.10	.07	7,05	7,01	.98	.97	.96
88	.33	.27	.24	.21	.20	.18	.15	.13	.09	7,06	7,04	7,00
87	.41	.33	.32	.29	.28	.26	.23	.21	.17	.14	.12	.11
86	.50	.40	.40	.37	.36	.34	.31	.28	.24	.21	.19	.18
85	.58	.48	.48	.44	.44	.42	.39	.36	.32	.29	.27	.26
84	.66	.55	.56	.53	.52	.50	.47	.44	.40	.36	.34	.33
83	.74	.62	.64	.60	.59	.57	.54	.51	.47	.44	.42	.40
82	.82	.75	.77	.72	.72	.69	.65	.62	.58	.55	.53	.51
81	.90	.82	.84	.78	.78	.73	.70	.66	.62	.59	.57	.55
80	.98	.90	.92	.85	.85	.81	.78	.74	.70	.66	.64	.62
79	8,07	.98	.95	.92	.91	.89	.86	.82	.78	.74	.72	.70
78	.15	8,06	8,03	8,00	.96	.96	.93	.89	.85	.81	.79	.77
77	.23	.15	.11	.08	8,00	8,04	8,01	.97	.93	.89	.87	.85
76	.32	.23	.19	.16	.14	.12	.09	8,05	8,01	.96	.94	.92
75	.40	.31	.27	.24	.22	.20	.16	.12	.08	8,04	8,02	8,00
74	.48	.39	.35	.32	.30	.28	.24	.20	.16	.11	.09	.07
73	.57	.47	.43	.40	.38	.36	.32	.27	.23	.19	.17	.15
72	.65	.55	.51	.48	.46	.44	.40	.35	.31	.26	.24	.22
71	.73	.63	.59	.56	.54	.52	.48	.43	.39	.34	.32	.30
70	.82	.71	.67	.63	.61	.59	.55	.50	.46	.41	.39	.37
69	.90	.79	.75	.71	.69	.67	.63	.58	.54	.49	.47	.45
68	.98	.88	.84	.79	.77	.75	.71	.66	.61	.56	.54	.52
67	9,07	.98	.92	.87	.85	.83	.78	.73	.68	.64	.62	.60
66	.15	9,04	9,00	.95	.93	.91	.86	.81	.76	.71	.69	.67
65	.24	.13	.08	9,03	9,01	.99	.94	.89	.84	.79	.77	.75
64	.32	.21	.16	.11	.09	9,07	9,02	.96	.91	.86	.84	.82
63	.40	.29	.24	.19	.17	.15	.10	9,04	.96	.92	.92	.90
62	.49	.38	.33	.27	.25	.23	.18	.12	9,07	9,02	.99	.97
61	.57	.46	.41	.35	.33	.31	.26	.20	.15	.10	9,07	9,05
60	.66	.54	.49	.43	.41	.38	.33	.27	.22	.17	.14	.12
59	.74	.62	.57	.51	.49	.46	.41	.35	.30	.25	.22	.19
58	.82	.70	.65	.59	.57	.54	.49	.43	.37	.32	.29	.26
57	.91	.79	.74	.68	.65	.62	.57	.51	.45	.40	.37	.34
56	.99	.87	.82	.76	.73	.70	.65	.59	.53	.47	.44	.41
55	10,06	.95	.90	.84	.81	.78	.72	.66	.60	.54	.51	.48
54	.16	10,03	.98	.92	.89	.86	.80	.74	.68	.62	.59	.56
53	.25	.11	10,06	10,00	.97	.94	.88	.82	.76	.69	.66	.63
52	.33	.20	.14	.08	10,05	10,02	.98	.90	.84	.77	.74	.71
51	.42	.28	.22	.16	.13	.10	10,04	.98	.91	.84	.81	.78