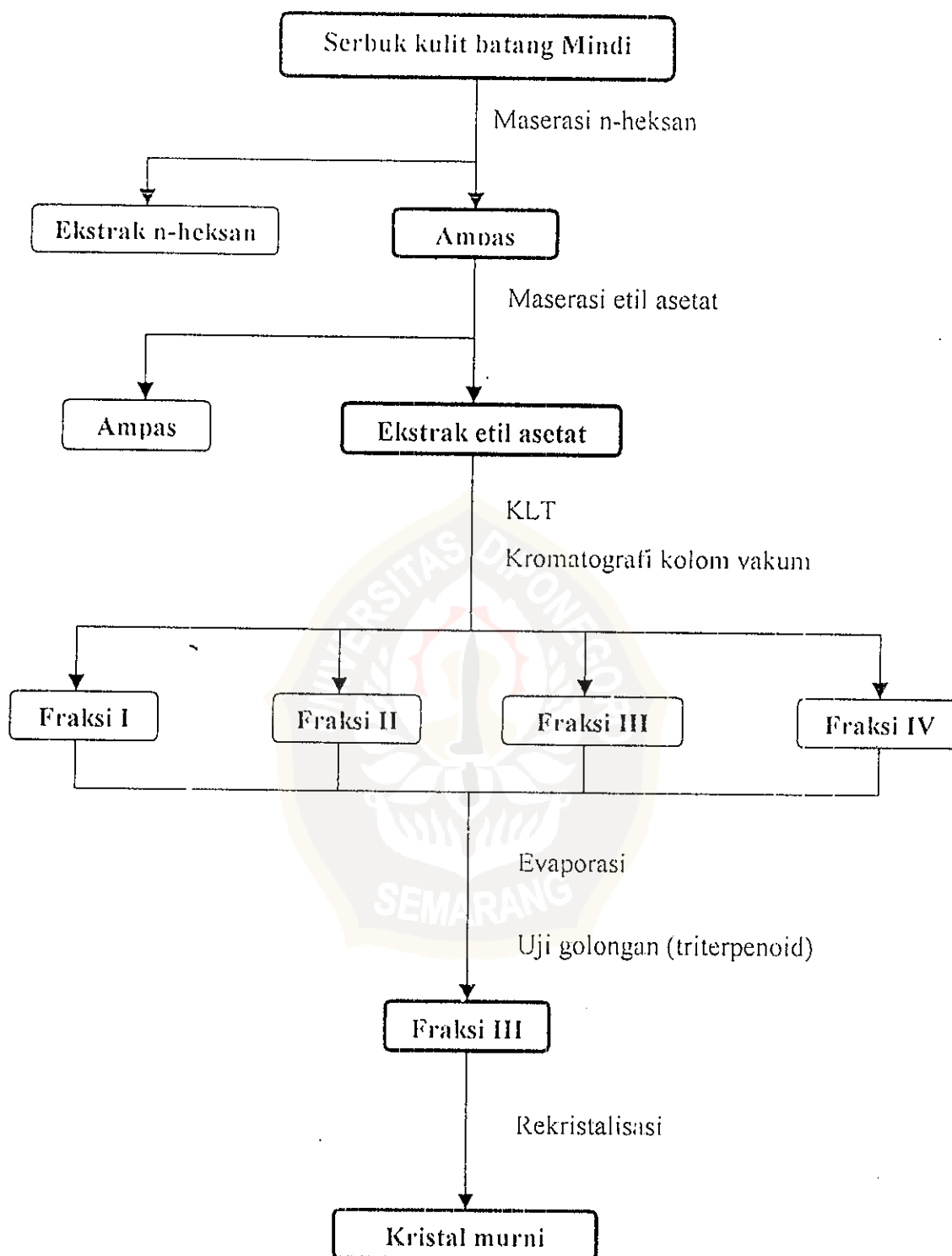


LAMPIRAN

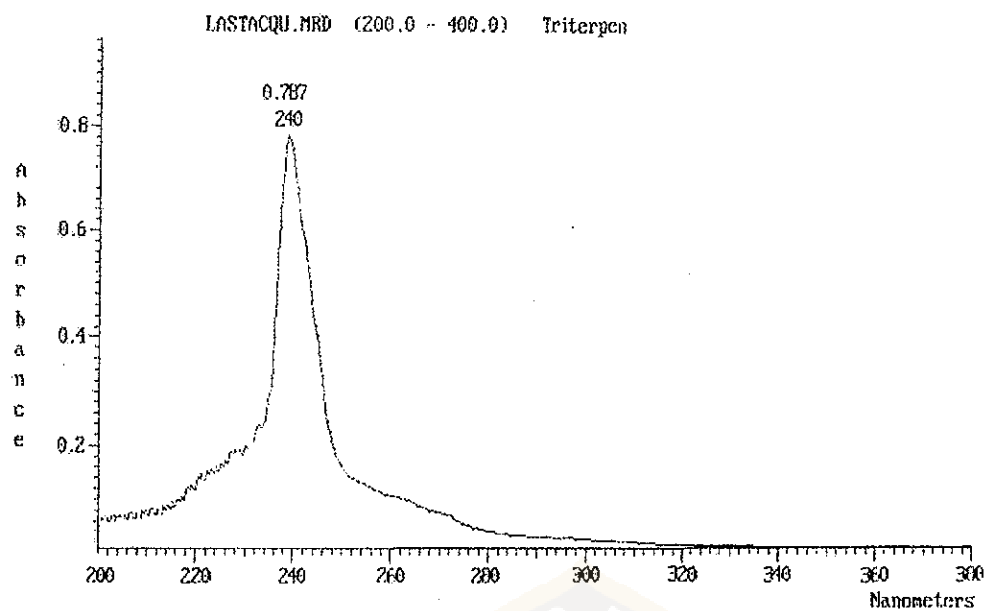


Lampiran . Skema Kerja

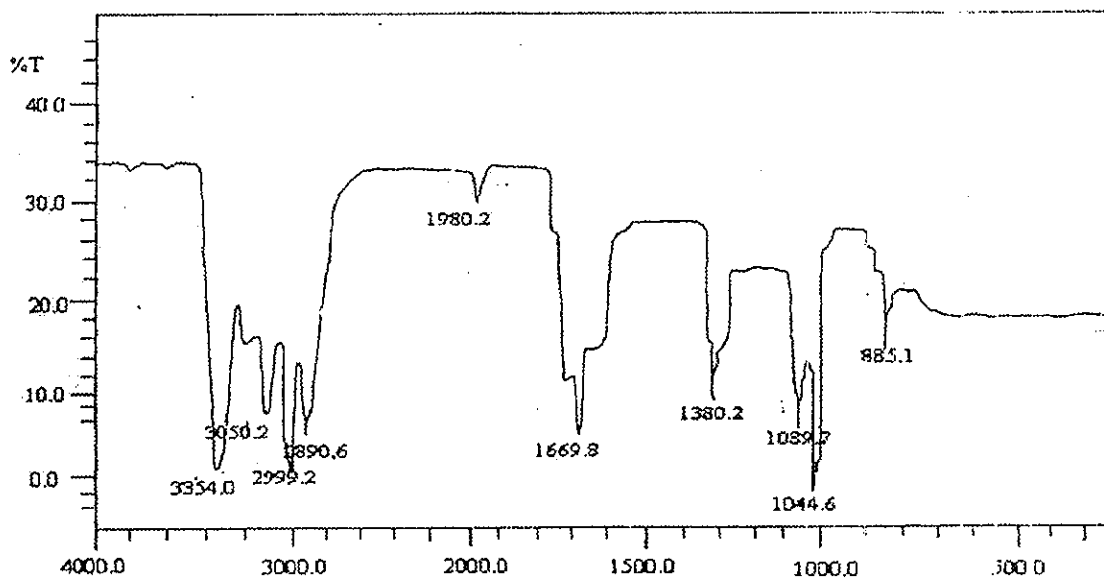


- ❖ Analisis spektrofotometer UV dan IR
- ❖ Uji kemurnian (KLT, titik leleh, kelarutan)

Lampiran 2. Spektrum UV Senyawa Hasil Isolasi



Lampiran 3. Spektrum IR Senyawa Hasil Isolasi



— Wisnu, Minid, 18-6-2002
 Peaktable of WISNU1.1RS, 10 Peaks
 Threshold 80, Noise: 4, No Range selection

Nr	Pos (1/cm)	Inten. (%)
1.	885.1	14.235
2.	1044.6	0.012
3.	1089.7	8.633
4.	1380.2	10.713
5.	1669.8	7.463
6.	1980.2	29.476
7.	2890.6	7.645
8.	2999.2	1.716
9.	3050.2	8.733
10.	3354.0	0.563

