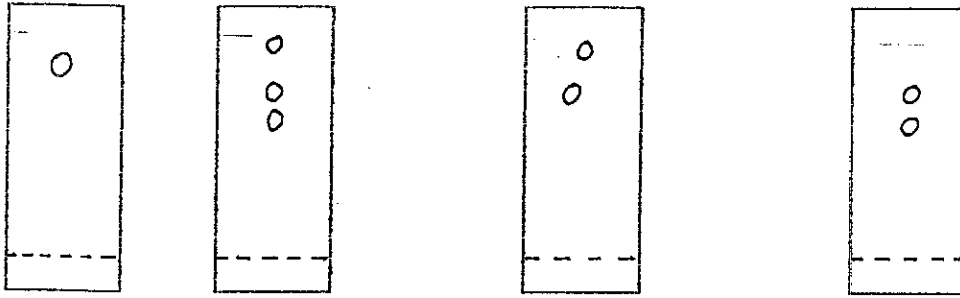


LAMPIRAN

Lampiran 1.

Gambar Hasil Identifikasi Dengan KLT

a) Crude Ekstrak Metanol



Metanol

Metanol : Etil Asetat
(1 : 1)

Metanol : Etil Asetat
(1 : 3)

Metanol : Etil Asetat
(1 : 8)

b) Kristal Hasil Isolasi



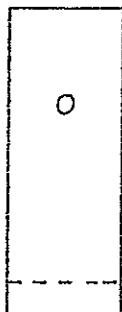
Metanol



n-heksan



Metanol : Etil Asetat
(1 : 1)



Metanol : Etil Asetat
(1 : 3)



Metanol : Etil Asetat
(1 : 8)

Lampiran 2. Spektrum Massa Senyawa Hasil Isolasi

Background Subtract

11/09/98 13:15:58

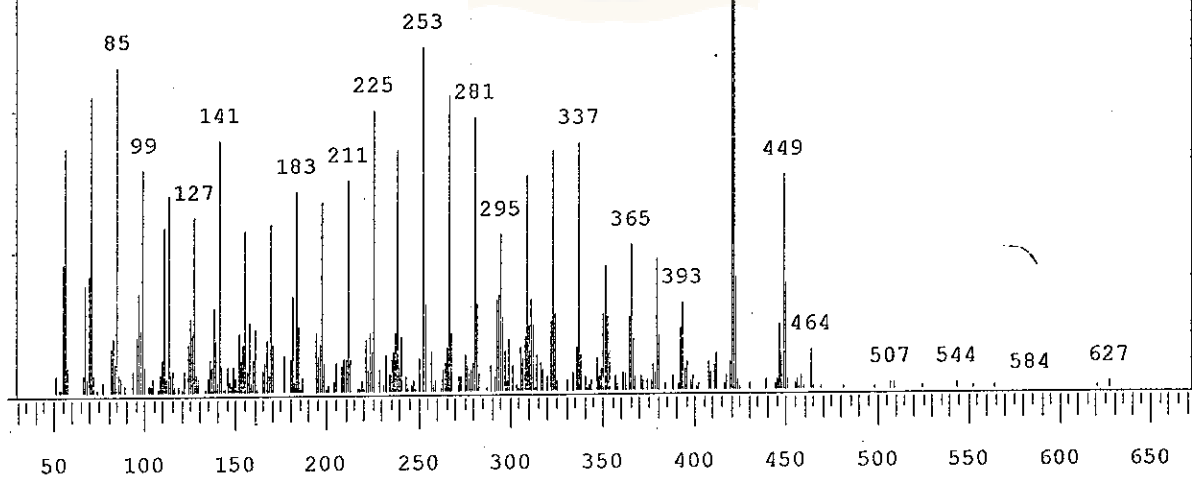
Average of: 1494 to 1498 Minus: 1520 to 1524

100% = 7931

100 %

421

SMP
-
BKG



Date: November 18th, 1998 6:06pm

Finnigan MAT

E # 1 : P(PROBIT) = 3.82035 + .4256233 * LOG(D)
 .990167 R0.01=-.9799631 R0.05=-.9976779
 = 4327800 (95% CONFIDENCE INTERVAL: 6528466 - 2.868953E+13)
 = 590.9933 (95% CONFIDENCE INTERVAL: 10.28567 - 33957.24)
 = 8.070425E-02 (95% CONFIDENCE INTERVAL: 5.566214E-06 - 1170.129)

4256233 SB= .0592685 X50= 2.771582 SX50= .8976276
 S E(NO.) T(NO.) P(%) PCALC.
 5 10 50 48.76725
 3 10 30 32.40055
 2 10 20 18.88478

↑
 urasi jml mati p. jml total.

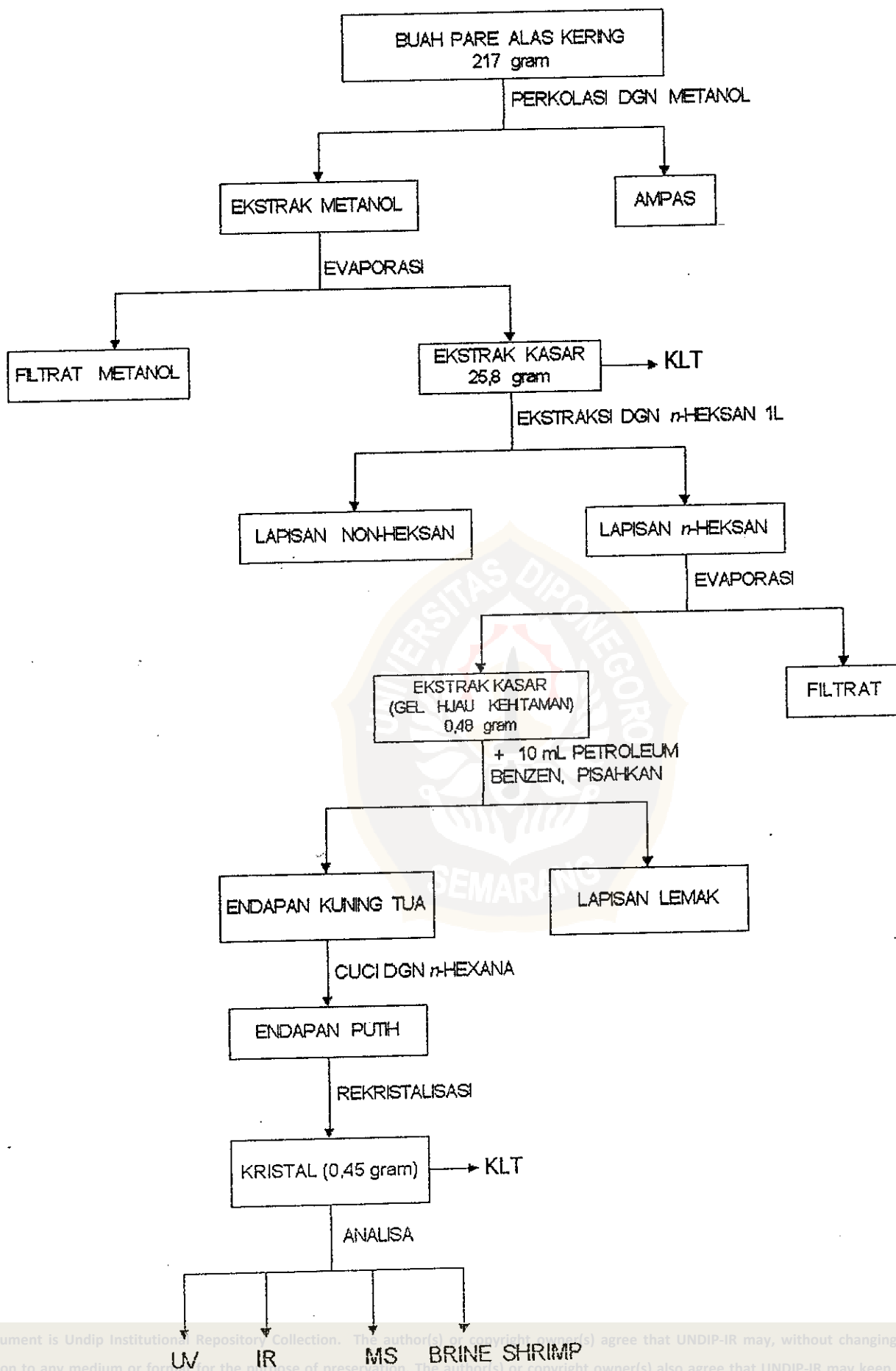
Konsentrasi	jml mati	jml hidup + mati (total)
500 ppm	5	10
	5	10
	4	10
50 ppm	3	10
	4	10
	3	10
5 ppm	2	10
	2	10
	2	10

Kontrol (MeOH) - 10
 - 10
 - 10

ED₅₀ = 590,9933.

NOTE: $LE_{50} < 30$ sitotoksik
 $30 < LE_{50} < 200$ antimikroba
 $LE_{50} > 200$ diduga bersifat pestisida

Lampiran 4. Bagan Metodologi Penelitian



Lampiran 5. Foto Tanaman Pare Hutan (*Momordica charantia*, Linn)

