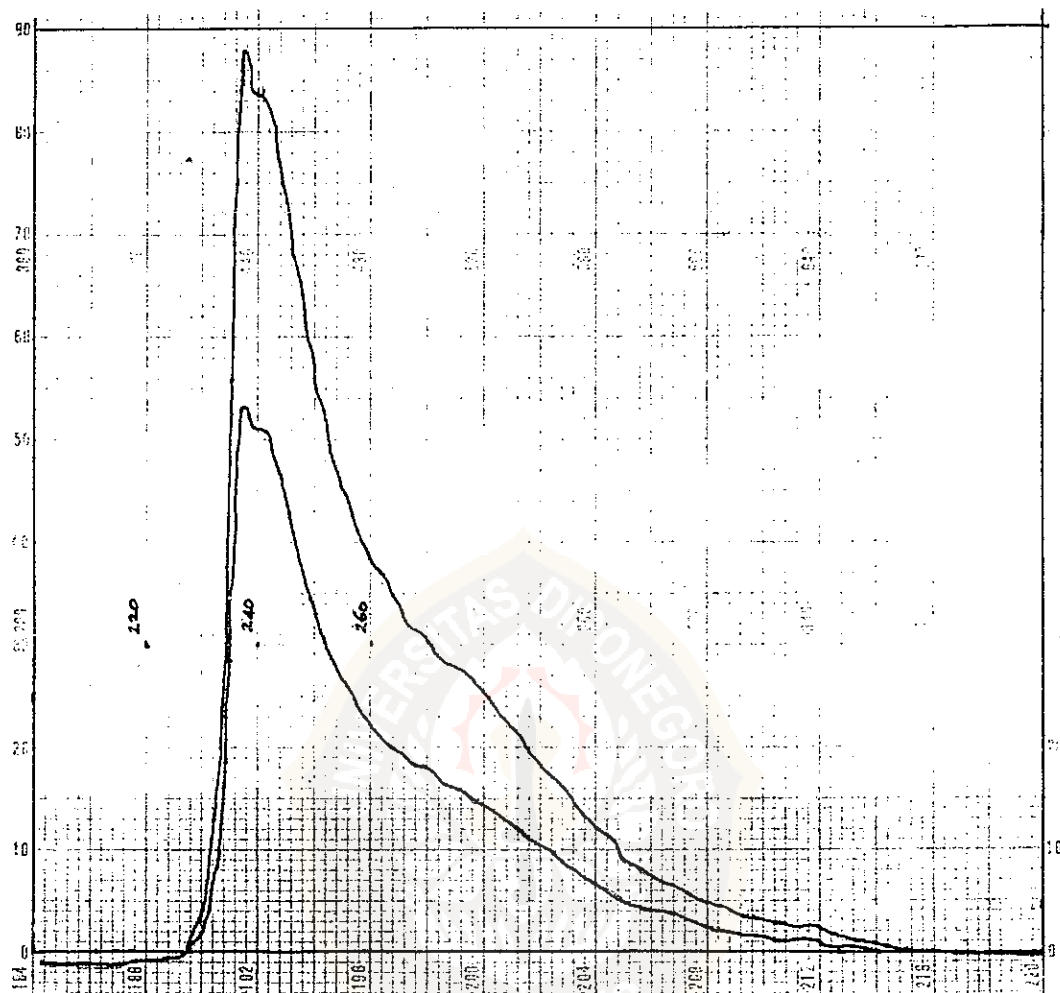
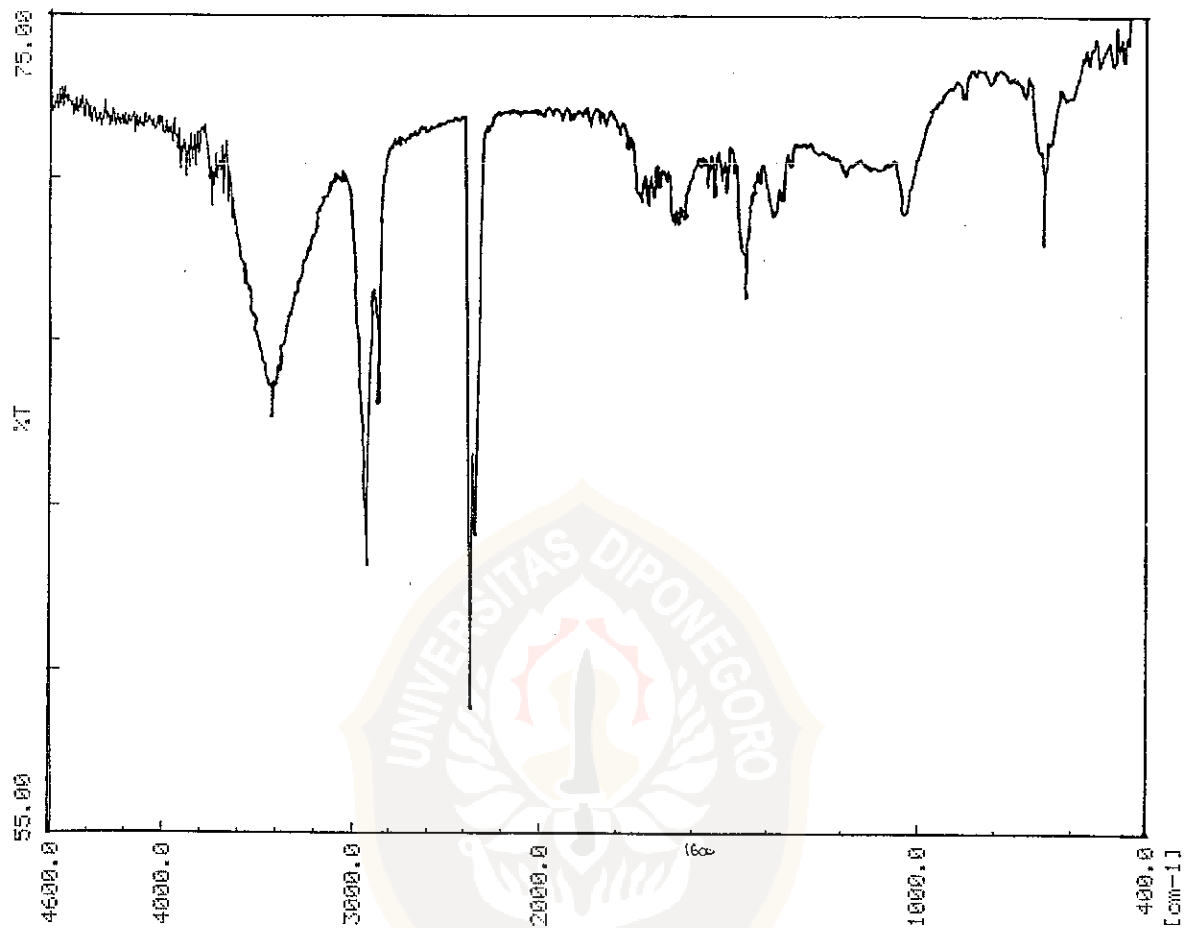


LAMPIRAN A

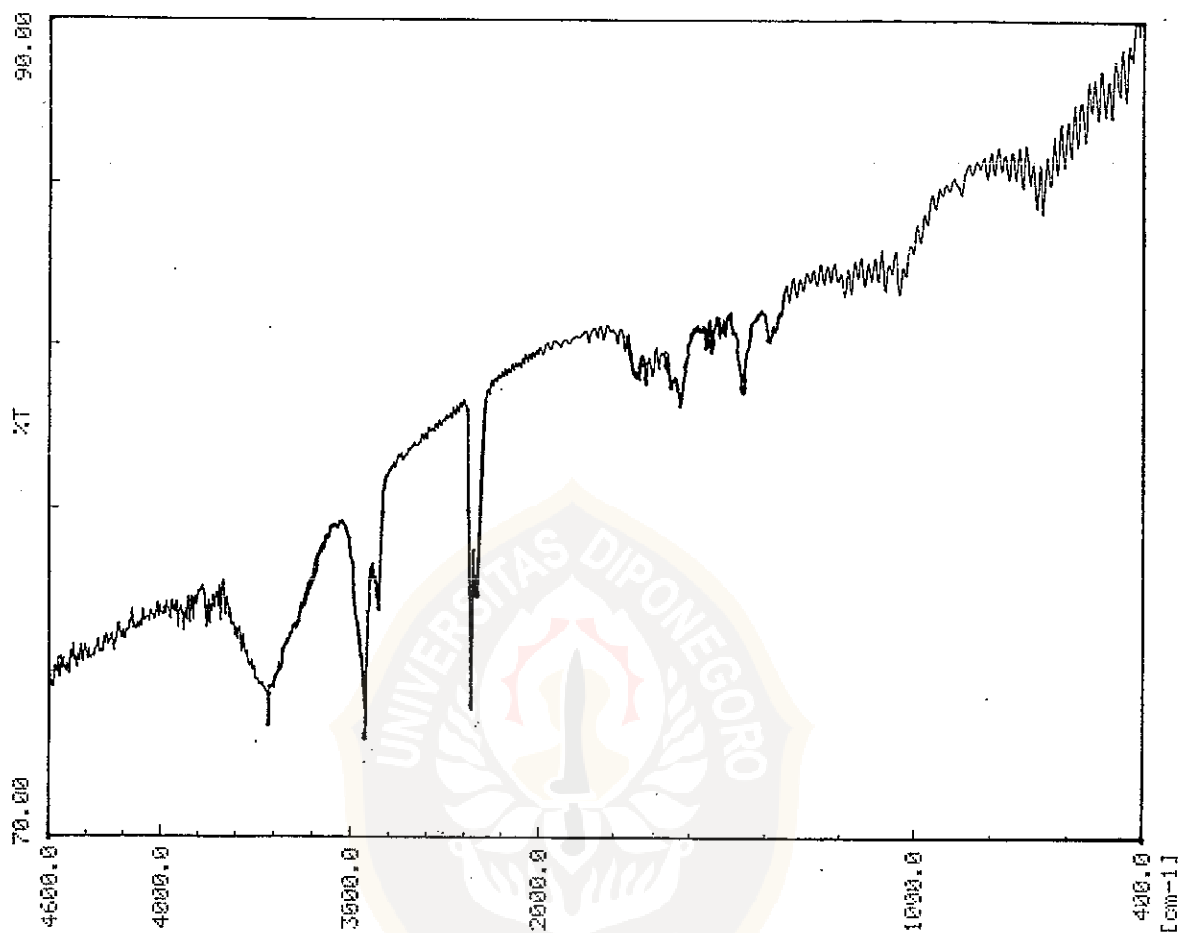


Gambar A. Spektrum UV senyawa II hasil isolasi

LAMPIRAN B



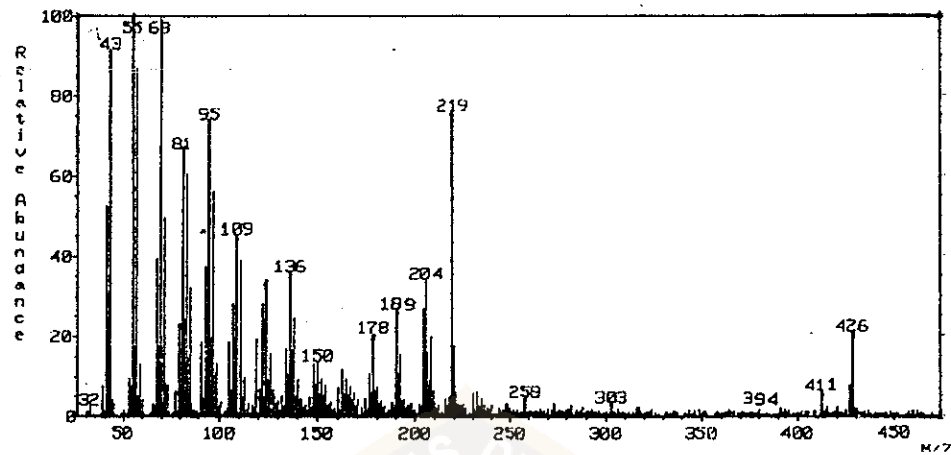
Gambar B. Spektrum IR senyawa I hasil isolasi



Gambar B. Spektrum IR senyawa II hasil isolasi

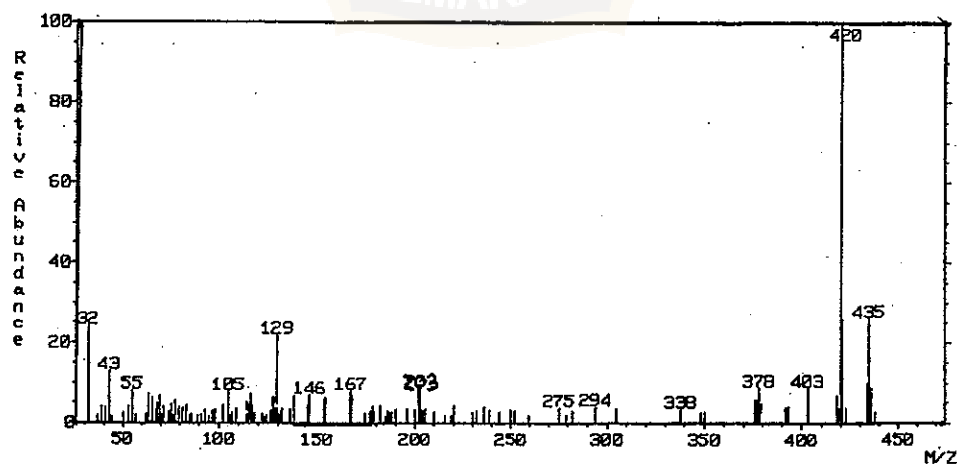
LAMPIRAN C

MASS SPECTRUM Data File: UNDIP3.DAT;7 Z-APR-97 16:49
 Sample: NANI A
 RT: 2.29" EI (Pos.) GC 1.4c BP: m/z 55.0000 Int. 35.9222 Lv 0.00
 Scan# (160)



Gambar C-1. spektrum MS senyawa I hasil isolasi

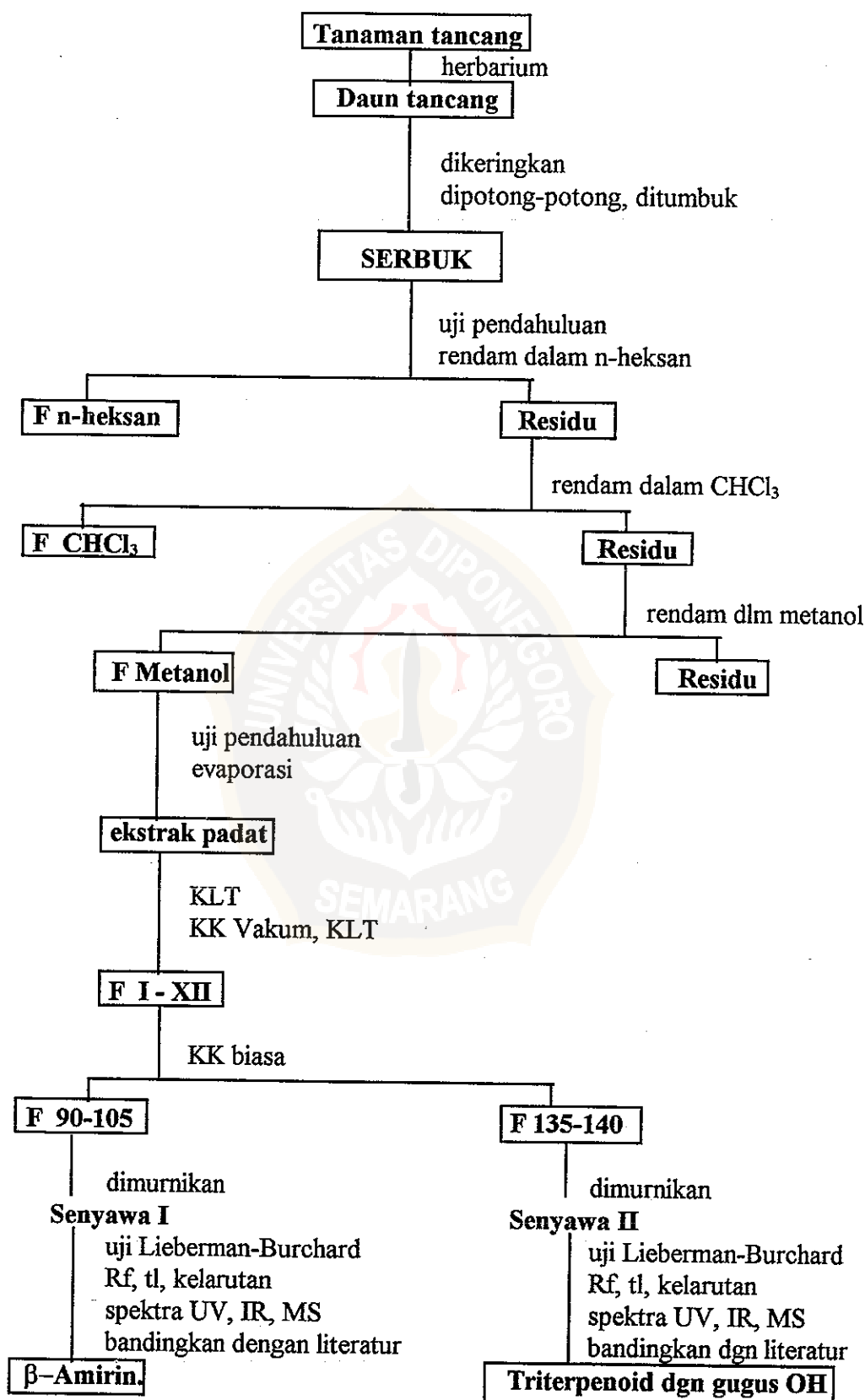
MASS SPECTRUM Data File: UNDIP3.DAT;10 Z-APR-97 17:07
 Sample: NANI B
 RT: 0.31" EI (Pos.) GC 1.4c BP: m/z 420.0000 Int. 6.3293 Lv 0.00
 Scan# (32)



Gambar C-2. Spektrum MS senyawa II hasil isolasi

LAMPIRAN D

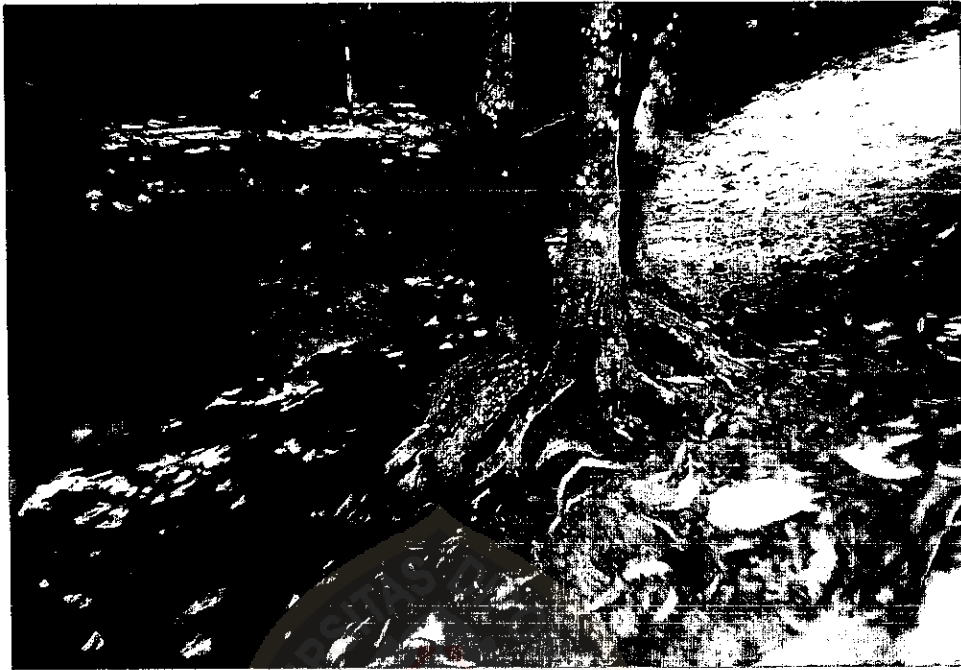
SKEMA KERJA



LAMPIRAN E



Gambar. Daun dan Buah *Bruguiera gymnorrhiza* Lamk



Gambar. Pangkal Batang dan Akar Lutut *Bruguiera gymnorrhiza* Lamk

