

DAFTAR PUSTAKA

1. Adrienne K. Breast Cancer : Increasing Incidence, Limited Option. The Outlook June 2002; 19, 4 (revised).
2. Imaginis. Breast Cancer : Statistics on Incidence, Survival, and Screening. Imaginis corp 2004.
3. Shirley IM. Epidemiologi kanker payudara dan pengendaliannya. Medika 2000;5:326-9.
4. Dep. Kes RI ; Deteksi Kanker Leher Rahim Dan Kanker Payudara 21 April 2008 : 1-3.
5. Sarjadi, Trihartini. Cancer registration in Indonesia. Asian Pasific J Cancer Prev, IACR Supplement, 2001; 2: 21-24.
6. Elemkov IJ, Chrousos GP. Stress hormones, Th1/th2 paterns, Pro/Anti-inflammatory Cytokines and susceptibility to disease. TEM 1999;10(9):359-68.
7. Abbas A, Lichtman AH, Pillai S. Cellular and Molecular Immunology. 6th ed. Philadelphia: Elsevier-Saunders; 2007. p. 3-15, 65-80, 275-289, 314-316, 391-410
8. Karnen GB. Immunologi. 5st ed. Jakarta: Balai Penerbit FKUI; 2002. p. 222-7
9. Burger R, Torres A, Warren R, Caldwell V, Hughes B. Echinacea-induced cytokine production by human macrophages. Int J Immunopharmacol. 1997; 19(7): 371-9.
10. Mishima S, Saito K, Maruyama H, Inoue M, Yamashita T, Ishida T, et al. Antioxidant and immuno-enhancing effects of Echinacea purpurea. Biol Pharm Bull. 2004 jul;27(7):1004-9.
11. See D, Broumand N, Sahl L, Tilles J. Invitro effects of echinacea and ginseng on natural killer and anti body dependent cell cytotoxicity in healthy subjects and chronic fatigue syndrome or acquired immunodeficiency syndrome patient. Immunopharmacol. Jan 1997; 35(3): 229-35
12. Currier NL, Miller SC. Natural Killer cells from aging mice treated with extracts from echinacea purpurea are quantitatively and funtionally rejuvenated. Exp Gerontol 2000 Aug; 35(5):627-39
13. Goel V, Chang C, Slama J, Barton R, Bauer R, Gahler R, et al. Echinacea

stimulates macrophage function in lung and spleen of normal rats. *J Nutr Biochem.* 2002;13 (8): 487

14. Budiono P. Pengaruh Pemberian Echinacea Terhadap sekresi limfosit dan sekresi perforin sel mononuclear pada mencit dengan adenokarsinoma payudara yang diberi stress. Semarang, Undip; 2008: 69
15. History of Cancer, American Cancer Society, http://en.wikipedia.org/wiki/Breast_cancer. diakses tgl 29-1-2009
16. Wunderlich JR, Restifo NP. Essentials Of Immunology. Cancer Principle and Practice Of Oncology , Fifth Edition Vincent T. DeVita Jr, Samuel Hellman, Steven A. Rosenberg, Philadelphia, 1997; 3: ,47-75
17. Sites DP, Terr Abba I, Parslow TP, Medical Immunology, 9th ed, Stamford Connecticut, USA : Appleton and Lange, 1997.
18. Sobin LH, Wittekin CH ed. Classification of Malignant Tumours TNM . International Union Against Cancer UICC; 6th ed A John Wiley and Sons Inc 2002: 131-41
19. Rosai J. Ackerman's surgical Pathology 8th ed Missouri: Mosby-year Book Inc, 1996: 1624-1625
20. Bast CR . Principle of Cancer Biology: Tumor Immunology , in : Devita VT, Rosenberg SA, Hellman W, eds Cancer Principle and Practice of Oncology, Ed V, Philadelphia : Lippincott-Reven, 1997: 267-83
21. Good JW. The immune response In: Stites DP, Terr A I editors. Basic and Clinical Immunologi, 8th ed USA : Prentice –Hall Int; 1998.p.40-9
22. Roitt IM Immunology, 8th ed Barcelona : Times Miror International; 1994.p.21-8
23. Kresno SB, Aspek imunologi pada kanker. Nelwan editor. Simposium ke-4 Jakarta Antimikrobia Update 2003. Jakarta : Sub Bagian Penyakit Tropik dan Infeksi Bagian Ilmu Penyakit Dalam Fakultas Kedokteran Universitas Indonesia RSUPN Dr.Cipto Mangunkusumo: 2003. p. 59-77
24. Lieberman J. The ABCS of granule-mediated cytotoxicity: new weapons in the arsenal. *Nat Rev Immunol* 2003; 5(3): 361-70
25. Whiteside TL, Haberman RB. Characteristics of natural killer cell and lymphokine-activated killer cells In: Oettgen H.F editor. Human cancer immunology. Philadelphia: WB Saunders Company; 1990.p.718-44
26. Constatinides P General Pathobiologi. Connecticut: Appleton and Lange; 1994.p.173-90

27. Sarjadi. Karsinoma epidermoid serviks uteri (Beberapa aspek epidemiologi serta peran histopatologi dan petanda tumor dalam penentuan prognosis). Disertasi. Semarang Universitas Diponegoro;1985. p.8-12
28. Contran RS, Kumar V, Robbins SL, Phatologic Basic of disease. 5th ed Philadelphia: WB Saunders 1994 p.35-9, 72-8
29. Thornthwaite JT, My Discovery of The Natural Killer Cell. Available from: [URL:http://www.cancerfoundation.com/Nkcells.html](http://www.cancerfoundation.com/Nkcells.html).2002 . diakses tgl 29-1-2009
30. Reuter Health Information (2001-01-12).Perforin, interferon-gamma contribute independent antitumor effects. Available from URL: <http://www.hci.utah.edu/content/reuters/2001/01/12/20010112scie001.html> diakses tgl 29-1-2009
31. Egner W. Immunology in: Applied Basic science for Basic Surgical, T Andrew, Churcill livingstone 2000 p.106-115
32. Trapani JA. Granzymes: a family of lymphocyte granule serine protease. GenomeBilogy 2001, 3014.1-7. Available from: [URL:http://www.ajp.amjpathol.org/cgi/content/full/153/4/1041](http://www.ajp.amjpathol.org/cgi/content/full/153/4/1041) diakses tgl 29-1-2009
33. Soini Y, Paakko P, Lehto V. Histopathological Evaluation of apoptosis in cancer. Am J Phatol 1998;153:1041-53. Available from: [URL:http://www.ajp.amjphatol.org/cgi/content/full/153/4/1041](http://www.ajp.amjphatol.org/cgi/content/full/153/4/1041) diakses tgl 29-1-2009
34. Goldhaber-Fiebert S and Kemper K J: Echinacea (E. angustifolia, E. pallida, and E. purpurea), <http://www.mcp.edu/herbal/default.htm>.Diakses tanggal 29-1-2009.
35. Kresno.B.S.Biologi Sel Kanker: Ilmu Dasar Onkologi.Jakarta: Universitas Indonesia;2001.P.9-10
36. Sukarja. Biologi tumor: Onkologi Klinik ed 2 . surabaya : Airlangga University Press;2000. P. 65-83
37. Bauer R, Jurcic K, Puhlmann J, Wagner H. Immunological in vivo and in vitro examinations of echinacea extracts. Arzneimittelforschung 1988;38(2):276-81
38. Schumacher A, Friedberg KD. Analysis of the effect of Echinacea angustifolia on unspecified immunity of the mouse Arzneimittelforschung 1991;41::141-7
39. Giles JT, Palat CT, Chien Susan H, Chang ZG, Kennedy DT. Evaluation of Echinacea for Treatment of common Cold. Pharmacotherapy, 2000;20(6) : 690-7

40. Blumenthal M, Riggins C. Popular herbs in the U.S. market: Therapeutic monographs. Austin, TX: American Botanical Council 1997:1-68
41. Bauer R. Echinacea species as potential immunostimulatory drugs. *Econ Med Plant Res.* 1991;5:253-321
42. Henneicke-von Z, Hentschel C, Schnitker J, Kohlen R, Kohler G, Wustenberg P. Efficacy and safety of a fixed combination phytomedicine in the treatment of the common cold (acute viral respiratory tract infection): results of a randomised, double blind, placebo controlled, multicentre study. *Curr Med Res Opin.* 1999; 15(3): 214-27.
43. Gallo M, Sarkar M, Au W, Pietrzak K, Comas B, Smith M. et al. Pregnancy outcome following gestational exposure to echinacea: a prospective controlled study. *Arch Intern Med.* 2000 Nov 13;160(20):3141-3
44. World Health Organization. Research guidelines for evaluating the safety and efficacy of herbal medicines. Manila 1993: 28
45. Asnar E. Peran perubahan limfosit penghasil sitokin dan peptida motilitas usus terhadap modulasi respon imun mukosal tikus yang stress akibat stressor renjatan listrik. Suatu pendekatan psikoneuroimunologi. (Disertasi). Surabaya Unair. 2001
46. Kato T, Kimura T, Ishii N, Fujii A, Yamamoto K, Kameoka S. et al. The methodology of quantitation of microvessel density and prognostic value of neovascularization associated with long-term survival in Japanese patient with breast cancer. *Breast Cancer Research and Treatment* 53. 1999: 19-31

Lampiran Statistik

Kelompok

Case Processing Summary

Kelompok		Cases					
		Valid		Missing		Total	
		N	Percent	N	Percent	N	Percent
Granzym	K	6	100,0%	0	,0%	6	100,0%
	P1	6	100,0%	0	,0%	6	100,0%
	P2	6	100,0%	0	,0%	6	100,0%
MASS	K	6	100,0%	0	,0%	6	100,0%
	P1	6	100,0%	0	,0%	6	100,0%
	P2	6	100,0%	0	,0%	6	100,0%

Descriptives

Kelompok				Statistic	Std. Error
Granzym	K	Mean		7,000	,2309
		95% Confidence Interval for Mean	Lower Bound	6,406	
			Upper Bound	7,594	
		5% Trimmed Mean		7,022	
		Median		7,100	
		Variance		,320	
		Std. Deviation		,5657	
		Minimum		6,0	
		Maximum		7,6	
		Range		1,6	
		Interquartile Range		,9	
		Skewness		-1,193	,845
		Kurtosis		1,669	1,741
		P1	P1	Mean	
95% Confidence Interval for Mean	Lower Bound			,625	
	Upper Bound			1,375	
5% Trimmed Mean				,989	
Median				,900	
Variance				,128	
Std. Deviation				,3578	
Minimum				,6	
Maximum				1,6	
Range				1,0	
Interquartile Range				,6	
Skewness				,943	,845
Kurtosis				,586	1,741
P2	P2			Mean	

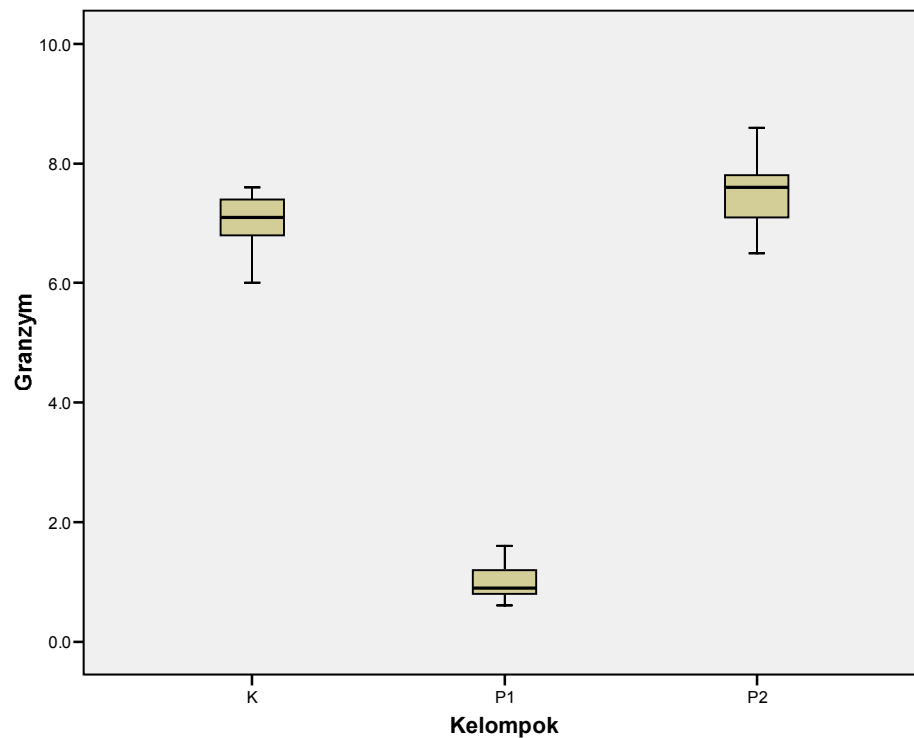
		95% Confidence Interval for Mean	Lower Bound	6,792	
			Upper Bound	8,274	
		5% Trimmed Mean		7,531	
		Median		7,600	
		Variance		,499	
		Std. Deviation		,7062	
		Minimum		6,5	
		Maximum		8,6	
		Range		2,1	
		Interquartile Range		1,1	
		Skewness		,045	,845
		Kurtosis		,719	1,741
MASS	K	Mean		,4833	,06927
		95% Confidence Interval for Mean	Lower Bound	,3053	
			Upper Bound	,6614	
		5% Trimmed Mean		,4854	
		Median		,5000	
		Variance		,029	
		Std. Deviation		,16967	
		Minimum		,24	
		Maximum		,69	
		Range		,45	
		Interquartile Range		,32	
		Skewness		-,316	,845
		Kurtosis		-1,168	1,741
	P1	Mean		1,5500	,11180
		95% Confidence Interval for Mean	Lower Bound	1,2626	
			Upper Bound	1,8374	
		5% Trimmed Mean		1,5500	
		Median		1,5500	
		Variance		,075	
		Std. Deviation		,27386	
		Minimum		1,20	
		Maximum		1,90	
		Range		,70	
		Interquartile Range		,55	
		Skewness		,000	,845
		Kurtosis		-1,541	1,741
	P2	Mean		,3100	,04885
		95% Confidence Interval for Mean	Lower Bound	,1844	
			Upper Bound	,4356	
		5% Trimmed Mean		,3139	
		Median		,3450	

Variance	,014	
Std. Deviation	,11967	
Minimum	,12	
Maximum	,43	
Range	,31	
Interquartile Range	,21	
Skewness	-,838	,845
Kurtosis	-,564	1,741

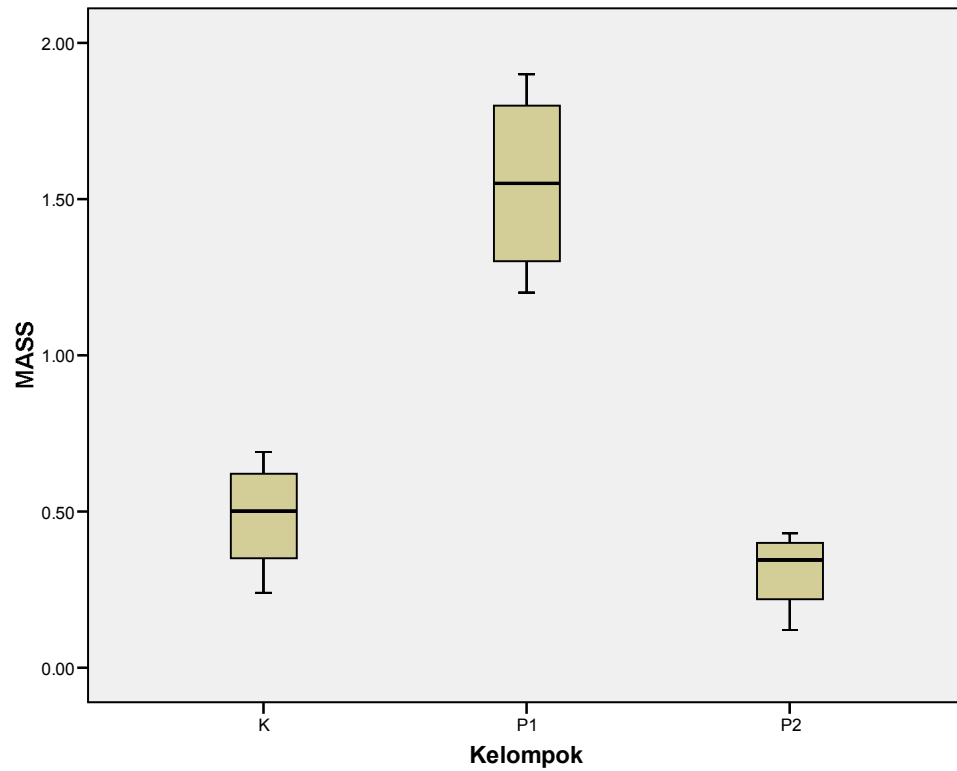
Tests of Normality

Kelompok		Kolmogorov-Smirnov(a)			Shapiro-Wilk		
		Statistic	df	Sig.	Statistic	df	Sig.
Granzym	K	,195	6	,200(*)	,922	6	,523
	P1	,212	6	,200(*)	,933	6	,607
	P2	,186	6	,200(*)	,982	6	,959
MASS	K	,153	6	,200(*)	,972	6	,903
	P1	,153	6	,200(*)	,958	6	,801
	P2	,221	6	,200(*)	,916	6	,474

* This is a lower bound of the true significance.
a. Lilliefors Significance Correction



Granzym



MASS

Oneway

Descriptives

		N	Mean	Std. Deviation	Std. Error	95% Confidence Interval for Mean		Minimum	Maximum
		Lower Bound	Upper Bound	Lower Bound	Upper Bound	Lower Bound	Upper Bound	Lower Bound	Upper Bound
Granzym	K	6	7,000	,5657	,2309	6,406	7,594	6,0	7,6
	P1	6	1,000	,3578	,1461	,625	1,375	,6	1,6
	P2	6	7,533	,7062	,2883	6,792	8,274	6,5	8,6
	Total	18	5,178	3,0934	,7291	3,639	6,716	,6	8,6
MASS	K	6	,4833	,16967	,06927	,3053	,6614	,24	,69
	P1	6	1,5500	,27386	,11180	1,2626	1,8374	1,20	1,90
	P2	6	,3100	,11967	,04885	,1844	,4356	,12	,43
	Total	18	,7811	,59416	,14004	,4856	1,0766	,12	1,90

Test of Homogeneity of Variances

	Levene Statistic	df1	df2	Sig.
Granzym	,668	2	15	,527
MASS	2,438	2	15	,121

ANOVA

		Sum of Squares	df	Mean Square	F	Sig.
Granzym	Between Groups	157,938	2	78,969	250,254	,000
	Within Groups	4,733	15	,316		
	Total	162,671	17			
MASS	Between Groups	5,411	2	2,705	68,720	,000
	Within Groups	,591	15	,039		
	Total	6,001	17			

Post Hoc Tests

Multiple Comparisons

Dependent Variable	(I) Kelompok	(J) Kelompok	Mean Difference (I-J)	Std. Error	Sig.	95% Confidence Interval		
						Upper Bound	Lower Bound	
Granzym	Bonferroni	K	P1	6,0000(*)	,3243	,000	5,126	6,874
			P2	-,5333	,3243	,363	-1,407	,340
		P1	K	-6,0000(*)	,3243	,000	-6,874	-5,126
			P2	-6,5333(*)	,3243	,000	-7,407	-5,660
		P2	K	,5333	,3243	,363	-,340	1,407
			P1	6,5333(*)	,3243	,000	5,660	7,407
	Tamhane	K	P1	6,0000(*)	,2733	,000	5,190	6,810
			P2	-,5333	,3694	,450	-1,600	,533
		P1	K	-6,0000(*)	,2733	,000	-6,810	-5,190
			P2	-6,5333(*)	,3232	,000	-7,524	-5,543
		P2	K	,5333	,3694	,450	-,533	1,600
			P1	6,5333(*)	,3232	,000	5,543	7,524
MASS	Bonferroni	K	P1	-1,06667(*)	,11456	,000	-1,3752	-,7581
			P2	,17333	,11456	,453	-,1352	,4819
		P1	K	1,06667(*)	,11456	,000	,7581	1,3752
			P2	1,24000(*)	,11456	,000	,9314	1,5486
		P2	K	-,17333	,11456	,453	-,4819	,1352
			P1	-1,24000(*)	,11456	,000	-1,5486	-,9314
	Tamhane	K	P1	-1,06667(*)	,13152	,000	-1,4578	-,6756
			P2	,17333	,08476	,199	-,0745	,4212
		P1	K	1,06667(*)	,13152	,000	,6756	1,4578
			P2	1,24000(*)	,12201	,000	,8573	1,6227
		P2	K	-,17333	,08476	,199	-,4212	,0745
			P1	-1,24000(*)	,12201	,000	-1,6227	-,8573

* The mean difference is significant at the .05 level.

Correlations

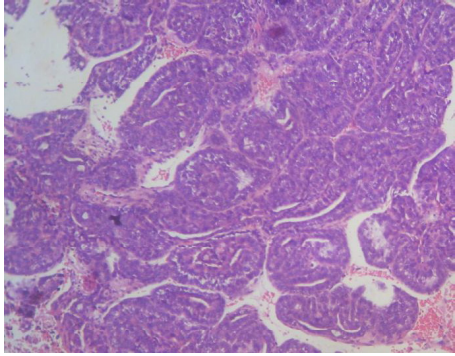
Correlations

		Granzym	MASS
Granzym	Pearson Correlation	1	-.925(**)
	Sig. (2-tailed)		.000
	N	18	18
MASS	Pearson Correlation	-.925(**)	1
	Sig. (2-tailed)	.000	
	N	18	18

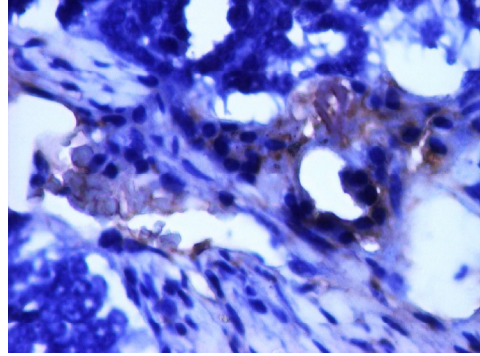
** Correlation is significant at the 0.01 level (2-tailed).

Lampiran Gambar.

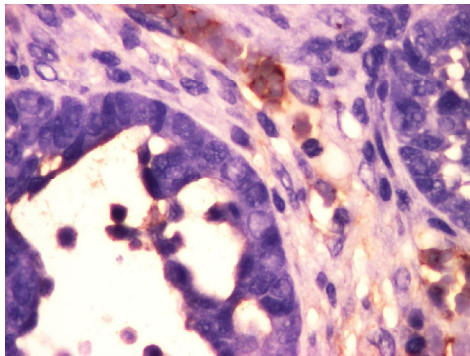
HASIL PEMERIKSAAN MIKROSKOPIK MASSA TUMOR



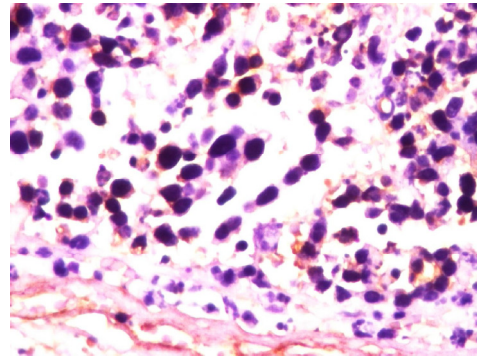
Pewarnaan HE 100x



Ekspresi Granzyme kontrol 400x



Ekspresi Granzyme P1



Ekspresi Granzyme P2

LAMPIRAN GAMBAR MENCIT C3H



Mencit C3H sebelum perlakuan



Mencit C3H kontrol setelah perlakuan



Mencit C3H setelah perlakuan P1



Mencit C3H setelah perlakuan P2